

eDeposit Ireland

Moneybeg and Clareisland Bogs SAC 002340

Item Type	other
Authors	Jeffrey, Rebecca
Citation	Rebecca Jeffrey, 'Moneybeg and Clareisland Bogs SAC 002340', [other], National Parks and Wildlife Service, 2016-02-25, Conservation objectives series (Ireland. National Parks and Wildlife Service), 2016-02-25
Publisher	National Parks and Wildlife Service
Rights	Y
Download date	2026-06-11 19:06:19
Link to Item	https://hdl.handle.net/20.500.14765/76127

National Parks and Wildlife Service

Conservation Objectives Series

Moneybeg and Clareisland Bogs SAC 002340



*An Roinn
Ealaíon, Oidhreachta agus Gaeltachta*

*Department of
Arts, Heritage and the Gaeltacht*



**National Parks and Wildlife Service,
Department of Arts, Heritage and the Gaeltacht,
7 Ely Place, Dublin 2, Ireland.
Web: www.npws.ie
E-mail: nature.conservation@ahg.gov.ie**

Citation:

**NPWS (201) Conservation Objectives: Moneybeg and Clareisland Bogs SAC
002340. Version 1. National Parks and Wildlife Service, Department of Arts,
Heritage and the Gaeltacht.**

**Series Editor: Rebecca Jeffrey
ISSN 2009-4086**

Introduction

The overall aim of the Habitats Directive is to maintain or restore the favourable conservation status of habitats and species of community interest. These habitats and species are listed in the Habitats and Birds Directives and Special Areas of Conservation and Special Protection Areas are designated to afford protection to the most vulnerable of them. These two designations are collectively known as the Natura 2000 network.

European and national legislation places a collective obligation on Ireland and its citizens to maintain habitats and species in the Natura 2000 network at favourable conservation condition. The Government and its agencies are responsible for the implementation and enforcement of regulations that will ensure the ecological integrity of these sites.

A site-specific conservation objective aims to define favourable conservation condition for a particular habitat or species at that site.

The maintenance of habitats and species within Natura 2000 sites at favourable conservation condition will contribute to the overall maintenance of favourable conservation status of those habitats and species at a national level.

Favourable conservation status of a habitat is achieved when:

- its natural range, and area it covers within that range, are stable or increasing, and
- the specific structure and functions which are necessary for its long-term maintenance exist and are likely to continue to exist for the foreseeable future, and
- the conservation status of its typical species is favourable.

The favourable conservation status of a species is achieved when:

- population dynamics data on the species concerned indicate that it is maintaining itself on a long-term basis as a viable component of its natural habitats, and
- the natural range of the species is neither being reduced nor is likely to be reduced for the foreseeable future, and
- there is, and will probably continue to be, a sufficiently large habitat to maintain its populations on a long-term basis.

Notes/Guidelines:

1. The targets given in these conservation objectives are based on best available information at the time of writing. As more information becomes available, targets for attributes may change. These will be updated periodically, as necessary.
2. An appropriate assessment based on these conservation objectives will remain valid even if the targets are subsequently updated, providing they were the most recent objectives available when the assessment was carried out. It is essential that the date and version are included when objectives are cited.
3. Assessments cannot consider an attribute in isolation from the others listed for that habitat or species, or for other habitats and species listed for that site. A plan or project with an apparently small impact on one attribute may have a significant impact on another.
4. Please note that the maps included in this document do not necessarily show the entire extent of the habitats and species for which the site is listed. This should be borne in mind when appropriate assessments are being carried out.
5. When using these objectives, it is essential that the relevant backing/supporting documents are consulted, particularly where instructed in the targets or notes for a particular attribute.

Qualifying Interests

** indicates a priority habitat under the Habitats Directive*

002340	Moneybeg and Clareisland Bogs SAC
7110	Active raised bogsE
7120	Degraded raised bogs still capable of natural regeneration
7150	Depressions on peat substrates of the Rhynchosporion

Please note that this SAC overlaps with Lough Sheelin SPA (004065). See map 2. The conservation objectives for this site should be used in conjunction with those for the overlapping site as appropriate.

Supporting documents, relevant reports & publications

Supporting documents, NPWS reports and publications are available for download from: www.npws.ie/Publications

NPWS Documents

Year :	2014
Title :	National raised bog SAC management plan
Author :	Department of Arts, Heritage and the Gaeltacht
Series :	Draft for consultation. 15 January 2014
<hr/>	
Year :	2015
Title :	Raised bog monitoring and assessment survey 2015- Clareisland Bog- site report
Author :	Crowley, W.; Crushell, P.
Series :	Unpublished report to NPWS
<hr/>	
Year :	2015
Title :	Raised bog monitoring and assessment survey 2015- Moneybeg Bog- site report
Author :	Crowley, W.; Crushell, P.
Series :	Unpublished report to NPWS
<hr/>	
Year :	2016
Title :	Moneybeg and Clareisland Bogs SAC (site code: 2340) Conservation objectives supporting document- raised bog habitats V1
Author :	NPWS
Series :	Conservation objectives supporting document

Other References

Year :	2011
Title :	Review and revision of empirical critical loads and dose-response relationships. Proceedings of an expert workshop, Noordwijkerhout, 23-25 June 2010
Author :	Bobbink, R.; Hettelingh, J.P.
Series :	RIVM report 680359002, Coordination Centre for Effects, National Institute for Public Health and the Environment (RIVM)
<hr/>	
Year :	2014
Title :	Nitrogen deposition and exceedance of critical loads for nutrient nitrogen in Irish grasslands
Author :	Henry, J.; Aherne, J.
Series :	Science of the Total Environment 470–471: 216–223

Spatial data sources

Year :	2014
Title :	Scientific Basis for Raised Bog Conservation in Ireland
GIS Operations :	RBSB13_SACs_ARB_DRB dataset, RBSB13_SACs_2012_HB dataset, RBSB13_SACs_DrainagePatterns_5k dataset and RBSB13_SAC_LIDAR_DTMs dataset clipped to SAC boundary. Expert opinion used as necessary to resolve any issues arising
Used For :	potential 7110; digital elevation model; drainage patterns (maps 3 and 5)
<hr/>	
Year :	2015
Title :	Scientific Basis for Raised Bog Conservation in Ireland
GIS Operations :	Ecotope dataset clipped to SAC boundary. Appropriate ecotopes selected and exported to new dataset. Expert opinion used as necessary to resolve any issues arising
Used For :	7110 ecotopes (map 4)
<hr/>	

Conservation Objectives for : Moneybeg and Clareisland Bogs SAC [002340]

7110 Active raised bogs

To restore the favourable conservation condition of Active raised bogs in Moneybeg and Clareisland Bogs SAC, which is defined by the following list of attributes and targets:

Attribute	Measure	Target	Notes
Habitat area	Hectares	Restore area of active raised bog to 31.7ha, subject to natural processes	Active Raised Bog (ARB) habitat was mapped at 5.3ha by Crowley and Crushell (2015). Area of Degraded Raised Bog (DRB) on the High Bog (HB) has been modelled as 25.5ha. See map 3. However, it is estimated that only 14.8ha is potentially restorable to ARB by drain blocking. The total potential ARB on the HB is therefore estimated to be 20.1ha. Eco-hydrological assessments of the cutover estimates that an additional 11.6ha of bog forming habitats could be restored. The long term target for ARB is therefore 31.7ha. See raised bog supporting document for further details on this and following attributes
Habitat distribution	Occurrence	Restore the distribution and variability of active raised bog across the SAC. See map 4 for distribution in 2015	ARB mainly occurs within a the central parts of both Moneybeg and Clareisland Bogs. DRB also occurs on both bogs, which will require restoration measures. There is also potential for ARB restoration on cutover areas, particularly on Moneybeg Bog (see area target above)
High bog area	Hectares	No decline in extent of high bog necessary to support the development and maintenance of active raised bog. See map 3	The area of high bog within Moneybeg and Clareisland Bogs SAC in 2012 (latest figure available) was 141.5ha (DAHG 2014)
Hydrological regime: water levels	Centimetres	Restore appropriate water levels throughout the site	For ARB, mean water level needs to be near or above the surface of the bog lawns for most of the year. Seasonal fluctuations should not exceed 20cm, and should only be 10cm below the surface, except for very short periods of time
Hydrological regime: flow patterns	Flow direction; slope	Restore, where possible, appropriate high bog topography, flow directions and slopes. See map 5 for current situation	ARB depends on mean water levels being near or above the surface of bog lawns for most of the year. Long and gentle slopes are the most favourable to achieve these conditions. Changes to flow directions due to subsidence of bogs can radically change water regimes and cause drying out of high quality ARB
Transitional areas between high bog and adjacent mineral soils (including cutover areas)	Hectares; distribution	Restore adequate transitional areas to support/protect active raised bog and the services it provides	ARB is threatened due to effects of past drainage and peat-cutting around the margins of Moneybeg and Clareisland Bogs. A near natural transition from the bog to the lake occurs along the northern boundary of Clareisland Bog. Eco-hydrological assessments have evaluated the potential for ARB restoration on cutover areas (see note for habitat area attribute above)
Vegetation quality: central ecotope, active flush, soaks, bog woodland	Hectares	Restore 15.9ha of central ecotope/active flush/soaks/bog woodland as appropriate	At least 50% of ARB habitat should be high quality (i.e. central ecotope, active flush, soaks, bog woodland). Target area of active raised bog for the site has been set at 31.7ha (see area target above)
Vegetation quality: microtopographical features	Hectares	Restore adequate cover of high quality microtopographical features	High quality microtopography (hummocks, hollows and pools) is well developed in small central areas of both Moneybeg and Clareisland Bogs
Vegetation quality: bog moss (<i>Sphagnum</i>) species	Percentage cover	Restore adequate cover of bog moss (<i>Sphagnum</i>) species to ensure peat-forming capacity	<i>Sphagnum</i> cover varies naturally across Ireland with relatively high cover in the east to lower cover in the west. Hummock forming species such as <i>Sphagnum austini</i> are particularly good peat formers. <i>Sphagnum</i> cover and distribution also varies naturally across a site

Typical ARB species: flora	Occurrence	Restore, where appropriate, typical active raised bog flora	Typical flora species include widespread species, as well as those with more restricted distributions but typical of the habitat's subtypes or geographical range
Typical ARB species: fauna	Occurrence	Restore, where appropriate, typical active raised bog fauna	Typical fauna species include widespread species, as well as those with more restricted distributions but typical of the habitat's subtypes or geographical range
Elements of local distinctiveness	Occurrence	Maintain features of local distinctiveness, subject to natural processes	The near natural transition to Lough Sheelin along the northern boundary of Clareisland Bog is of local distinctiveness. A remnant mineral island occurs in the north-western part of Moneybeg Bog
Negative physical indicators	Percentage cover	Negative physical features absent or insignificant	Negative physical indicators include: bare peat, algae dominated pools and hollows, marginal cracks, tear patterns, subsidence features such as dry mineral mounds/ridges emerging or expanding and evidence of burning
Vegetation composition: native negative indicator species	Percentage cover	Native negative indicator species at insignificant levels	Disturbance indicators include species indicative of conditions drying out such as abundant bog asphodel (<i>Narthecium ossifragum</i>), deergrass (<i>Trichophorum germanicum</i>) and harestail cotton-grass (<i>Eriophorum vaginatum</i>) forming tussocks; abundant magellanic bog-moss (<i>Sphagnum magellanicum</i>) in pools previously dominated by <i>Sphagnum</i> species typical of very wet conditions (e.g. feathery bog-moss (<i>S. cuspidatum</i>)); and indicators of frequent burning events such as abundant <i>Cladonia floerkeana</i> and high cover of carnation sedge (<i>Carex panicea</i>) (particularly in true midlands raised bogs). Scot's pine (<i>Pinus scoticus</i>) occurs widely throughout the southern part of Moneybeg Bog
Vegetation composition: non-native invasive species	Percentage cover	Non-native invasive species at insignificant levels and not more than 1% cover	Most common non-native invasive species on raised bogs include lodgepole pine (<i>Pinus contorta</i>), rhododendron (<i>Rhododendron ponticum</i>) and pitcherplant (<i>Sarracenia purpurea</i>). The non-native <i>Campylopus introflexus</i> has been recorded from high bog in this SAC
Air quality: nitrogen deposition	kg N/ha/year	Air quality surrounding bog close to natural reference conditions. The total N deposition should not exceed 5kg N/ha/yr	Change in air quality can result from fertiliser drift; adjacent quarry activities; or other atmospheric inputs. The critical load range for ombrotrophic bogs has been set as between 5 and 10kg N/ha/yr (Bobbink and Hettelingh, 2011). The latest N deposition figures for the area around Moneybeg and Clareisland Bogs suggests that the current level is approximately 19.3kg N/ha/yr (Henry and Aherne, 2014)
Water quality	Hydrochemical measures	Water quality on the high bog and in transitional areas close to natural reference conditions	Water chemistry within raised bogs is influenced by atmospheric inputs (rainwater). Water chemistry in areas surrounding the high bog varies due to influences of different water types (bog water, regional groundwater and run-off from surrounding mineral lands)

Conservation Objectives for : Moneybeg and Clareisland Bogs SAC [002340]

7120 Degraded raised bogs still capable of natural regeneration

The long-term aim for Degraded raised bogs still capable of natural regeneration is that its peat-forming capability is re-established; therefore, the conservation objective for this habitat is inherently linked to that of Active raised bogs (7110) and a separate conservation objective has not been set in Moneybeg and Clareisland Bog SAC

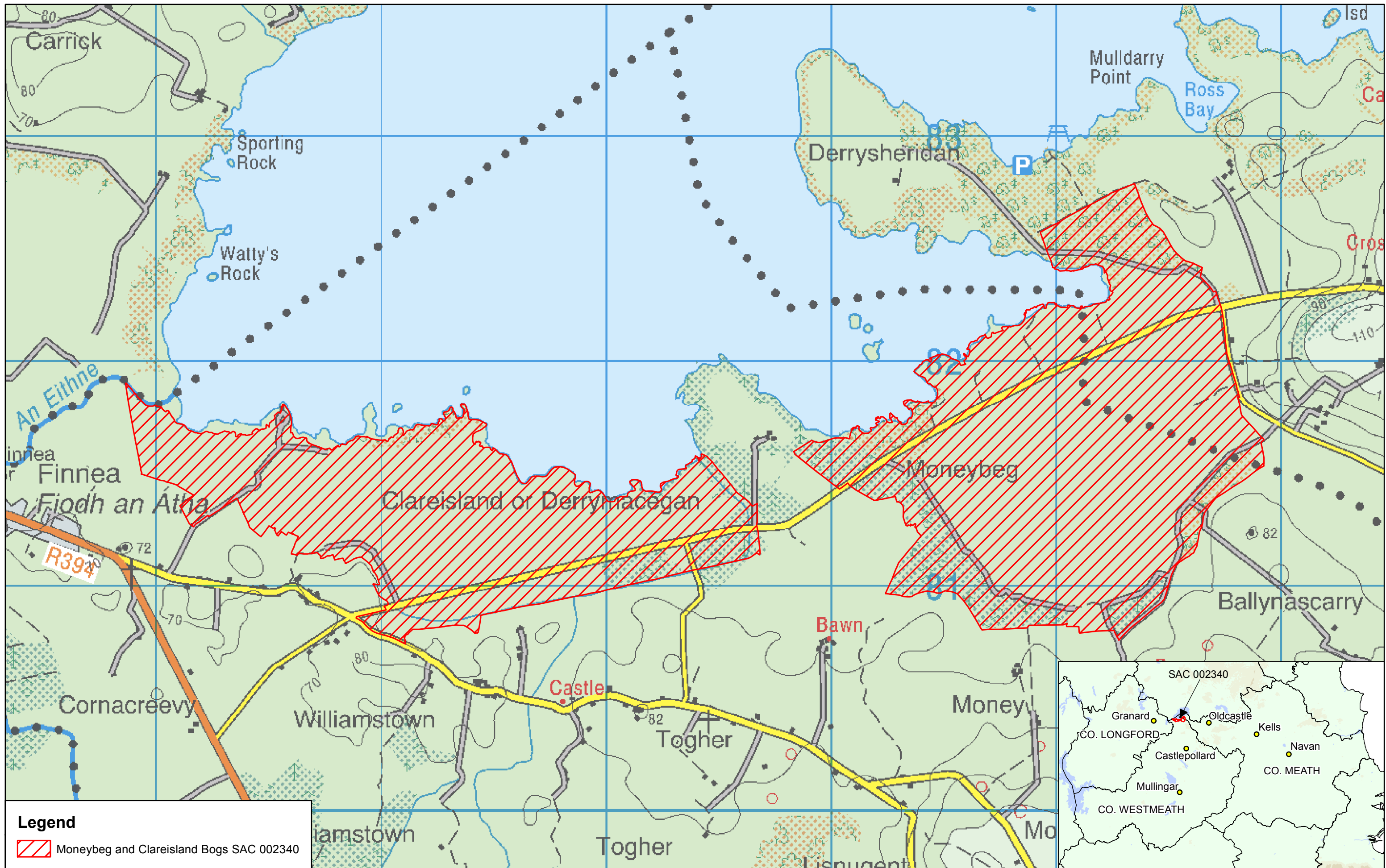
Attribute	Measure	Target	Notes
-----------	---------	--------	-------


Conservation Objectives for : Moneybeg and Clareisland Bogs SAC [002340]

7150 Depressions on peat substrates of the Rhynchosporion

Depressions on peat substrates of the Rhynchosporion is an integral part of good quality Active raised bogs (7110) and thus a separate conservation objective has not been set for the habitat in Moneybeg and Clareisland Bog SAC

Attribute	Measure	Target	Notes
-----------	---------	--------	-------



Legend
 Moneybeg and Clareisland Bogs SAC 002340

An Roinn
 Ealaíon, Oidhreachta agus Gaeltachta
 Department of
 Arts, Heritage and the Gaeltacht

MAP 1:
MONEYBEG AND CLAREISLAND BOGS SAC
CONSERVATION OBJECTIVES
SAC DESIGNATION
 Map to be read in conjunction with the NPWS Conservation Objectives Document.

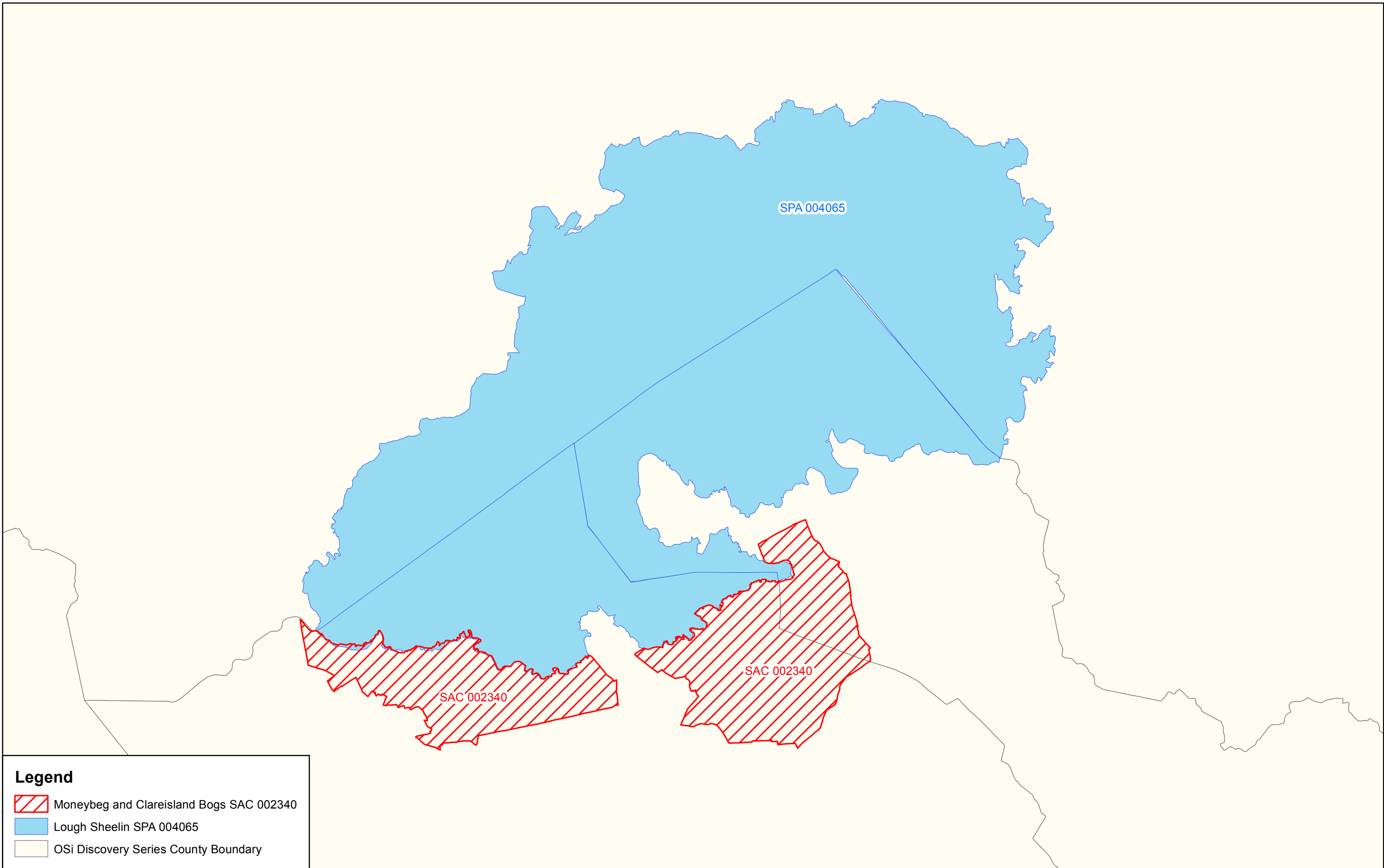
SITE CODE:
SAC 002340; version 3.03. Co. Meath / Westmeath

0 250 500 750 1,000 m

The mapped boundaries are of an indicative and general nature only. Boundaries of designated areas are subject to revision.
 Ordnance Survey of Ireland Licence No EN 0059216. © Ordnance Survey of Ireland Government of Ireland.

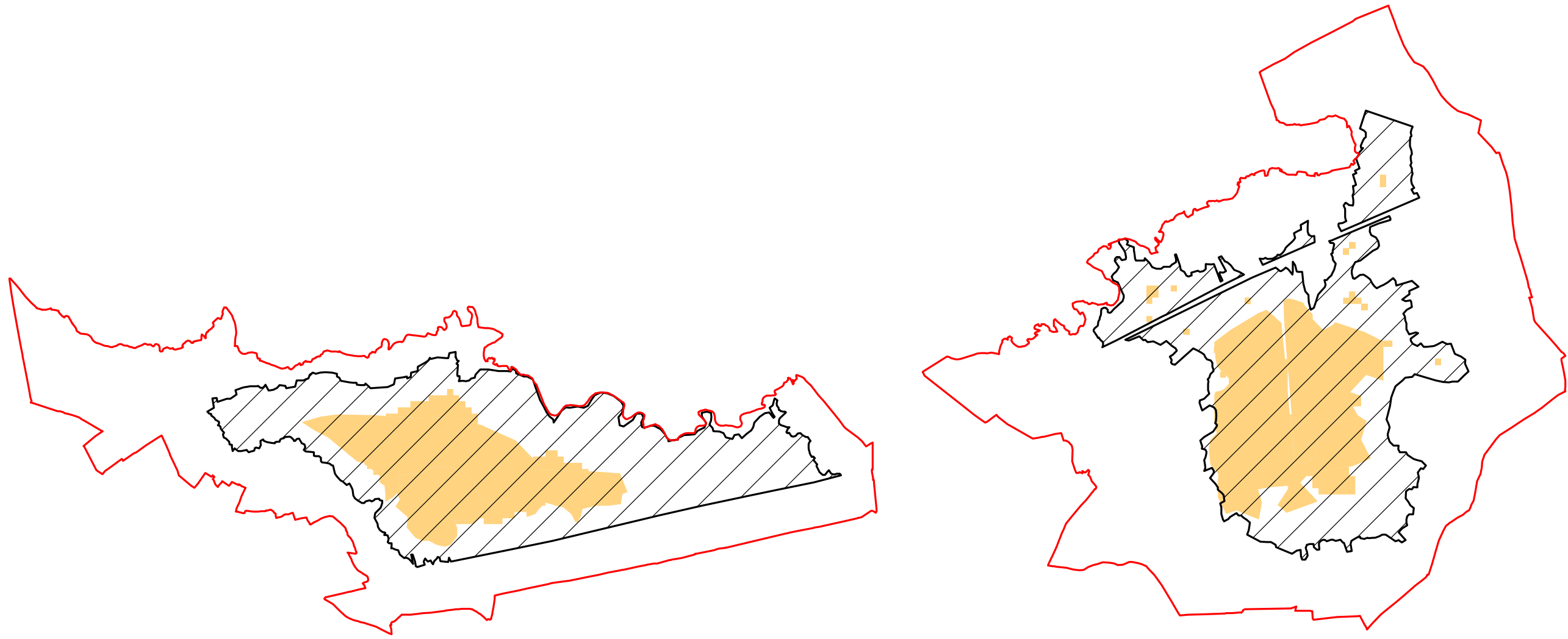
Níl sna teorainneacha ar na léarscáilleana ach nod garshuíomhach ginearálta. Féadfar athbheithníthe a déanamh ar theorainneacha na gceantar comharthaíthe. Suirbhéarachta Ordonáis na hÉireann Ceadúnas Uimh EN 0059216. © Suirbhéarachta Ordonáis na hÉireann Rialtas na hÉireann.

Map Version 1
Date: Feb 2016



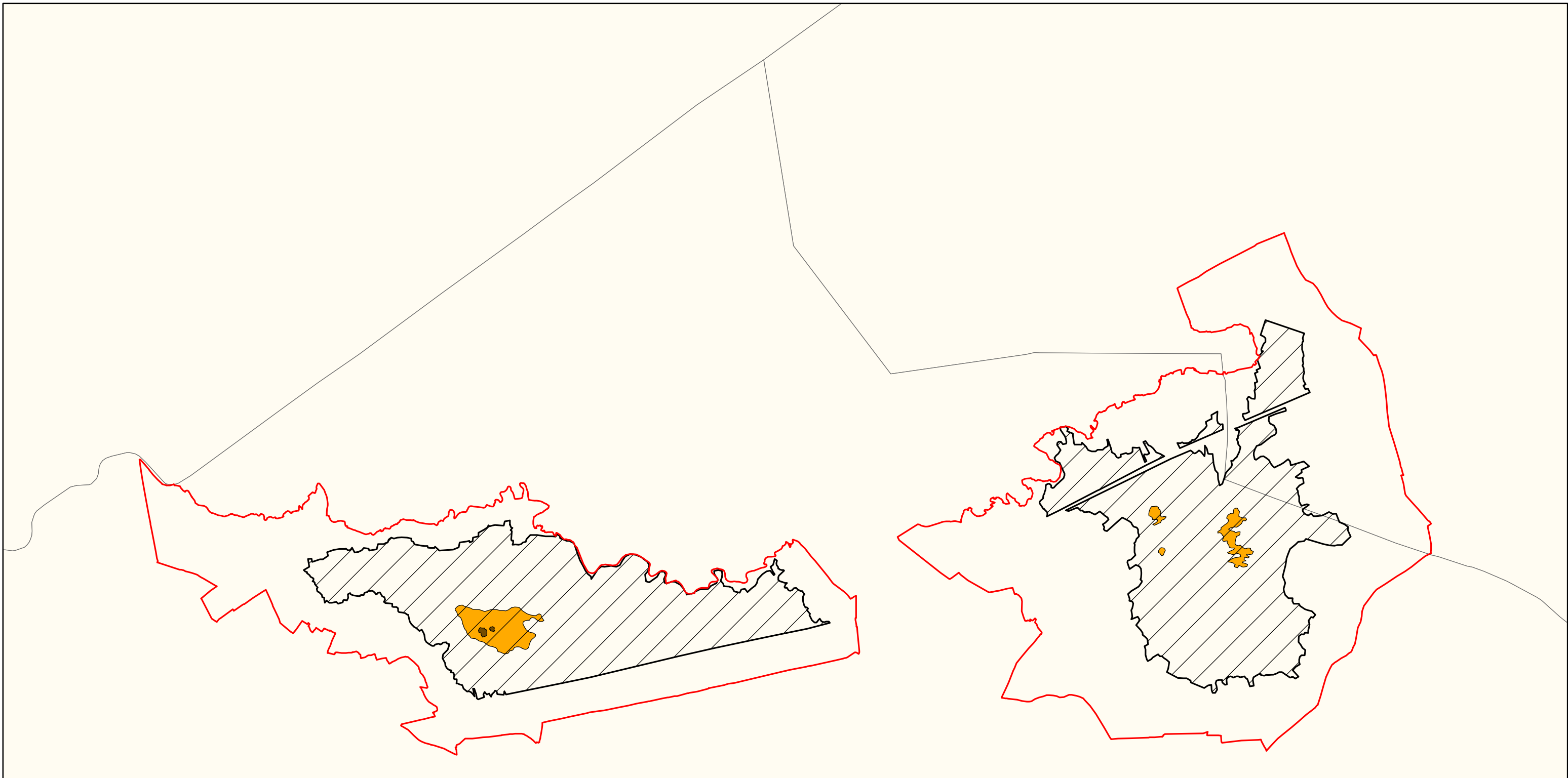
Legend

- Moneybeg and Clareisland Bogs SAC 002340
- Lough Sheelin SPA 004065
- OSi Discovery Series County Boundary






Legend



- Moneybeg and Clareisland Bogs SAC 002340
- High Bog Boundary
- Potential 7110 *Active Raised Bogs

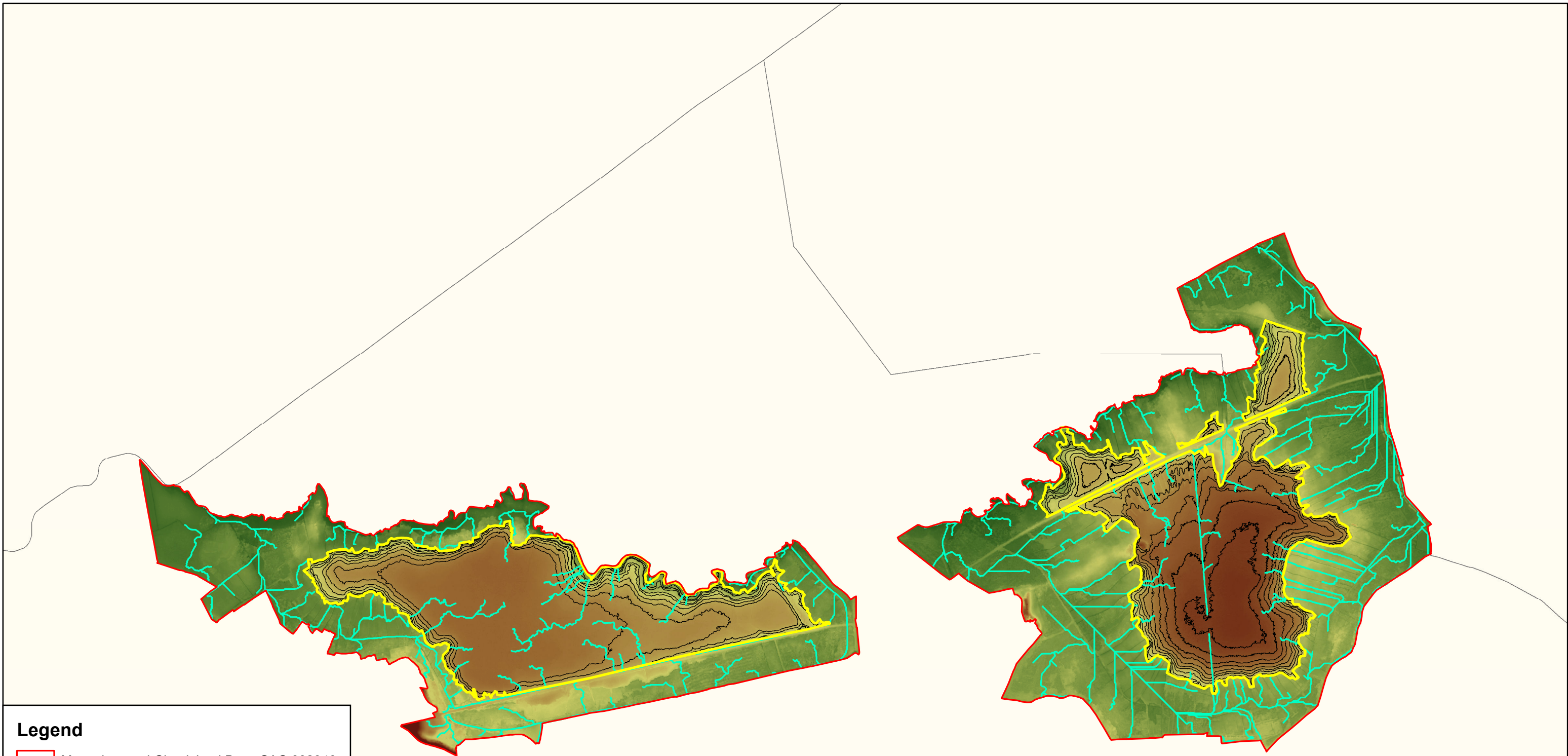


Legend

-  Moneybeg and Clareisland Bogs SAC 002340
-  OSi Discovery Series County Boundary
-  High Bog Boundary

Active Raised Bogs Ecotopes

-  Central ecotope
-  Sub-central ecotope



Legend

- Moneybeg and Clareisland Bogs SAC 002340
- OSi Discovery Series County Boundary
- High Bog Boundary
- Drainage Patterns
- Contours

Elevation

77.52 m

60.95 m