

eDeposit Ireland

Monthly Weather Bulletin August 2001

Item Type	report
Publisher	Met Éireann
Rights	Y
Download date	2026-04-21 07:07:34
Link to Item	https://hdl.handle.net/20.500.14765/70010

Monthly Weather Bulletin

No. 184

AUGUST 2001



INSIDE

Wind & Elements	4
Marine & Pressure	5
Agmet /Lab.....	6
Diary	8
Rainfall	10
Temperature ...	12
Sunshine	14
World Weather..	15
The Weather of Summer	16



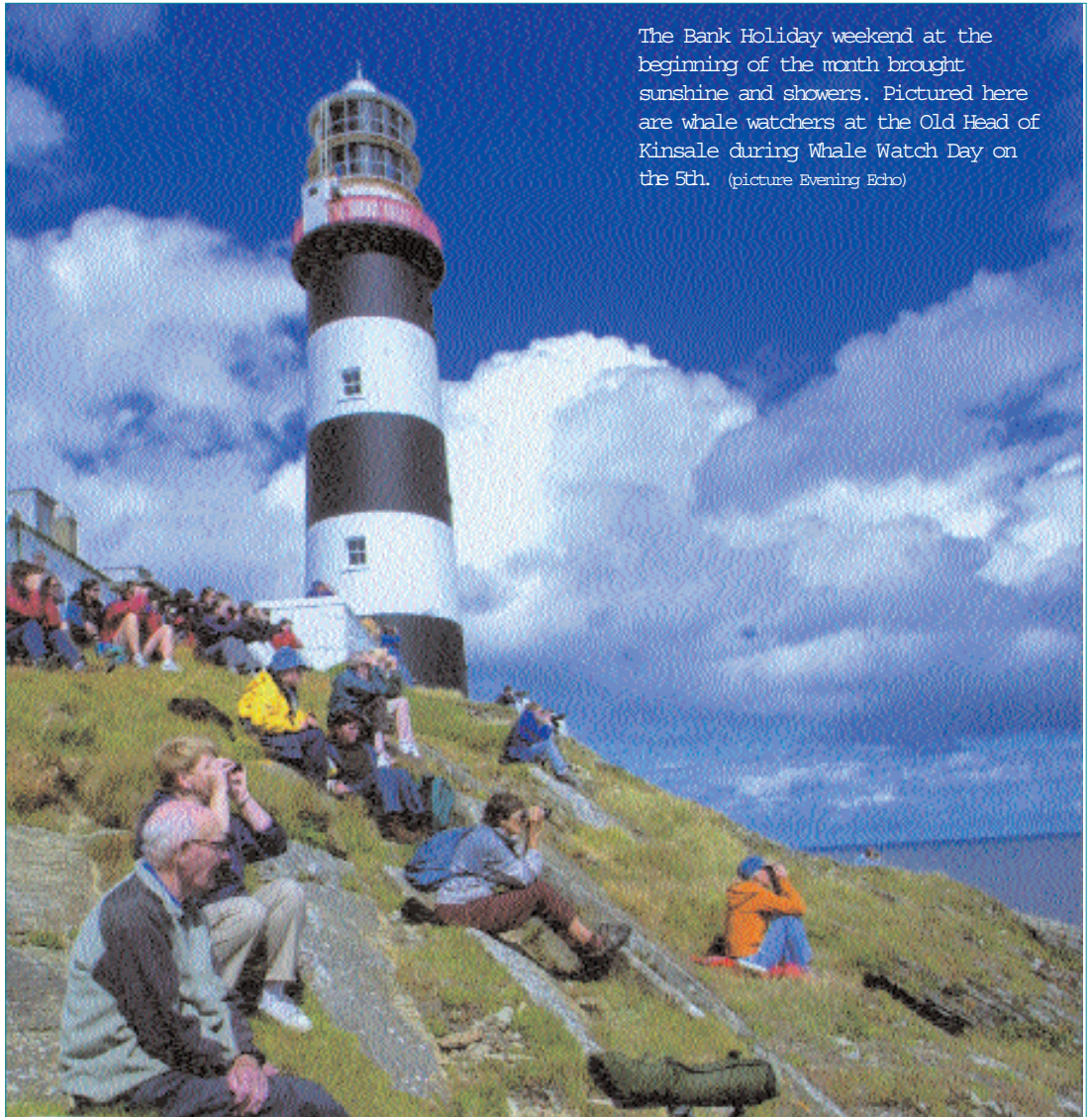
Wet summer in south & southeast

Produced by Met Éireann,
Glasnevin Hill, Dublin 9.
Annual subscription £48



For more information-
tel: +353-1-8064260
fax: +353-1-8064216
climat.enquiries@met.ie
www.met.ie/climate

Notes on the tables and map
showing location of stations
appear in each January issue



The Bank Holiday weekend at the beginning of the month brought sunshine and showers. Pictured here are whale watchers at the Old Head of Kinsale during Whale Watch Day on the 5th. (picture Evening Echo)

WET IN SOUTH AND EAST- WARM AND MOSTLY SUNNY

Summary: It was a wet month over most of the country, but parts of the west and north were drier than normal. This continues the trend in several other months this year of relatively dry weather in the north; Malin Head's monthly total has been below normal for six of the eight months so far. There were some heavy falls on individual days during

the month, particularly in the south on the 14th and 18th, with widespread thunderstorms on a number of days. Despite some relatively cool weather during the first ten days, it was a warm month overall, with mean temperatures around half a degree above normal generally. At most stations the warmest day of the month was on the 1st. Much of the

month was dull, but sunny weather during the final week brought monthly totals above normal in all but southeastern areas. Among synoptic stations, Cork Airport had the unusual distinction of being both the wettest and the sunniest station this month.

1st to 10th: After mainly dry and sunny weather on the 1st, this period saw very disturbed weather with rain or showers each day. Some thundery downpours led to localised flooding in places, especially in the south on the 2nd and in the east on the 8th. A warm southwesterly airflow at first

Cooling off in the Brosna river during some warm and sunny weather on the 26th.
(picture Peter Lennon)



was replaced by cooler west to northwesterly winds after the 3rd as low pressure became centred to the east of Ireland.

11th to 14th: A spell of very mild, humid weather with outbreaks of rain or drizzle each day and very little sunshine; over 50mm of rain fell in the south on the 14th. Minimum temperatures were in the range 14°C to 18°C generally, between five and eight degrees above normal for August.

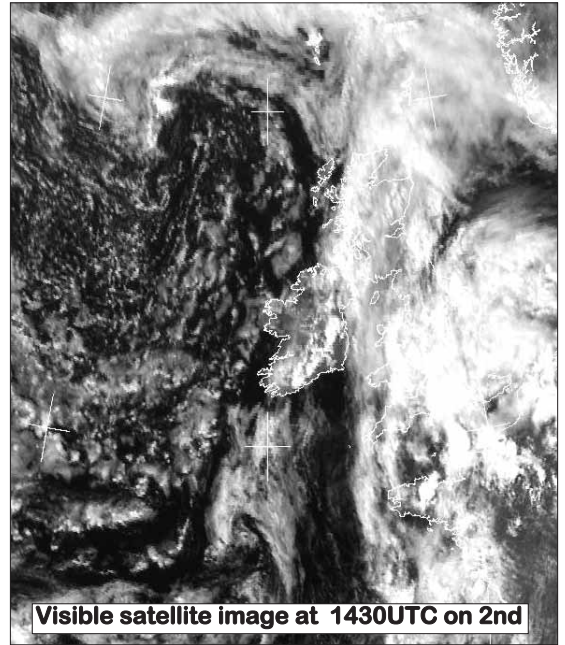
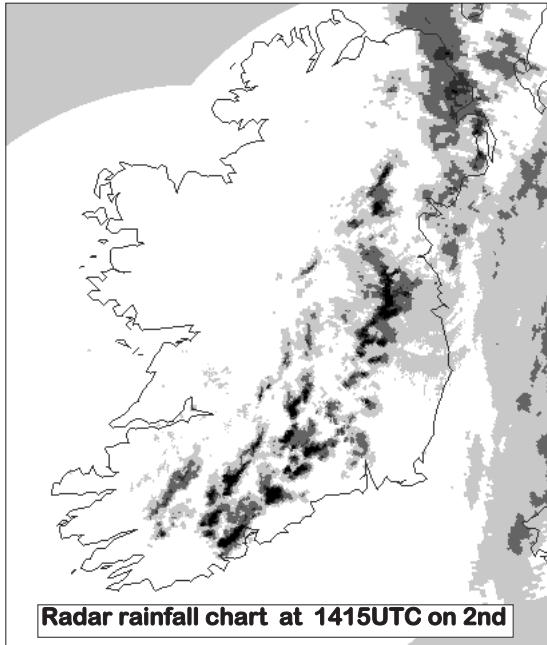
15th to 21st: Generally unsettled with rain or showers each day. Deep depressions passing close to the country on both the 18th and 21st gave spells of heavy rain and some strong winds on the 21st, while showers on other days were heavy and thundery in places, with a tornado reported north of Dublin on the 17th.

22nd to 28th: Mostly dry, warm and increasingly sunny weather as the Azores anticyclone extended its influence northwards over Ireland. Frontal troughs brought some rain in the southeastern half of the country on the 24th and 25th, but rainfall amounts were generally small. Winds were mostly light southwesterly throughout.

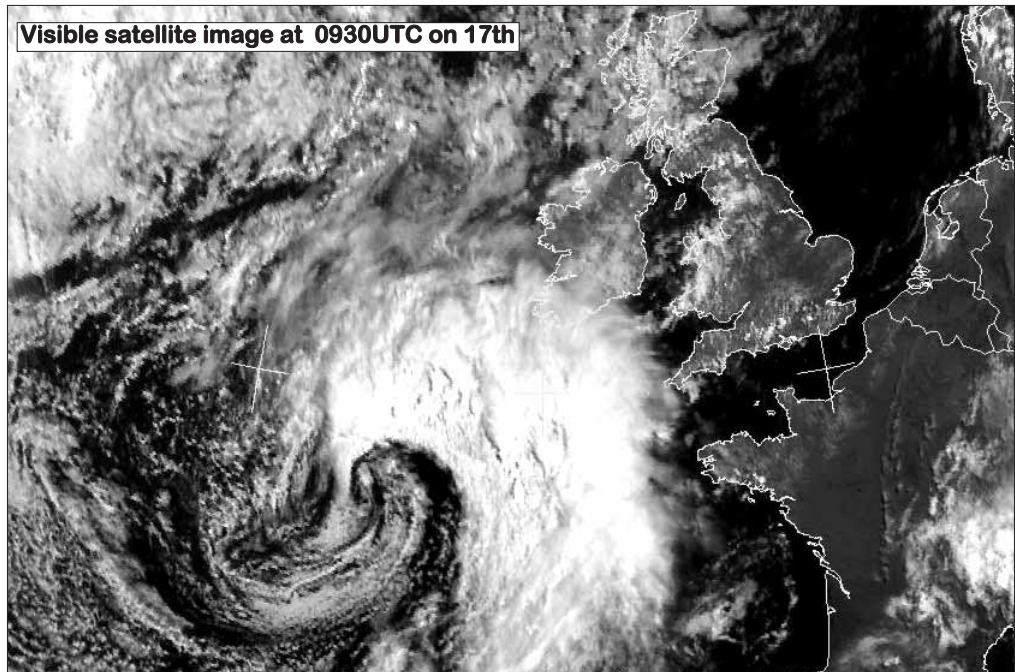
29th to 31st: A cold front moving slowly southeastwards on the 29th brought some heavy rain in the north and northwest and introduced a showery northwesterly flow for the end of the month.

Wind and elements: Mean windspeeds for the month were the lowest for August for between 5 and 25 years at many stations, varying between 5 and 8 knots (*6 and 9m.p.h.*) generally. Very windy conditions affected all areas for a time on the 21st, however; Malin Head recorded the highest gust of the month on this day, 57 knots (*66m.p.h.*), while Belmullet's gust of 56 knots on the same day was its highest August gust since 1965. There were frequent thunderstorms during the first half of the month; these were most widespread on the 2nd, 4th and particularly on the 8th. Fog was widespread in the periods 12th to 19th and 26th to 29th.

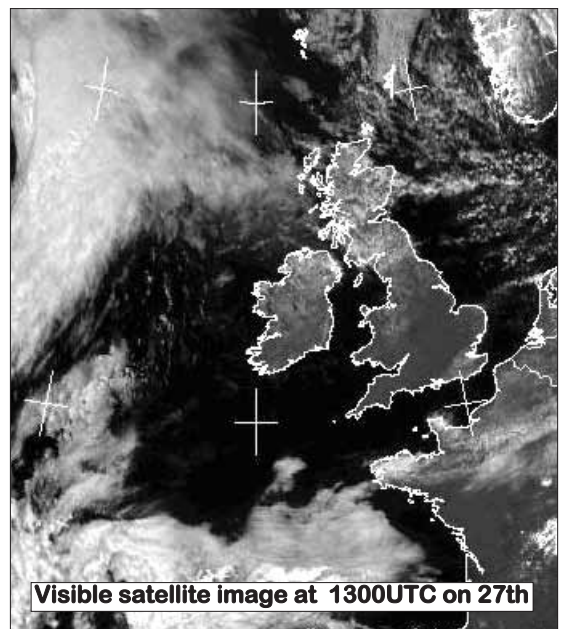
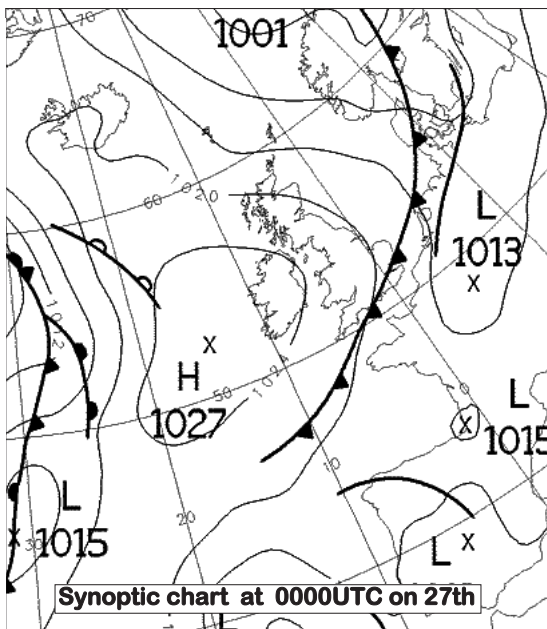
2nd to 10th:
 This period brought some heavy and thundery rain, leading to localised flooding in places. Shown here are the synoptic and radar images for the afternoon of the 2nd; Cork Airport received 22mm in just over 2 hours on this day.



15th - 21st:
 Depressions centred over or near Ireland gave spells of heavy rain and strong winds.



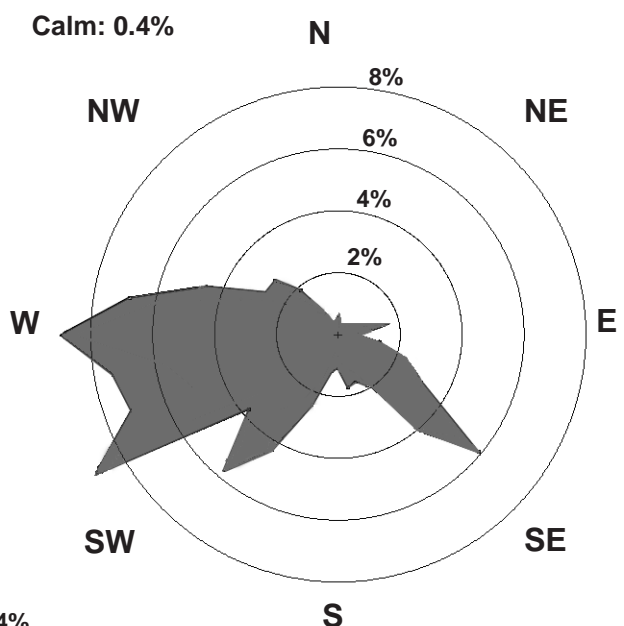
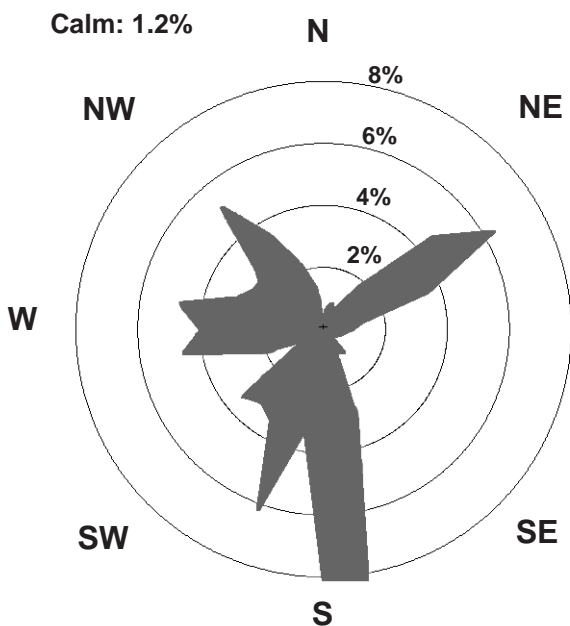
22nd - 28th:
 Generally settled conditions as an anticyclone became centred over Ireland by the 27th.



County / Station	WIND (KNOTS)						ELEMENTS							
	Mean speed	Max. 10-min. mean dir.	Max. 10-min. mean speed	Max. Gust dir.	Max. Gust speed	Max. Gust date/time	Days with gales	Days with gale gusts	Hours with gale gusts	Snow	No. of Days with Snow Lying	Hail	Thunder	Fog
CO. CLARE SHANNON AIRPORT	6.9	170°	29	21/05	170°	41	21/0423	0	1	7	0	0	0	2
CO. CORK CORK AIRPORT	7.8	190°	24	21/11	180°	41	21/0648	0	2	7	0	0	1	12
CO. DONEGAL MALIN HEAD	12.3	170°	41	21/12	170°	57	21/1128	1	4	22	0	0	1	0
CO. DUBLIN CASEMENT AERODROME	7.5	190°	32	21/13	180°	49	21/1020	0	1	10	0	0	3	2
DUBLIN AIRPORT	7.7	170°	26	21/11	180°	39	21/0851	0	2	5	0	0	1	2
CO. KERRY VALENTIA OBSERVATORY	6.6	210°	25	21/11	180°	41	21/0803	0	1	10	0	0	0	6
CO. KILKENNY KILKENNY	5.5	180°	27	21/09	190°	40	21/0734	0	1	7	n/a	0	n/a	n/a
CO. MAYO BELMULLET	9.4	220°	35	21/13	220°	55	21/1236	1	2	20	0	0	0	2
CONNAUGHT AIRPORT	7.8	200°	33	21/13	200°	49	21/1255	0	1	11	0	0	0	16
CO. MONAGHAN CLONES	5.7	160°	25	21/13	170°	40	21/1155	0	1	6	n/a	0	n/a	n/a
CO. OFFALY BIRR	5.4	180°	24	21/08	190°	36	21/0756	0	1	3	n/a	0	n/a	n/a
CO. WESTMEATH MULLINGAR II	5.0	170°	23	21/13	160°	37	21/1152	0	1	3	n/a	0	n/a	n/a
CO. WEXFORD ROSSLARE	8.1	190°	25	21/12	190°	40	21/1340	0	3	17	0	0	1	4

Valentia Observatory

Dublin Airport

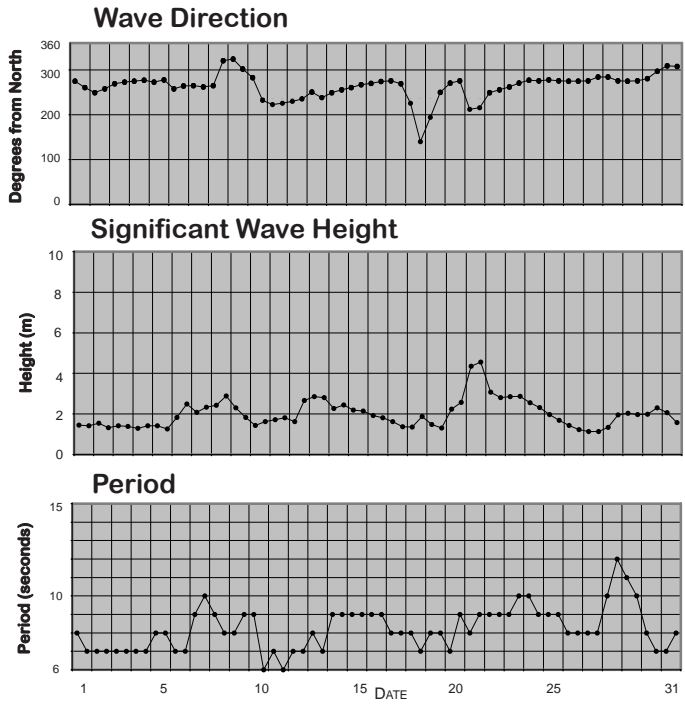


0 1 2 3 4%

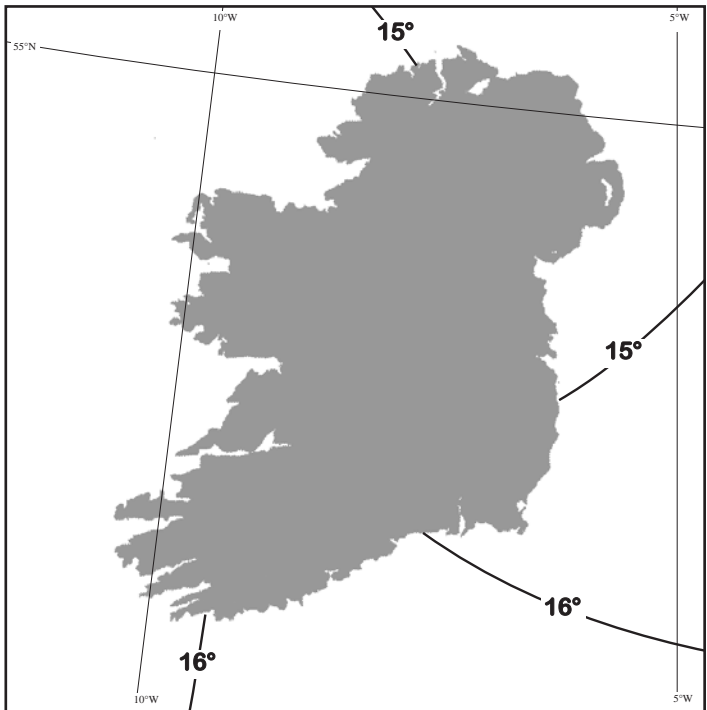
FREQUENCY OF WIND DIRECTION

SEA TEMPERATURES

Sea temperatures rose by between one and two degrees during the month; they were around half a degree higher than normal throughout. There was only a small range in temperature around the coast at mid-month, from around 15°C off the north and northeast coast to just over 16°C in the south. At Malin Head the mean sea temperature for the month was 15.2°C, compared with its August normal of 14.6°C.



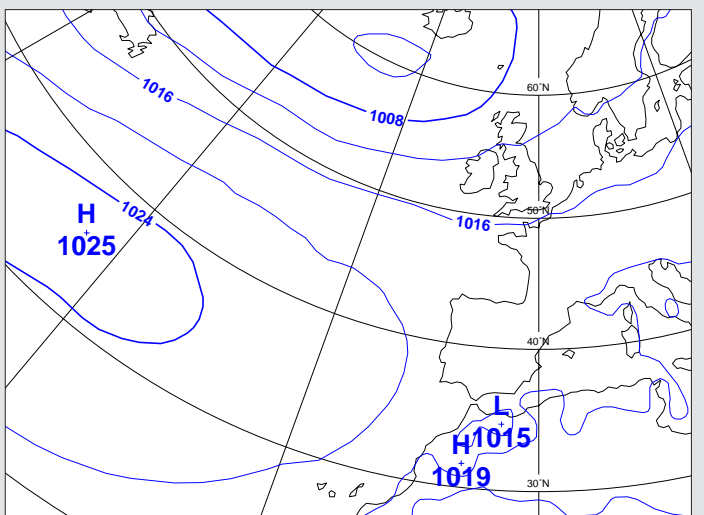
Wave conditions at 52.5°N, 12°W based on WAM model



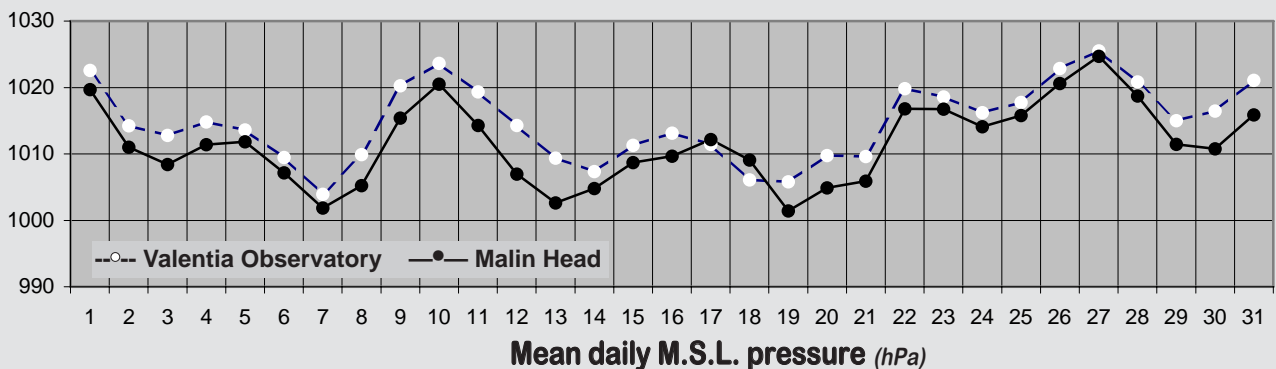
Sea Temperatures (°C) around mid-month

MEAN ATMOSPHERIC PRESSURE

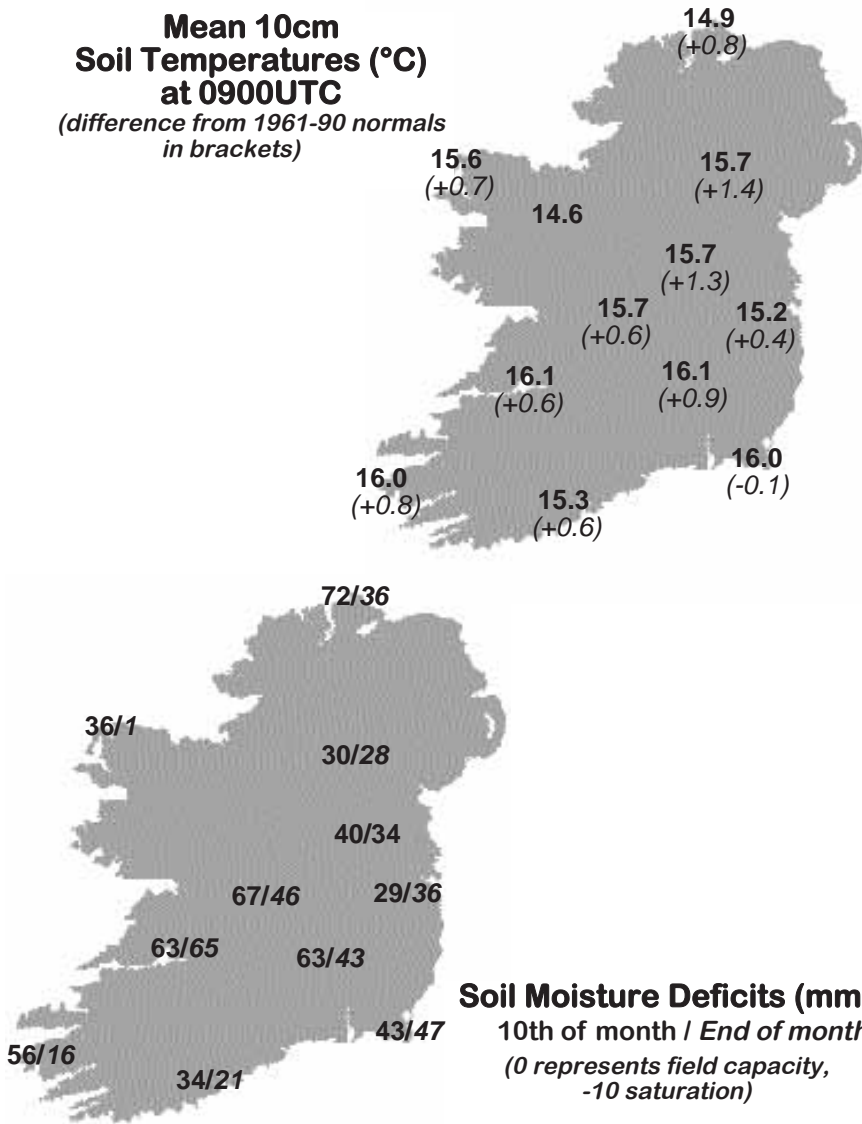
Mean sea level pressure values were close to or a little below normal for the month, ranging from 1012hPa in the north to just over 1014hPa in the south. Typically for August, there was relatively little fluctuation in pressure during the month, with values rarely falling below 1005hPa or exceeding 1025hPa. The highest value, 1028.6hPa, was measured at Valentia Observatory on the first day of the month. Depressions over or near the country brought pressure values below normal at times later in the month; the lowest pressure, 994.5hPa, was recorded at Belmullet on the 21st as a deep depression passed well to the northwest of the country.



The above map is based on monthly means of 1200 UTC



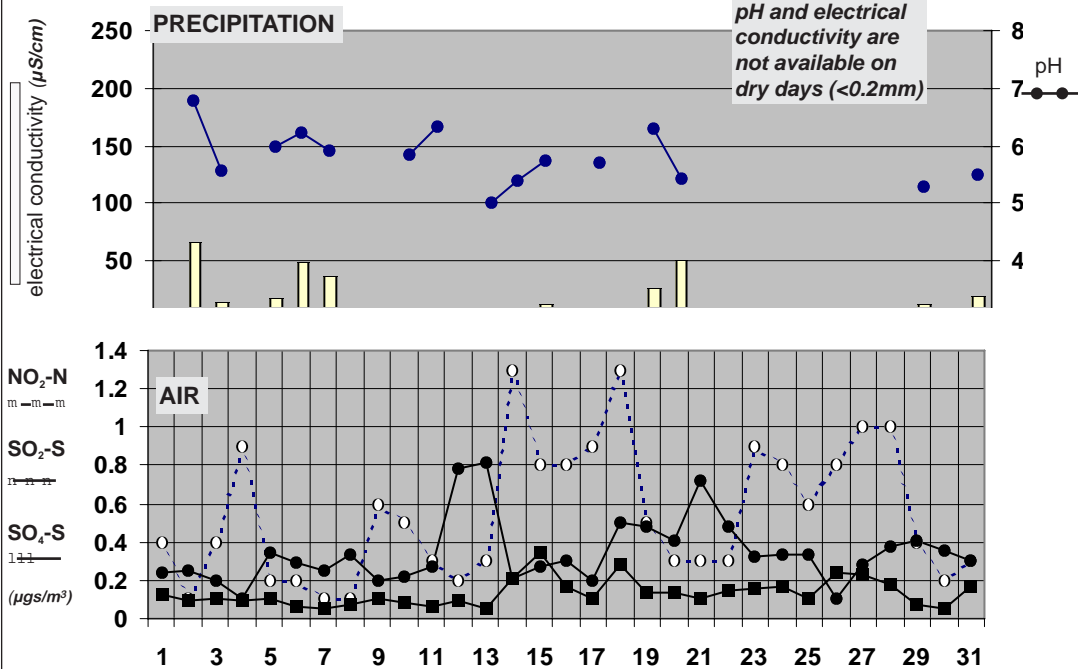
Mean 10cm Soil Temperatures (°C) at 0900UTC
(difference from 1961-90 normals in brackets)



Soil Temperatures at 0900UTC

County/Station	°C		
	10cm	20cm	30cm
CO. CLARE			
SHANNON AIRPORT	16.1	16.7	17.5
CARRON	15.4		16.4
CO. CORK			
FERMOY (MOORE PARK)	16.0	15.8	16.3
CORK AIRPORT	15.3	15.5	17.5
SHERKIN ISLAND	16.6		17.2
BALLINCURRIG (PEAFIELD)	15.1	15.2	15.9
CO. DONEGAL			
MALIN HEAD	14.9	15.3	15.9
CO. DUBLIN			
DUBLIN AIRPORT	14.8	15.2	15.8
CASEMENT AERODROME	15.2	15.7	16.4
CO. KERRY			
VALENTIA OBSERVATORY	16.0	16.3	17.3
CO. KILKENNY			
KILKENNY	16.1	16.9	17.7
CO. LEITRIM			
BALLINAMORE	15.3	15.7	16.3
CO. LIMERICK			
MOUNT RUSSELL	14.6	15.5	
CO. LOUTH			
ARDEE (BOHARNAMOE)	16.5	17.0	17.1
CO. MAYO			
BELMULLET	15.6	16.5	17.6
STRAIDE	15.0		
CONNAUGHT AIRPORT	14.6	13.9	14.7
CO. MEATH			
WARRENSTOWN	15.5	16.0	17.2
CO. MONAGHAN			
CLONES	15.7	15.7	16.4
CO. OFFALY			
BIRR	15.7	16.5	17.7
CO. TIPPERARY			
FETHARD (PARSONSHILL)	15.4	16.3	
CO. WATERFORD			
DUNGARVAN (CARRIGLEA)		16.2	16.9
CO. WESTMEATH			
MULLINGAR II	15.7	16.2	17.6
CO. WEXFORD			
JOHNSTOWN CASTLE	15.8	16.0	16.5
ROSSLARE	16.0	16.3	17.5
CLONROCHE	15.5	16.1	16.8
JOHN F. KENNEDY PARK	15.9	16.2	17.4

Chemical Analysis of Precipitation and Air Samples at Valentia Observatory



Acid rain occurs when pollutants combine with moisture in the air to form sulphuric or nitric acid. pH is the simplest way of measuring the acidity of precipitation. Usually pH of 7.00 is considered neutral but this is not the case in rainfall samples. Pure water in the atmosphere has an equilibrium pH value of 5.65 at 20°C owing to carbon dioxide in the air dissolving to form carbonic acid. Any value below pH 5.65 is considered acid while any value above is considered alkaline.

Sulphur dioxide and sulphate in air contribute to the formation of sulphuric acid; nitrate in air contributes to the formation of nitric acid.

Conductivity measures the total ion activity in the rainfall, i.e. the higher the conductivity the greater the number of ions present.

10-DAY VALUES FOR SELECTED AGROMETEOROLOGICAL STATIONS		RAINFALL				TEMPERATURE										SUNSHINE		P.E. (Penman) (mm)					
Station	period	amount	% of average	rain days	wet days	mean max.	mean min.	mean daily	diff. from average	lowest min.	date	days with air frost	degree days > 4.4°C	degree days > 10.0°C	lowest "grass-min."	date	days with ground frost	mean 10cm at 0900h	mean 30cm at 0900h	total no. of hours	% of average	mean wind speed (m/s) 2magl.	P.E. (Penman) (mm)
Fermoy	11-20	59.3	-	9	7	19.5	12.8	16.2	-	6.5	16	0	117	63	5.4	16	0	16.5	16.3	-	-	2.3	-
	21-end	10.8	-	5	4	19.9	8.6	14.3	-	5.2	28	0	108	52	3.6	29	0	14.9	15.7	-	-	1.3	-
	month	98.4	129	21	17	19.6	10.4	15.0	0.2	4.5	10	0	329	165	2.4	10	0	16.0	16.3	-	-	2.0	-
Co. Donegal	1-10	36.8	-	10	10	17.6	9.4	13.5	-	5.9	10	0	91	38	3.2	10	0	-	-	-	-	-	-
Glenties	11-20	60.6	-	9	8	18.5	11.9	15.2	-	7.9	16	0	108	53	4.4	16	0	-	-	-	-	-	-
	21-end	35.0	-	7	5	18.0	10.5	14.3	-	6.2	26	0	108	49	3.4	28	0	-	-	-	-	-	-
	month	132.4	109	26	23	18.0	10.6	14.3	0.3	5.9	10	0	307	140	3.2	10	0	-	-	-	-	-	-
Co. Kerry	1-10	19.2	-	9	7	19.9	10.9	15.4	-	7.3	10	0	110	55	4.5	10	0	-	-	65.3	-	-	-
Ardfert	11-20	58.9	-	9	8	18.8	12.7	15.8	-	9.4	15	0	114	58	6.2	15	0	-	-	36.1	-	-	-
	21-end	12.2	-	4	3	19.9	9.9	14.9	-	5.2	27	0	116	56	3.6	27	0	-	-	86.9	-	-	-
	month	90.3	-	22	18	19.5	11.2	15.4	0.5	5.2	27	0	339	170	3.6	27	0	-	-	188.3	-	-	-
Co. Leitrim	1-10	38.9	-	10	9	18.4	8.4	13.4	-	5.1	10	0	90	39	3.0	5	0	15.4	16.4	46.3	-	2.4	-
Ballinamore	11-20	56.5	-	10	8	19.1	11.8	15.5	-	8.0	20	0	111	56	6.0	20	0	15.9	16.3	34.6	-	2.2	-
	21-end	10.2	-	5	4	19.2	8.8	14.0	-	4.4	27	0	106	49	2.5	27	0	14.6	16.2	66.6	-	1.9	-
	month	105.6	104	25	21	18.9	9.6	14.3	0.1	4.4	27	0	306	144	2.5	27	0	15.3	16.3	147.5	121	2.2	54
Co. Louth	1-10	48.5	-	10	7	19.8	9.7	14.8	-	6.7	10	0	103	50	3.8	10	0	16.8	17.7	-	-	-	-
Ardee	11-20	30.1	-	9	4	20.4	12.7	16.6	-	7.9	17	0	121	66	4.6	17	0	16.9	17.3	-	-	-	-
	21-end	4.7	-	6	1	20.8	8.7	14.8	-	4.3	27	0	114	58	3.2	28	0	15.8	16.4	-	-	-	-
	month	83.3	113	25	12	20.3	10.3	15.3	0.9	4.3	27	0	339	174	3.2	28	0	16.5	17.1	-	-	-	-
Co. Waterford	1-10	24.4	-	8	7	20.3	10.9	15.6	-	7.8	10	0	112	57	6.5	10	0	-	17.2	62.5	-	1.2	-
Dungarvan	11-20	72.0	-	8	6	19.4	13.5	16.5	-	9.1	20	0	120	65	8.3	16	0	-	17.1	28.2	-	1.9	-
	21-end	12.2	-	5	4	20.0	9.6	14.8	-	5.7	22	0	114	57	5.2	28	0	-	16.4	82.2	-	0.9	-
	month	108.6	-	21	17	19.9	11.3	15.6	0.3	5.7	22	0	347	179	5.2	28	0	-	16.9	172.9	114	1.3	62
Co. Wexford	1-10	53.0	-	7	6	19.5	10.9	15.2	-	8.5	10	0	108	53	2.4	4	0	16.6	17.3	43.7	-	0.6	-
Johnstown Castle	11-20	49.4	-	10	6	18.3	13.6	16.0	-	10.7	20	0	115	59	4.7	16	0	16.3	16.4	25.7	-	1.4	-
	21-end	7.4	-	6	2	18.6	10.9	14.8	-	8.4	29	0	113	53	2.4	22	0	14.7	15.8	72.0	-	0.7	-
	month	109.8	132	23	14	18.8	11.8	15.3	0.5	8.4	29	0	337	165	2.4	4	0	15.8	16.5	141.4	89	0.9	53

MEASURED POTENTIAL EVAPOTRANSPIRATION (P.E.) AND SOIL MOISTURE

SEE BACK PAGE OF JANUARY ISSUE FOR NOTES ON THE DATA

County/Station	Period	P.E. (mm) Amount	Soil Moisture (mm) Deficit	Accumulated Deficit	Surplus
Co. Dublin	1-10	11.5	-	42	49
Kinsealy	11-20	11.3	-	32	10
	21-end	25.9	22	54	-
	month	48.7			
Co. Kerry	1-10	23.4	2	33	-
Valentia Obs.	11-20	16.9	-	0	41
	21-end	27.4	-	0	15
	month	67.7			
Co. Leitrim	1-10	21.6	-	0	17
Ballinamore	11-20	19.2	-	0	37
	21-end	16.5	4	4	-
	month	57.3			
Co. Wexford	1-10	30.0		6	23
Johnstown Castle	11-20	19.2	-	0	30
	21-end	9.4	2	2	-
	month	58.6			

County/Station	GLOBAL SOLAR RADIATION (MJ/sq. m)				P.E. (Penman) total for
	10-day totals 1-10	11-20	21-end	total for month	
Co. Donegal					
Malin Head	168.54	108.12	147.64	424.30	73
Co. Dublin					
Dublin Airport	156.62	93.33	168.50	418.45	71
Co. Kerry					
Valentia Obs.	171.93	93.49	180.42	445.84	67
Co. Kilkenny					
Kilkenny	161.19	91.59	178.91	431.69	67
Co. Mayo					
Belmullet	161.62	114.10	157.50	433.22	67
Co. Monaghan					
Clones	138.46	99.75	164.52	402.73	63
Co. Offaly					
Birr	152.38	99.93	182.99	435.30	65

Wednesday 1st: A weakening ridge extended over Ireland. There were clear spells overnight and during the morning, but cloud increased gradually from the northwest. By noon there were outbreaks of rain in the north, with mist and fog along northwestern coasts; cloud with some light rain spread slowly westwards, but eastern areas remained fine. Winds were light southwesterly.

Rainfall: nil generally, 1mm at Malin Head

Temperature: max. 19°C to 25°C, highest in east and southeast, min. 8°C to 12°C generally, 15°C at Belmullet

Sunshine: 0 to 4 hours generally; 10 or 11 hours in east and southeast

Thursday 2nd: Ireland lay between a slack depression to the northwest and a thundery depression over Brittany, with weak fronts crossing the country from the west and south. Clear spells in the east at first but cloud and rain in the west spread eastwards to reach all but the extreme southeast by late morning. Some of the rain was heavy and thundery, especially in the south and east.

Rainfall: dry in Rosslare, 1 to 5mm in west and north, 15 to 23mm in east and south

Temperature: max. 18°C to 24°C, min. 12°C to 15°C

Sunshine: 1 to 4 hours generally, 8 hours at Belmullet

Friday 3rd: Ireland lay in a showery westerly airflow. Mild overnight with scattered showers and patches of rain or drizzle on eastern coasts. The day was warm and sunny generally with some isolated showers. Westerly winds were light to moderate, strongest on northwestern coasts.

Rainfall: 1 to 4mm generally

Temperature: max. 16°C to 20°C, min. 9°C to 13°C

Sunshine: 4 to 12 hours, highest at Belmullet

Saturday 4th: A showery trough over Ireland. Scattered showers overnight became more frequent during the day; some of these showers were heavy and thundery in the afternoon, especially in the east. Sunny spells between the showers and temperatures around normal for the time of year. Light southerly winds at first veered westerly during the day and freshened.

Rainfall: 1mm or less in south and north, 4 to 12mm generally elsewhere

Temperature: max. 16°C to 21°C, min. 9°C to 12°C

Sunshine: 4 to 12 hours, highest at Belmullet

Sunday 5th: Frontal troughs moved slowly northwards, reaching all but the extreme northeast by late evening. Dry with just the odd shower at first, but rain extended into the southwest late in the morning and pushed northeastwards during the afternoon. Good sunny spells in many areas, especially the east and southeast. Temperatures near normal. Winds were from a south to southwesterly direction, mainly light.

Rainfall: 1 to 6mm, wettest in northwest

Temperature: max. 17°C to 21°C, min. 6°C to 12°C

Sunshine: 4 to 10 hours, highest in east

Monday 6th: A frontal trough lay across the south of the country, moving slowly northeastwards. Patches of mist and fog during the night in inland areas cleared during the morning. Rain and drizzle in all areas during the day, heavy and persistent at times, clearing to showers in most areas by evening. Temperatures a little lower than recent values. Winds mainly from a south to southwesterly direction, light to moderate in strength.

Rainfall: dry in south, 15 to 18mm in parts of midlands and east

Temperature: max. 14°C to 21°C, coolest in north, min. 10°C to 13°C

Sunshine: 0 to 4 hours

Tuesday 7th: A depression off the south coast moved over England as a band of rain moved over the south of Ireland, clearing the southeast coast by late afternoon. This rain was persistent and heavy at times, particularly along the south and southeast coasts. Dull except in the southwest. Winds generally light and variable, becoming northwesterly and moderate at times later.

Rainfall: 0 to 4mm generally but 32mm at Rosslare

Temperature: max. 16°C to 20°C, coolest in north, min. 8°C to 13°C

Sunshine: 0 to 3 hours generally, 7 to 10 hours in south and southwest

Wednesday 8th: Ireland lay in a fresh northwesterly airflow. Scattered showers overnight, some thundery in the northwest. This band of heavy, thundery showers pushed southeastwards in the afternoon, bringing local downpours in parts of the north and east. The northeast and southwest of the country escaped the heaviest showers. Some good sunny spells in most places with temperatures just about normal for the time of year. Southwesterly winds at first gradually veered northwesterly, fresh to strong and gusty at times.

Rainfall: <1mm in south and north, 10 to 21mm in parts of midlands and east

Temperature: max. 14°C to 19°C, coolest in north, min. 9°C to 13°C

Sunshine: 3 to 7 hours

Thursday 9th: A northerly airflow covered Ireland as a weak ridge of high pressure approached from the Atlantic. Rain in some eastern areas at first with scattered showers elsewhere. Sunny spells and scattered showers during the day, a few of which became heavy in the afternoon, but largely dying out in the evening. Northwesterly winds were moderate to fresh and sometimes gusty.

Rainfall: 0 to 4mm

Temperature: max. 15°C to 19°C, min. 8°C to 12°C

Sunshine: 6 to 12 hours, sunniest in western half

Friday 10th: A shallow ridge of high pressure was followed by a frontal trough by afternoon. Mainly dry but cool at first, with patches of light rain or drizzle pushing eastwards during the afternoon; the east remained largely dry until late evening. Some sunny periods, mainly in the eastern half of the country. Temperatures a little below normal. Winds light variable initially but becoming south to southwesterly by evening, still remaining light.

Rainfall: 5 to 8 hours generally, nil at Valentia Observatory

Temperature: max. 16°C to 20°C, min. 5°C to 7°C at inland stations, 8°C to 11°C elsewhere

Sunshine: 3 to 10 hours, sunniest in northwest

Saturday 11th: Low pressure to the north of the country moved eastwards, while its associated fronts crossed the area during the day. A mild, mostly cloudy and humid day with outbreaks of rain or drizzle and patches of mist and fog. Light to moderate south to southwesterly winds.

Rainfall: 1 to 8mm, wettest in southwest

Temperature: max. 18°C to 22°C, min. 15°C to 17°C everywhere

Sunshine: 1 hour or less

Sunday 12th: A mild, humid south to southwesterly airflow covered the area. Dull with fairly widespread outbreaks of rain and drizzle throughout the day and mist turning to fog in places at times. Mild, with any brief sunny spells confined to some southern coastal areas.

Rainfall: 0 to 11mm, driest in south, wettest in northwest

Temperature: max. 16°C to 20°C, 19°C to 24°C otherwise, min. 14°C to 17°C

Sunshine: nil or trace generally, 2 hours in south

Monday 13th: A southwesterly airflow covered the area as a cold front moved southeastwards across the country late in the day. Widespread rain and drizzle, persistent and heavy in the north and northwest. Dull except in the extreme east. Light to moderate winds generally but fresher in the east.

Rainfall: 0 to 3mm generally, 10 to 15mm in parts of northwest and north

Temperature: max. 17°C to 24°C, warmest in east, min. 16°C to 18°C

Sunshine: nil at most stations, 7 hours at Casement Aerodrome

Tuesday 14th: A cold front was slow-moving near the west coast in a mild and humid south to southwesterly flow. Very heavy rain in many southern and western areas but the northwest, east and southeast escaped lightly. Dull except in the extreme east. Winds were mostly light variable but were fresher southerly for a time during the day.

Rainfall: <1mm in east and coastal southeast, 10 to 25mm many areas, 53mm at Cork Airport

Temperature: max. 16°C to 21°C, min. 13°C to 17°C

Sunshine: nil at most stations, 4 hours at Casement Aerodrome

Wednesday 15th: An active cold front over the east of the country moved into the Irish Sea, followed by a weak ridge of high pressure. The eastern half of the country had some heavy rain overnight, lingering in eastern areas until around midday but elsewhere it was dry with sunny spells. Light variable winds at first, freshening and becoming westerly by afternoon.

Rainfall: 0 to 10mm, wettest in Kilkenny

Temperature: max. 18°C to 21°C, min. 10°C to 14°C

Sunshine: <1 hour in east, 5 to 11 hours generally

Thursday 16th: Ireland lay in an unstable westerly airflow as a showery trough crossed the country. Showers in the western half of the country extended eastwards during the day, some heavy and thundery. Western areas turned drier from mid-morning on. Good sunny spells in many areas. Winds were light to moderate, southwest to westerly.

Rainfall: 0 to 12mm, wettest in southwest

Temperature: max. 17°C to 20°C, min. 8°C to 13°C

Sunshine: 3 to 4 hours in east, 7 to 12 hours elsewhere

Friday 17th: A large depression to the southwest moved slowly eastwards, reaching the southwest coast by early afternoon. After a mainly dry start, rain moved steadily northeastwards over the country during the afternoon, heavy in places with thunderstorm and tornado activity in the east. Mainly dry with some sunshine in the north and northwest. Winds light southeasterly.

Rainfall: nil to 7mm

Temperature: max. 16°C to 20°C, min. 7°C to 13°C, mildest in southeast

Sunshine: 0 to 7 hours, sunniest at Connaught Airport

Saturday 18th: A vigorous depression and its associated troughs moved across the southern half of Ireland. Rain over Munster and south Leinster at first extended slowly northwards during the day, reaching the extreme north at the end of the period. Winds were variable initially but became northeasterly during the day, generally light but stronger along the south coast.

Rainfall: 3 to 11mm generally, 25 to 32mm in south and southeast

Temperature: max. 15°C to 19°C, min. 12°C to 14°C

Sunshine: nil generally, 4 hours at Malin Head

Sunday 19th: An area of low pressure to the east of Ireland. Mild and humid overnight with mist and fog patches and spells of rain, heaviest in the west and north. The rain became more patchy during the morning and many areas had a dry afternoon. Becoming sunny, particularly in the south with temperatures normal or above. Cyclonic variable winds at first became moderate to fresh and gusty during the day.

Rainfall: <1mm generally, 5 to 7mm in northwest and north

Temperature: max. 17°C to 21°C, min. 10°C to 13°C

Sunshine: 1 to 8 hours, sunniest in southeast

Monday 20th: A depression over Scotland filled as fronts approached from the Atlantic. A mainly dry, sunny day with well scattered showers. Temperatures were slightly above normal for the time of year. Cloudier weather with patches of mostly light rain moved into the west by evening. Light to moderate southwesterly winds became fresh to strong and gusty during the day.

Rainfall: nil to 3mm

Temperature: max. 17°C to 23°C, min. 9°C to 13°C

Sunshine: 6 to 11 hours

Tuesday 21st: A cold front close to the southwest coast of Ireland moved eastwards across the area during the afternoon and evening. Rain along the west coast became widespread and heavy, particularly near Atlantic coasts. Sunny spells in eastern areas at first and in western areas later after the clearance of the rain. A strong to gale force southerly airflow over the area veered west to southwestwards and moderated.

Rainfall: 3 to 6mm generally, 15 to 33mm in parts of south and west

Temperature: max. 18°C to 21°C, min. 9°C to 14°C, mildest in northwest

Sunshine: 2 to 8 hours, sunniest in southwest

Wednesday 22nd: A south to southwesterly airflow covered the area as an anticyclone intensified to the southeast; a showery trough approached the northwest coast later in the evening. Shallow fog in some inland areas at first. After a dry, bright start to the day, showers developed in the northwest during the afternoon. Sunny everywhere, especially in the east. Winds were mainly light southerly.

Rainfall: <1mm

Temperature: max. 18°C to 21°C, min. 8°C to 13°C

Sunshine: 5 to 12 hours, sunniest in southeast

Thursday 23rd: A stable south to southwest airflow persisted over Ireland, while a slow-moving cold front with waves moved southwestwards over Britain. A mainly dry day everywhere after early showers along the west coast died out. A mixture of cloud and sunny periods, the best of which were in the midlands. Winds were mainly light variable or southerly.

Rainfall: nil or trace

Temperature: max. 16°C to 21°C, min. 9°C to 15°C, mildest in northwest

Sunshine: trace at Rosslare, 3 to 7 hours generally, 10 to 12 hours at midland stations

Friday 24th: A slack airflow, mainly between southerly and westerly in direction, covered the area throughout the day. A weak front lay to the east and south of the country. Mist and some fog in places overnight. Apart from some scattered showers, the north, west and southwest had a dry and warm day with sunny spells. In contrast, the southeast and east were duller with outbreaks of rain, at first in east Munster and south Leinster, spreading to all of Leinster

during the afternoon. The evening was dry almost everywhere.

Rainfall: nil generally, 1 to 5mm in parts of east and south

Temperature: max. 17°C to 20°C, min. 9°C to 13°C

Sunshine: nil at Rosslare, 2 to 7 hours elsewhere

Saturday 25th: Frontal waves brought generally light rain to the midlands and east early in the day, while at the same time a showery trough affected the northwest. Pressure rose over the country during the afternoon, resulting in mostly dry and sunny weather by evening with light northwesterly winds.

Rainfall: <1mm generally, 4mm at Belmullet

Temperature: max. 17°C to 21°C, min. 10°C to 13°C

Sunshine: 3 to 12 hours, highest in southwest

Sunday 26th: A few showers in the extreme north overnight but elsewhere it was dry with fog patches in many places, particularly inland. After the fog had cleared it was a dry, warm and sunny day with just the odd light shower in the north. Temperatures were near or above normal. Winds were generally light but moderate at times on northwestern coasts, mainly northwesterly in direction.

Rainfall: nil or trace

Temperature: max. 17°C to 20°C, min. 5°C to 13°C, coolest inland

Sunshine: 10 to 13 hours everywhere

Monday 27th: An anticyclone of 1027hPa moved eastwards over Ireland. Cool with fog patches inland overnight, but milder near Atlantic coasts with the odd light shower in the extreme north. After fog had cleared it was another dry, warm and sunny day with temperatures around normal. Winds were light northwesterly, occasionally moderate on northern coasts.

Rainfall: nil or trace

Temperature: max. 16°C to 21°C, coolest in north, min. 4°C to 6°C inland, 8°C to 12°C elsewhere

Sunshine: 11 to 13 hours everywhere

Tuesday 28th: An area of high pressure over England and Wales extended a ridge over Ireland. Dry and mostly clear overnight with mist and fog patches, which cleared during the morning. Most of the country had a dry, warm and sunny day but the northwestern quarter was cloudier with some light rain or drizzle in coastal areas during the day. Temperatures near normal for the time of year. Light variable or southwesterly winds, moderate at times on northern and western coasts.

Rainfall: nil or trace

Temperature: max. 17°C to 21°C, min. 5°C to 12°C

Sunshine: 4 to 13 hours, dullest in northwest

Wednesday 29th: Pressure declined slowly during the period as a frontal trough approached from the Atlantic and spread slowly eastwards during the afternoon and evening. Mist and fog in many inland areas early and late. Rain in the north and northwest during the morning extended slowly to all areas, heavy and persistent in places. Temperatures well up to normal and quite warm inland. Dull over northern areas but sunny spells in the southeast and south. Winds initially light variable, becoming southwesterly later, remaining mostly light. Temperatures were normal or above, warmest inland.

Rainfall: <2mm generally, 12 to 22mm in northwest and north

Temperature: max. 14°C to 23°C, warmest in southeast, min. 7°C to 14°C

Sunshine: nil to 9 hours, sunniest in southeast

Thursday 30th: Frontal troughs cleared the country early overnight, giving way to a fresh west to northwesterly airflow. Some mist or fog during the night and early morning in inland areas. Cool and showery in many areas during the day, with most showers in western areas. Long clear or sunny spells also. Temperatures near or below normal. North to northwesterly winds, generally light but occasionally moderate.

Rainfall: nil to 3mm

Temperature: max. 15°C to 20°C, min. 10°C to 13°C

Sunshine: 5 to 10 hours, sunniest in south

Friday 31st: A weak ridge over Ireland moved eastwards during the day. Some showers in northern areas overnight, but generally dry and mild. A dry, sunny and fairly cool day almost everywhere with a light to moderate southwesterly airflow. Mainly dull near Atlantic coasts, where there were outbreaks of patchy light rain by evening.

Rainfall: nil to 2mm

Temperature: max. 14°C to 19°C, min. 10°C to 14°C

Sunshine: trace to 10 hours, sunniest in south

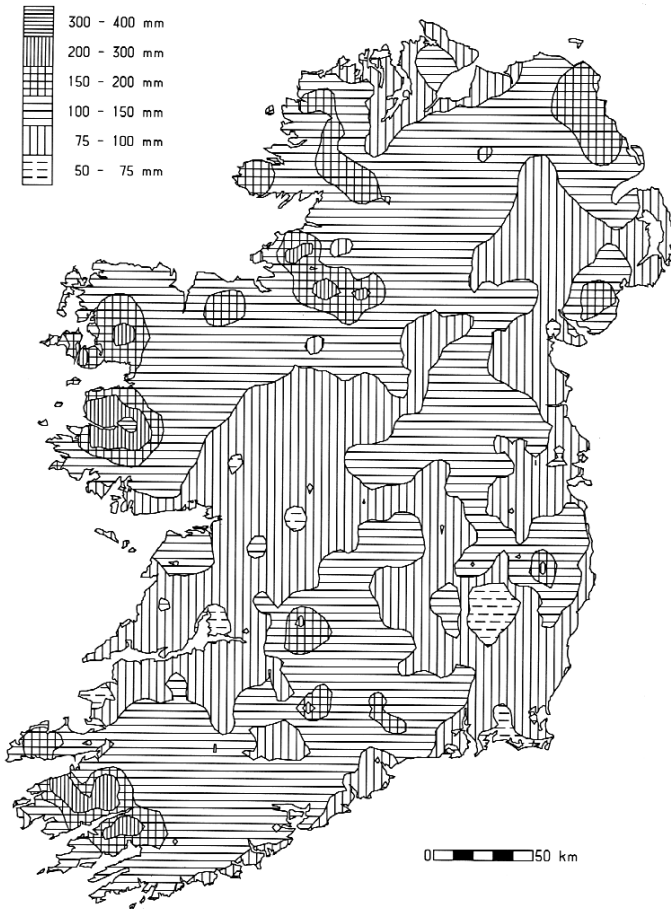
Wetter than normal almost everywhere

Similar to the other summer months this year, rainfall amounts were very variable across the country during August, with some heavy falls on individual days affecting southern and eastern areas in particular. While Shannon Airport received around three quarters of its normal August rainfall, over twice the normal total was recorded in the Clonmel area. Totals ranged from 63mm at Shannon Airport to 214mm at Maam Valley, Co. Galway. It was the driest August for 6 years at Shannon but the wettest for 9 years at Mullingar.

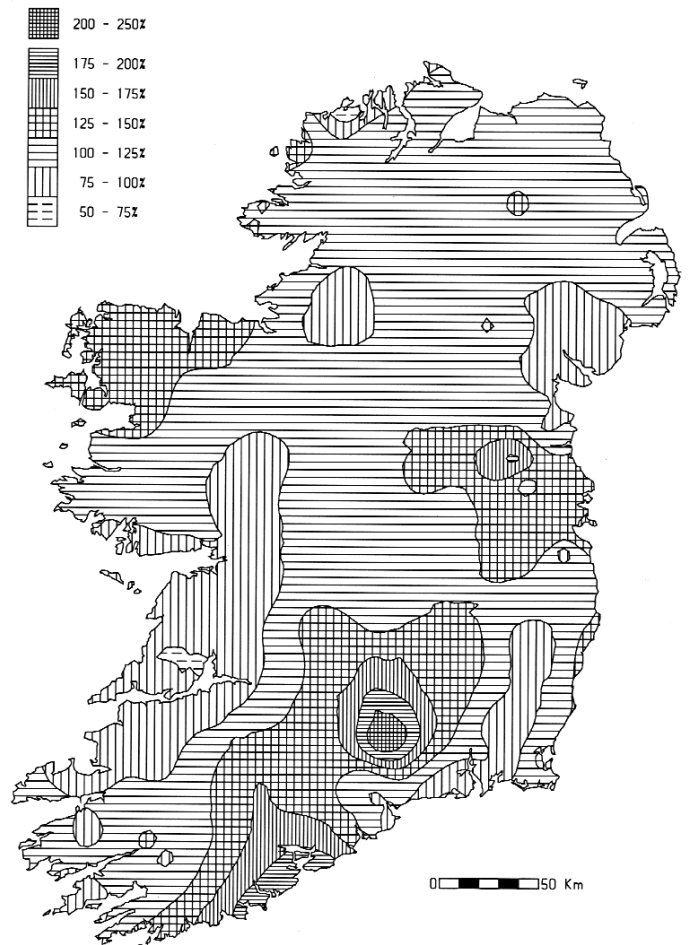
Apart from the period between the 22nd and 28th, rain was recorded on most days of the month. The number of wetdays (*days with 1.0mm or more of rainfall*) was well above normal for August; there were between 14 and 18 such days during the month at most stations compared with the normal range of 10 to 14, with over 20 wetdays recorded in parts of the south, west and northwest. Among the days with heavy falls were the 2nd, the period 6th to 8th, the 14th and 18th, with localised thundery downpours on other days also. Ballincurrig (Peafield), Co. Cork, measured the highest daily fall of the month, 54.4mm on the 14th.

<i>County/ Station</i>	Total Amount (mm)	% of 1961-90 average	Most in a day / date		Number of Raindays ($>0.2\text{mm}$)	Wetdays ($\geq 1\text{mm}$)
CO. CLARE						
SHANNON AIRPORT	62.5	76	9.0	13	19	14
CARRON	127.9	92	16.2	12	21	19
CO. CORK						
FERMOY (MOORE PARK)	98.4	129	36.8	14	21	17
CORK AIRPORT	154.6	172	49.8	14	23	15
SHERKIN ISLAND	112.4	126	28.2	17	18	14
BALLINCURRIG (PEAFIELD)	127.4		54.4	14	19	13
CO. DONEGAL						
MALIN HEAD	89.5	97	18.0	13	21	17
BALLYSHANNON (CATHLEEN'S FALL)	113.8	115	17.3	13	23	20
GLENTIES	132.4	109	21.3	13	26	23
CO. DUBLIN						
DUBLIN (PHOENIX PARK)	101.3	139	26.1	8	20	15
DUBLIN AIRPORT	97.1		20.1	2	21	16
CASEMENT AERODROME	103.1	149	21.9	2	18	16
DUBLIN (MERRION SQUARE)	94.7	148	18.8	5	19	13
CO. GALWAY						
GALWAY (UNIV. COLL.)	101.7	101	15.1	13	19	18
MAAM VALLEY	213.5		46.3	13	25	23
CONNEMARA NATIONAL PARK	163.6	124	33.2	20	24	19
BALLYGAR	99.1	108	15.7	14	24	21
CO. KERRY						
VALENTIA OBSERVATORY	122.3	110	35.5	20	21	18
ARDFERT (LISCAHANE)	90.3		18.4	20	22	18
CO. KILKENNY						
KILKENNY	101.0	142	33.7	14	23	16
CO. LEITRIM						
BALLINAMORE	105.6	104	15.3	14	25	21
CO. LIMERICK						
MOUNT RUSSELL	146.6		43.6	14	26	21
CO. LOUTH						
ARDEE (BOHARNAMOE)	83.3	113	23.9	2	25	12
CO. MAYO						
BELMULLET	122.7	130	22.7	20	24	19
STRAIDE	120.0	119	26.5	13	24	21
CONNAUGHT AIRPORT	119.2		21.5	13	25	22
CO. MEATH						
WARRENTOWN	93.3	120	20.5	2	21	17
CO. MONAGHAN						
CLONES	98.3	114	20.8	8	23	18
CO. OFFALY						
BIRR	94.1	120	27.4	14	22	16
DERRYGREENAGH	84.1	106	34.4	14	23	16
CO. SLIGO						
ARDTARMON	87.5		13.2	13	22	18
CO. TIPPERARY						
FETHARD (PARSONSHILL)	96.4		39.7	14	24	14
CO. WATERFORD						
WATERFORD (TYCOR)	74.6	94	11.3	18	24	17
DUNGARVAN (CARRIGLEA)	108.6		28.0	14	21	17
CO. WESTMEATH						
MULLINGAR II	108.2	130	26.5	14	22	18
CO. WEXFORD						
JOHNSTOWN CASTLE	109.8	132	18.1	6	23	14
ROSSLARE	89.0	125	17.0	7	19	14
CLONROCHE	80.5	84	14.1	18	23	17
JOHN F. KENNEDY PARK	86.3	105	15.6	16	19	16

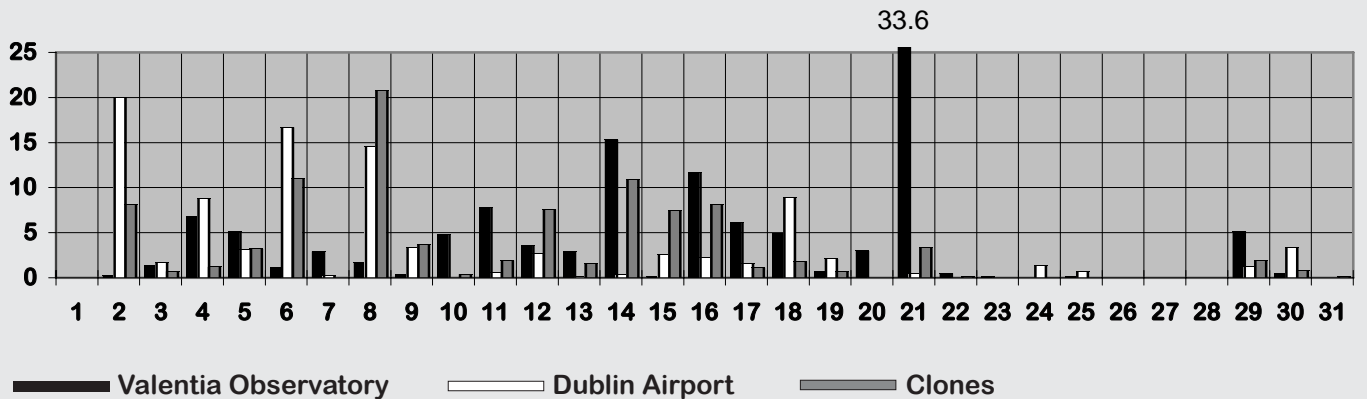
Total rainfall (mm)



Percentage of normal rainfall



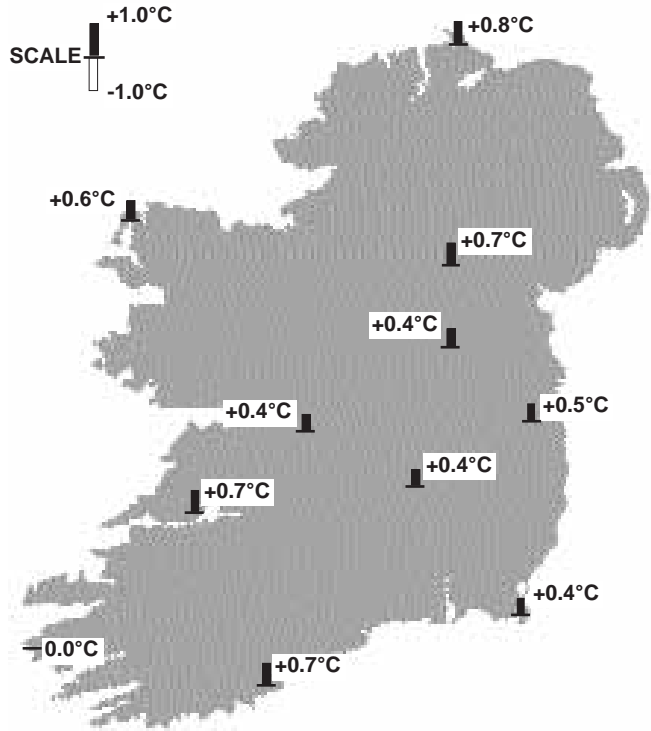
Daily 0-24h rainfall values (mm)



Warm overall despite cool spell early in the month

Mean temperatures for the month were slightly higher than normal almost everywhere, yet it was the coolest August for between 5 and 7 years at most stations. This reflects the sequence of higher than normal temperatures during August in recent years. Mean temperatures ranged from 13.6°C at Connaught Airport to 16.4°C at Dublin (Merrion Square), around half a degree higher than normal generally.

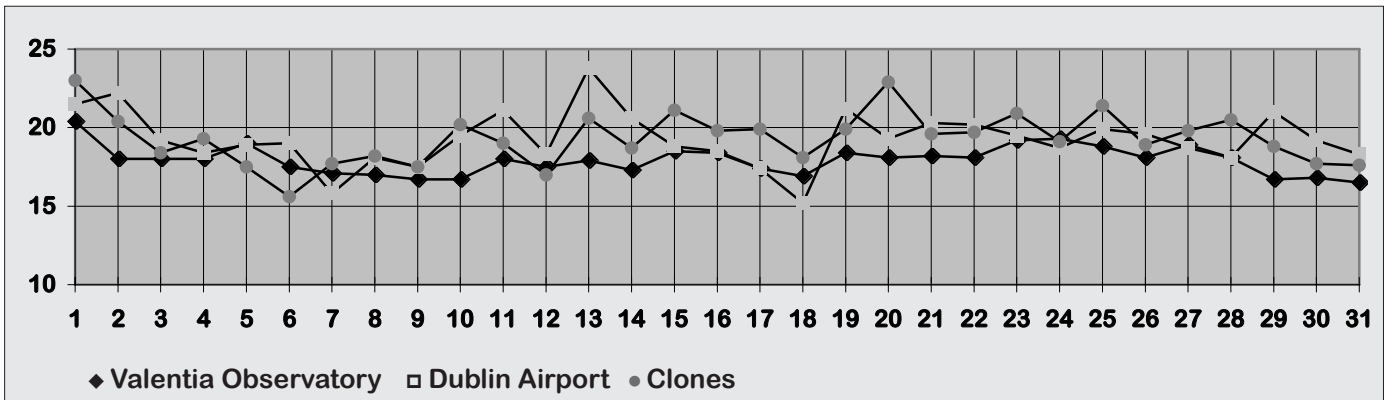
Despite the higher mean temperatures overall, there was relatively cool weather early in the month, with daily maximum temperatures below 20°C almost everywhere between the 3rd and 10th. The beginning of the month was very warm, however, with Warrenstown, Co. Meath, measuring the highest temperature of the month, 25.5°C on the 1st, the highest August temperature at the station since 1995. The lowest temperatures of the month were measured during the final week at most stations, with a slight ground frost at a few inland locations on the 27th and 28th. Straide, Co. Mayo, measured both the lowest air and grass minimum temperatures of the



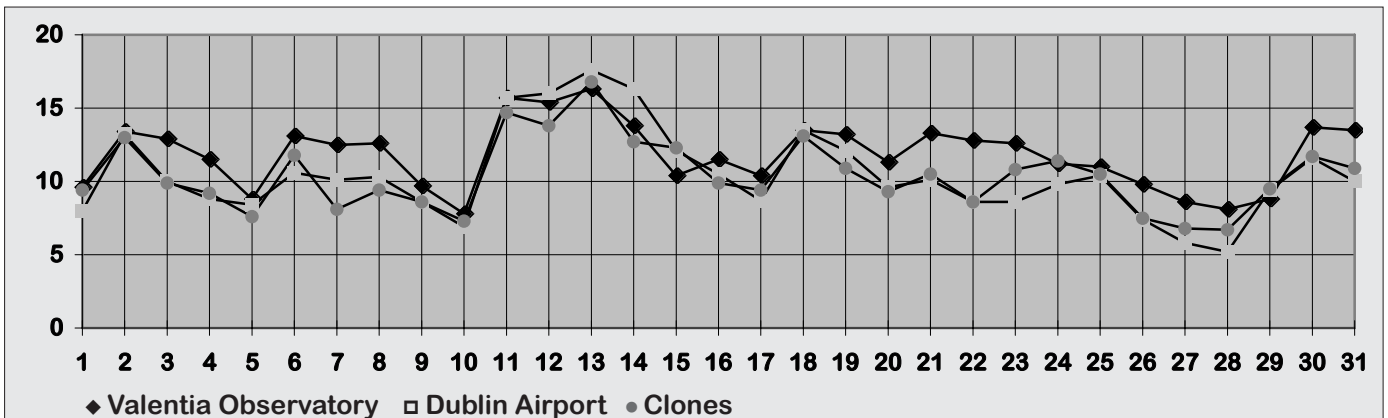
Mean Temperature
(difference from 1961-90 normals)

month on the 27th, with values of 2.7°C and -1.8°C respectively.

Daily 0-24h maximum temperatures (°C)



Daily 0-24h minimum temperatures (°C)



TEMPERATURE

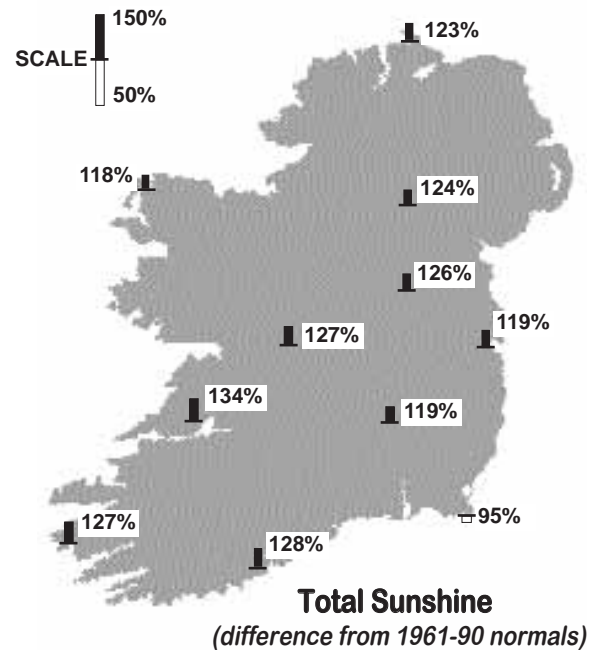
County/ Station	°C											
	Mean max.	Mean min.	Mean/ deviation from 1961-90 average		Highest max./date		Lowest min./date		Lowest grass min./date		Days with air frost ground frost	
CO. CLARE												
SHANNON AIRPORT	19.9	12.6	16.3	0.7	23.2	1	8.4	27	2.9	10	0	0
CARRON	17.9	10.5	14.2	0.1	20.4	1	6.2	5	0.5	27	0	0
CO. CORK												
FERMOY (MOORE PARK)	19.6	10.4	15.0	0.2	23.6	1	4.5	10	2.4	10	0	0
CORK AIRPORT	18.8	11.8	15.3	0.7	23.4	2	8.0	28	5.5	22	0	0
SHERKIN ISLAND	18.3	12.6	15.5	0.5	20.2	2	8.2	10	6.2	10	0	0
BALLINCURRIG (PEAFIELD)	18.9	10.3	14.6		24.5	2	6.5	10	3.5	10	0	0
CO. DONEGAL												
MALIN HEAD	17.2	12.5	14.9	0.8	21.0	1	9.6	28	8.1	28	0	0
BALLYSHANNON (CATHLEEN'S FALL)	18.1	12.1	15.1	0.6	22.1	1	7.1	27			0	
GLENTIES	18.0	10.6	14.3	0.3	20.7	1	5.9	10			0	
CO. DUBLIN												
DUBLIN (PHOENIX PARK)	20.3	11.0	15.7	0.9	25.2	13	5.8	28	-0.8	27	0	1
DUBLIN AIRPORT	19.4	10.8	15.1		23.8	13	5.2	28	1.9	27	0	0
CASEMENT AERODROME	19.6	11.0	15.3	0.5	24.6	1	5.1	27	2.0	27	0	0
DUBLIN (MERRION SQUARE)	19.5	13.2	16.4	0.5	24.4	13	9.8	28			0	
CO. GALWAY												
GALWAY (UNIV. COLL.)					not available							
MAAM VALLEY	18.2	11.4	14.8		20.7	1	6.1	10	1.9	10	0	0
CONNEMARA NATIONAL PARK	17.7	11.3	14.5	0.3	20.3	26	7.6	27			0	
BALLYGAR	19.5	10.6	15.1		22.4	1	5.0	27	3.5	27	0	0
CO. KERRY												
VALENTIA OBSERVATORY	17.9	12.0	15.0	0.0	20.4	1	7.8	10	2.8	27	0	0
ARDFERT (LISCAHANE)	19.5	11.2	15.4	0.5	23.8	1	5.2	27	3.6	27	0	0
CO. KILKENNY												
KILKENNY	20.1	10.5	15.3	0.4	24.5	1	4.4	29	0.7	5	0	0
CO. LEITRIM												
BALLINAMORE	18.9	9.6	14.3	0.1	22.4	1	4.4	27 28	2.5	27	0	0
CO. LIMERICK												
MOUNT RUSSELL	18.6	11.7	15.2		23.8	1	7.4	27	3.1	27	0	0
CO. LOUTH												
ARDEE (BOHARNAMOE)	20.3	10.3	15.3	0.9	25.4	1	4.3	27	3.2	28	0	0
CO. MAYO												
BELMULLET	17.7	12.1	14.9	0.6	18.9	1 18	7.3	27	4.0	27	0	0
STRAIDE	18.6	9.8	14.2	-0.2	20.5	2 25	2.7	27	-1.8	27	0	3
CONNAUGHT AIRPORT	16.8	10.4	13.6		18.7	1 2	7.3	10	4.2	10	0	0
CO. MEATH												
WARRENTOWN	19.9	11.2	15.6	1.0	25.5	1	6.9	27 28	2.4	27	0	0
CO. MONAGHAN												
CLONES	19.2	10.7	15.0	0.7	23.0	1	6.7	28	2.2	27	0	0
CO. OFFALY												
BIRR	19.4	10.8	15.1	0.4	23.5	1	3.7	27	0.7	27	0	0
DERRYGREENAGH	19.7	10.4	15.1	0.8	24.5	1	4.4	27	2.0	27	0	0
CO. SLIGO												
ARDTARMON	18.5	12.0	15.3		21.7	1	8.7	27	5.0	27	0	0
CO. TIPPERARY												
FETHARD (PARSONSHILL)	19.5	10.1	14.8		24.3	1	6.4	9	0.0	27	0	0
CO. WATERFORD												
WATERFORD (TYCOR)	19.7	11.5	15.6	0.4	23.0	2	6.8	28			0	
DUNGARVAN (CARRIGLEA)	19.9	11.3	15.6	0.3	23.4	2	5.7	22	5.2	28 29	0	0
CO. WESTMEATH												
MULLINGAR II	19.2	10.1	14.7	0.4	22.9	1	4.2	27	1.2	27	0	0
CO. WEXFORD												
JOHNSTOWN CASTLE	18.8	11.8	15.3	0.5	22.7	2	8.4	29	2.4	4 22	0	0
ROSSLARE	18.3	12.8	15.6	0.4	21.0	2	10.0	29	6.8	1	0	0
CLONROCHE	19.0	11.0	15.0	0.3	22.5	2	6.0	28	-0.7	28	0	1
JOHN F. KENNEDY PARK	18.8	10.8	14.8	-0.2	22.5	2	5.7	28	1.8	28	0	0

Sunniest in south

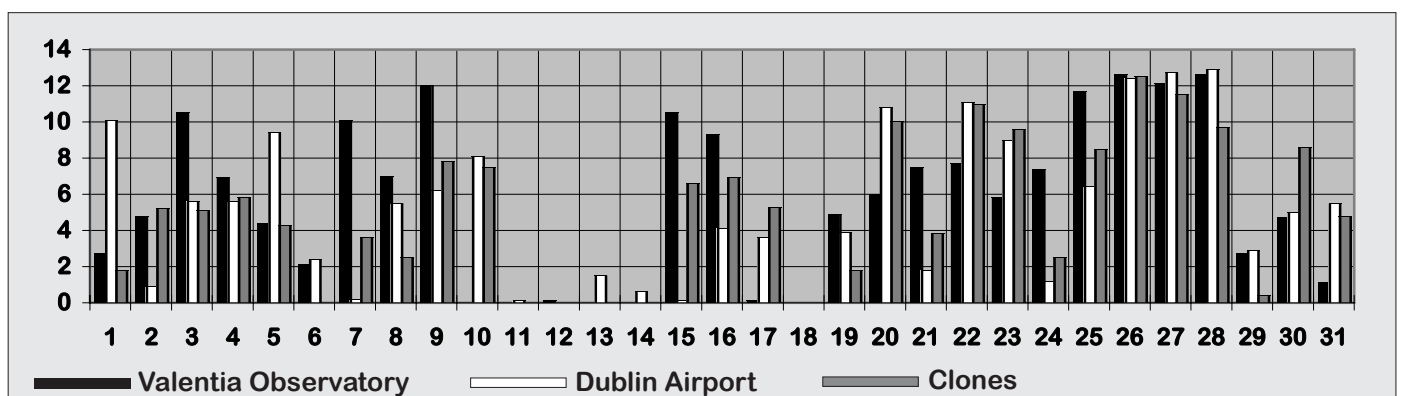
Sunshine totals were above normal everywhere except in parts of the southeast. They ranged from 141 hours at Johnstown Castle, Co. Wexford, to 215 hours at Sherkin Island, Co. Cork. While totals were a little below normal in the extreme southeast, they were around 30% higher than normal in parts of the south and southwest.

Sunshine was unevenly distributed through the month; little or no sunshine was measured in the period 11th to 14th, but ten or more hours per day were recorded at most stations between the 26th and 28th. The highest daily value, 13.7 hours, was measured at both Sherkin Island on the 3rd and at Ardfert (Liscahane), Co. Kerry, on the 27th. Global solar radiation totals for the month ranged from 99% of normal at Valentia Observatory to 112% at Belmullet.

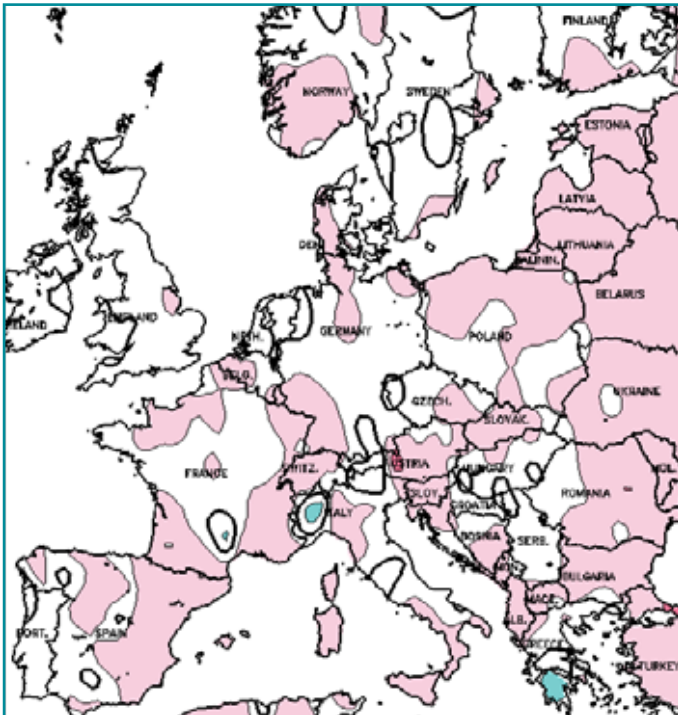
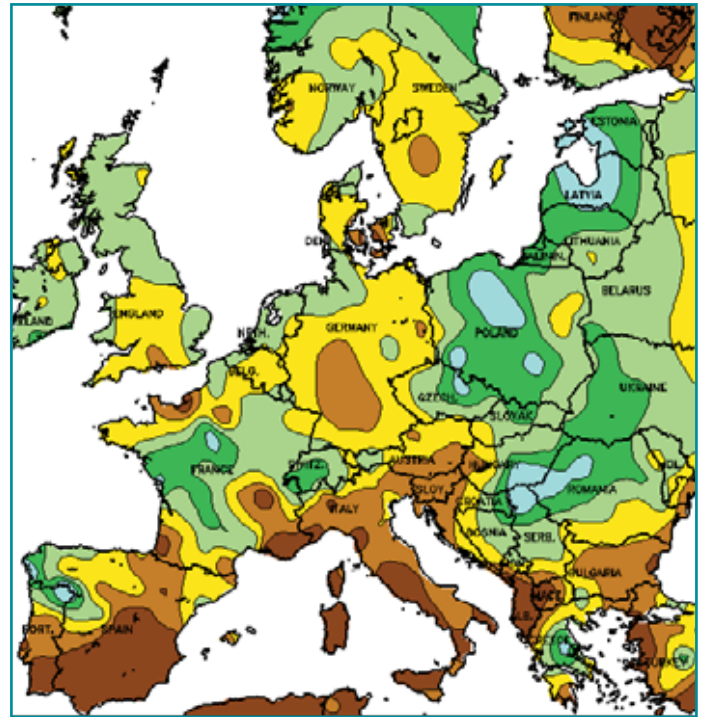
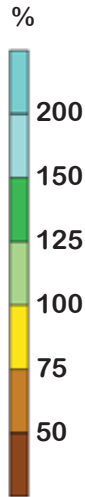
County/ Station	Daily mean (hours/day)	% of average	% of possible	Most in a day/date
CO. CLARE				
SHANNON AIRPORT	5.95	134	40	13.1 27
CO. CORK				
CORK AIRPORT	6.56	128	45	13.2 28
SHERKIN ISLAND	6.94	129	48	13.7 3
BALLINCURRIG (PEAFIELD)	6.43		32	12.7 28
CO. DONEGAL				
MALIN HEAD	5.29	123	35	12.5 27
BALLYSHANNON (CATHLEEN'S FALL)	5.06	116	34	13.1 26
CO. DUBLIN				
DUBLIN AIRPORT	5.15	102	35	12.9 28
CASEMENT AERODROME	5.69	119	38	12.9 26 28
CO. GALWAY				
GALWAY (UNIV. COLL.)	5.63	124	38	12.6 16
CO. KERRY				
VALENTIA OBSERVATORY	5.72	127	39	12.6 26 28
ARDFERT (LISCAHANE)	6.07		37	13.7 27
CO. KILKENNY				
KILKENNY	5.34	119	36	13.2 26
CO. LEITRIM				
BALLINAMORE	4.76	121	32	11.7 9
CO. MAYO				
BELMULLET	5.45	118	37	13.3 26
STRAIDE	4.59			11.7 27
CONNAUGHT AIRPORT	4.67		32	11.5 27
CO. MONAGHAN				
CLONES	5.07	124	34	12.5 26
CO. OFFALY				
BIRR	5.28	127	36	12.6 28
CO. WATERFORD				
DUNGARVAN (CARRIGLEA)	5.58	114	37	13.0 28
CO. WESTMEATH				
MULLINGAR II	5.54	126	37	13.2 27
CO. WEXFORD				
JOHNSTOWN CASTLE	4.56	89	31	12.1 28
ROSSLARE	5.55	95	38	13.1 28
CLONROCHE	5.23	104	36	12.3 26 28
JOHN F. KENNEDY PARK	5.44	119	37	12.0 28



Daily sunshine values (hours)



**SUMMER (June to August)
RAINFALL**
Percentage of
1961-1990 normal



**SUMMER (June to August)
MEAN TEMPERATURES**
difference from
1961-1990 normal

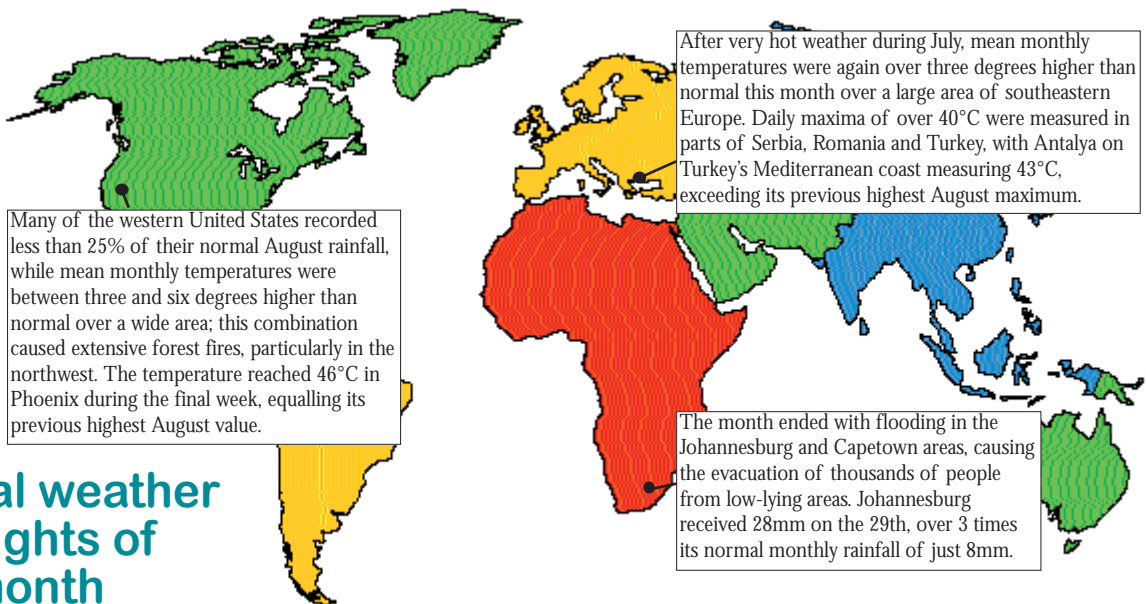
Data supplied by NOAA
Climate Prediction Centre,
US Department of Commerce

**Global weather
highlights of
the month**

Many of the western United States recorded less than 25% of their normal August rainfall, while mean monthly temperatures were between three and six degrees higher than normal over a wide area; this combination caused extensive forest fires, particularly in the northwest. The temperature reached 46°C in Phoenix during the final week, equalling its previous highest August value.

After very hot weather during July, mean monthly temperatures were again over three degrees higher than normal this month over a large area of southeastern Europe. Daily maxima of over 40°C were measured in parts of Serbia, Romania and Turkey, with Antalya on Turkey's Mediterranean coast measuring 43°C, exceeding its previous highest August maximum.

The month ended with flooding in the Johannesburg and Capetown areas, causing the evacuation of thousands of people from low-lying areas. Johannesburg received 28mm on the 29th, over 3 times its normal monthly rainfall of just 8mm.



The Weather of June, July and August 2001

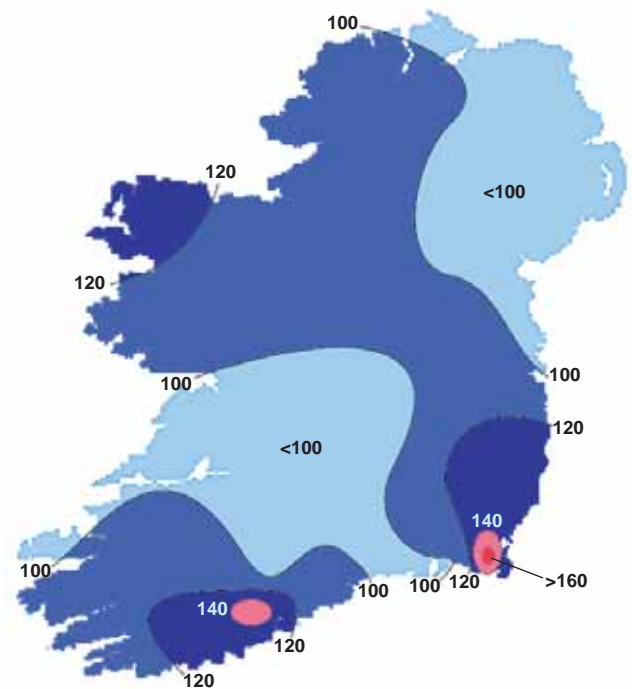
Warm but generally dull; wet in south and southeast

Rainfall for the summer season was very variable over the country; while it was below normal over much of Ulster and north Munster, it was much higher than normal in parts of the south and southeast (see chart below). June was relatively dry but both July and August were wetter than normal at most stations, especially in the south. Although Cork Airport received almost 50% more than normal rainfall for the season, it was not as wet there as the summer of 1997; 120mm of its total of 330mm this season fell on just two days, July 17th and August 14th. The number of raindays during the season (*days with 0.2mm or more rainfall*) varied between 45 at Rosslare and 70 at Belmullet, above the normal summer range of 37 to 57 wetdays.

Mean temperatures for the season were between 13.5°C and 15.0°C generally, a little higher than normal everywhere. June temperatures were around average, while both July and August were a little warmer than normal. The season began with some very cool weather, with many stations measuring their lowest summer air and ground temperatures for between 10 and 15 years during the first ten days of June. The highest temperatures of the season were measured during July, particularly during the final week of that month. Sunshine totals for the season were near normal in most places; June was dull except in the south and southwest, July totals were around

normal while August was relatively sunny. Unusually for summer, the highest daily values at many stations were measured during the last week of August, especially between the 26th and 28th. Mean wind speeds for the season of between 6 and 13 knots (*7 and 15m.p.h.*) were close to normal at most stations. Malin Head measured the highest gust of the season, 57 knots (*66m.p.h.*), on August 21st. Rosslare's gust of 54 knots (*62m.p.h.*) on July 18th was the highest summer gust there since 1986.

Summer Percentage of Normal Rainfall



County/ Station	RAINFALL (mm)			TEMPERATURE (°C)				SUNSHINE (HOURS)			NO. OF DAYS WITH:						
	Total	% of average	Most in a day amount date(s)	Mean	diff. from average	Extremes Highest	Lowest	Daily mean	% of average	most in a day amount date(s)	Rain	Snow	Air frost	Hail	Thunder	Fog	Gale gusts
CO. CLARE SHANNON AIRPORT	199.9	99	17.4 14 Aug	15.7	+0.5	26.0	4.4	5.21	110	13.1 27 Aug	51	0	0	0	1	4	4
CO. CORK CORK AIRPORT	330.1	148	65.5 17 Jul	14.7	+0.5	23.8	4.3	6.38	114	15.0 1 Jul	51	0	0	1	2	24	10
CO. DONEGAL MALIN HEAD	222.8	97	27.4 10 Jul	13.7	+0.2	21.6	6.4	4.75	100	14.2 18 Jul	62	0	0	1	2	5	19
CO. DUBLIN DUBLIN AIRPORT	169.5	n/a	20.0 2 Aug	14.6	n/a	26.9	2.1	5.14	94	12.9 28 Aug	52	0	0	0	2	9	6
CASEMENT AERODROME CO. KERRY	197.6	117	24.3 17 Jul	14.7	+0.3	26.6	0.9	4.86	95	12.9 2 Jul	53	0	0	1	5	3	4
VALENTIA OBSERVATORY CO. KILKENNY	265.5	101	33.6 21 Aug	14.6	+0.2	21.2	5.4	5.64	120	14.8 3 Jun	64	0	0	0	0	7	5
KILKENNY CO. MAYO	184.9	106	24.9 14 Aug	15.0	+0.4	26.6	1.3	5.00	105	13.2 26 Aug	50	n/a	0	n/a	n/a	n/a	4
BELMULLET CONNAUGHT AIRPORT	306.5	134	25.8 21 Aug	14.1	+0.4	19.7	4.3	5.00	105	13.3 26 Aug	70	0	0	1	0	9	10
CO. MONAGHAN CLONES	328.6	n/a	19.5 10 Jul	13.0	n/a	22.1	3.1	4.21	n/a	14.4 18 Jul	69	0	0	0	0	42	5
CO. OFFALY BIRR	209.6	98	20.8 8 Aug	14.4	+0.4	25.4	2.6	4.25	96	14.2 18 Jul	63	n/a	0	n/a	n/a	n/a	3
CO. WESTMEATH MULLINGAR II	189.2	98	23.2 14 Aug	14.6	+0.2	25.4	1.5	4.32	98	12.6 28 Aug	53	n/a	0	n/a	n/a	n/a	1
CO. WEXFORD ROSSLARE	232.4	110	24.1 6 Jun	14.2	+0.2	25.5	2.3	4.60	98	13.2 27 Aug	58	n/a	0	n/a	n/a	n/a	3
	219.8	127	34.7 17 Jul	15.0	+0.5	23.7	5.5	6.33	101	14.8 1 Jul	45	0	0	1	4	9	12