

# eDeposit Ireland

## Slieve Fyagh Bog SAC 000542

Item Type	report
Authors	Jeffrey, Rebecca
Citation	Rebecca Jeffrey, 'Slieve Fyagh Bog SAC 000542', [report], National Parks and Wildlife Service, 2016-08-16, Conservation objectives series (Ireland. National Parks and Wildlife Service), 2016-08-16
Publisher	National Parks and Wildlife Service
Rights	Y
Download date	2026-06-10 12:44:59
Link to Item	<a href="https://hdl.handle.net/20.500.14765/76907">https://hdl.handle.net/20.500.14765/76907</a>

# National Parks and Wildlife Service

---

## *Conservation Objectives Series*

---

### Slieve Fyagh Bog SAC 000542



An Roinn Ealaíon, Oidhreachta,  
Gnóthaí Réigiúnacha, Tuaithe agus Gaeltachta

---

Department of Arts, Heritage,  
Regional, Rural and Gaeltacht Affairs



**National Parks and Wildlife Service,  
Department of Arts, Heritage, Regional, Rural and Gaeltacht Affairs,  
7 Ely Place, Dublin 2, Ireland.  
Web: [www.npws.ie](http://www.npws.ie)  
E-mail: [nature.conservation@ahg.gov.ie](mailto:nature.conservation@ahg.gov.ie)**

**Citation:**

**NPWS (2016) Conservation Objectives: Slieve Fyagh Bog SAC 000542. Version 1.  
National Parks and Wildlife Service, Department of Arts, Heritage, Regional,  
Rural and Gaeltacht Affairs.**

**Series Editor: Rebecca Jeffrey  
ISSN 2009-4086**

## Introduction

The overall aim of the Habitats Directive is to maintain or restore the favourable conservation status of habitats and species of community interest. These habitats and species are listed in the Habitats and Birds Directives and Special Areas of Conservation and Special Protection Areas are designated to afford protection to the most vulnerable of them. These two designations are collectively known as the Natura 2000 network.

European and national legislation places a collective obligation on Ireland and its citizens to maintain habitats and species in the Natura 2000 network at favourable conservation condition. The Government and its agencies are responsible for the implementation and enforcement of regulations that will ensure the ecological integrity of these sites.

A site-specific conservation objective aims to define favourable conservation condition for a particular habitat or species at that site.

The maintenance of habitats and species within Natura 2000 sites at favourable conservation condition will contribute to the overall maintenance of favourable conservation status of those habitats and species at a national level.

Favourable conservation status of a habitat is achieved when:

- its natural range, and area it covers within that range, are stable or increasing, and
- the specific structure and functions which are necessary for its long-term maintenance exist and are likely to continue to exist for the foreseeable future, and
- the conservation status of its typical species is favourable.

The favourable conservation status of a species is achieved when:

- population dynamics data on the species concerned indicate that it is maintaining itself on a long-term basis as a viable component of its natural habitats, and
- the natural range of the species is neither being reduced nor is likely to be reduced for the foreseeable future, and
- there is, and will probably continue to be, a sufficiently large habitat to maintain its populations on a long-term basis.

### Notes/Guidelines:

1. The targets given in these conservation objectives are based on best available information at the time of writing. As more information becomes available, targets for attributes may change. These will be updated periodically, as necessary.
2. An appropriate assessment based on these conservation objectives will remain valid even if the targets are subsequently updated, providing they were the most recent objectives available when the assessment was carried out. It is essential that the date and version are included when objectives are cited.
3. Assessments cannot consider an attribute in isolation from the others listed for that habitat or species, or for other habitats and species listed for that site. A plan or project with an apparently small impact on one attribute may have a significant impact on another.
4. Please note that the maps included in this document do not necessarily show the entire extent of the habitats and species for which the site is listed. This should be borne in mind when appropriate assessments are being carried out.
5. When using these objectives, it is essential that the relevant backing/supporting documents are consulted, particularly where instructed in the targets or notes for a particular attribute.

## Qualifying Interests

*\* indicates a priority habitat under the Habitats Directive*

---

000542 Slieve Fyagh Bog SAC

---

7130 Blanket bogs (\* if active bog)

**Please note that this SAC adjoins Carrowmore Lake Complex SAC (000476) and Glenamoy Bog Complex SAC (000500). See map 2. The conservation objectives for this site should be used in conjunction with those for the adjacent sites as appropriate.**

## Supporting documents, relevant reports & publications

Supporting documents, NPWS reports and publications are available for download from: [www.npws.ie/Publications](http://www.npws.ie/Publications)

### NPWS Documents

<b>Year :</b>	1987
<b>Title :</b>	A survey to locate blanket bogs of scientific interest in County Mayo. Part I
<b>Author :</b>	Foss, P.; McGee, E.
<b>Series :</b>	A report commissioned by the Wildlife Service
<b>Year :</b>	1989
<b>Title :</b>	Survey to locate blanket bogs of scientific interest in Mayo. Part II
<b>Author :</b>	Doughlas, C.; Garvey, L.; Kelly, L.; O'Sullivan, A; Van Doorsleer, L.
<b>Series :</b>	A report commissioned by the Wildlife Service
<b>Year :</b>	2012
<b>Title :</b>	Ireland Red List no. 8: Bryophytes
<b>Author :</b>	Lockhart, N.; Hodgetts, N.; Holyoak, D.
<b>Series :</b>	Ireland Red List series, NPWS
<b>Year :</b>	2013
<b>Title :</b>	The status of EU protected habitats and species in Ireland. Volume 2. Habitats assessments
<b>Author :</b>	NPWS
<b>Series :</b>	Conservation assessments
<b>Year :</b>	2014
<b>Title :</b>	Guidelines for a national survey and conservation assessment of upland vegetation and habitats in Ireland, Version 2.0
<b>Author :</b>	Perrin, P.M.; Barron, S.J.; Roche, J.R.; O'Hanrahan, B.
<b>Series :</b>	Irish Wildlife Manual No. 79
<b>Year :</b>	2016
<b>Title :</b>	Slieve Fyagh Bog SAC (site code: 542) Conservation objectives supporting document- raised bog habitats V1
<b>Author :</b>	NPWS
<b>Series :</b>	Conservation objectives supporting document

### Other References

<b>Year :</b>	1988
<b>Title :</b>	The Irish red data book 1. Vascular plants
<b>Author :</b>	Curtis, T.G.F; McGough, H.N.
<b>Series :</b>	Wildlife Service, Dublin

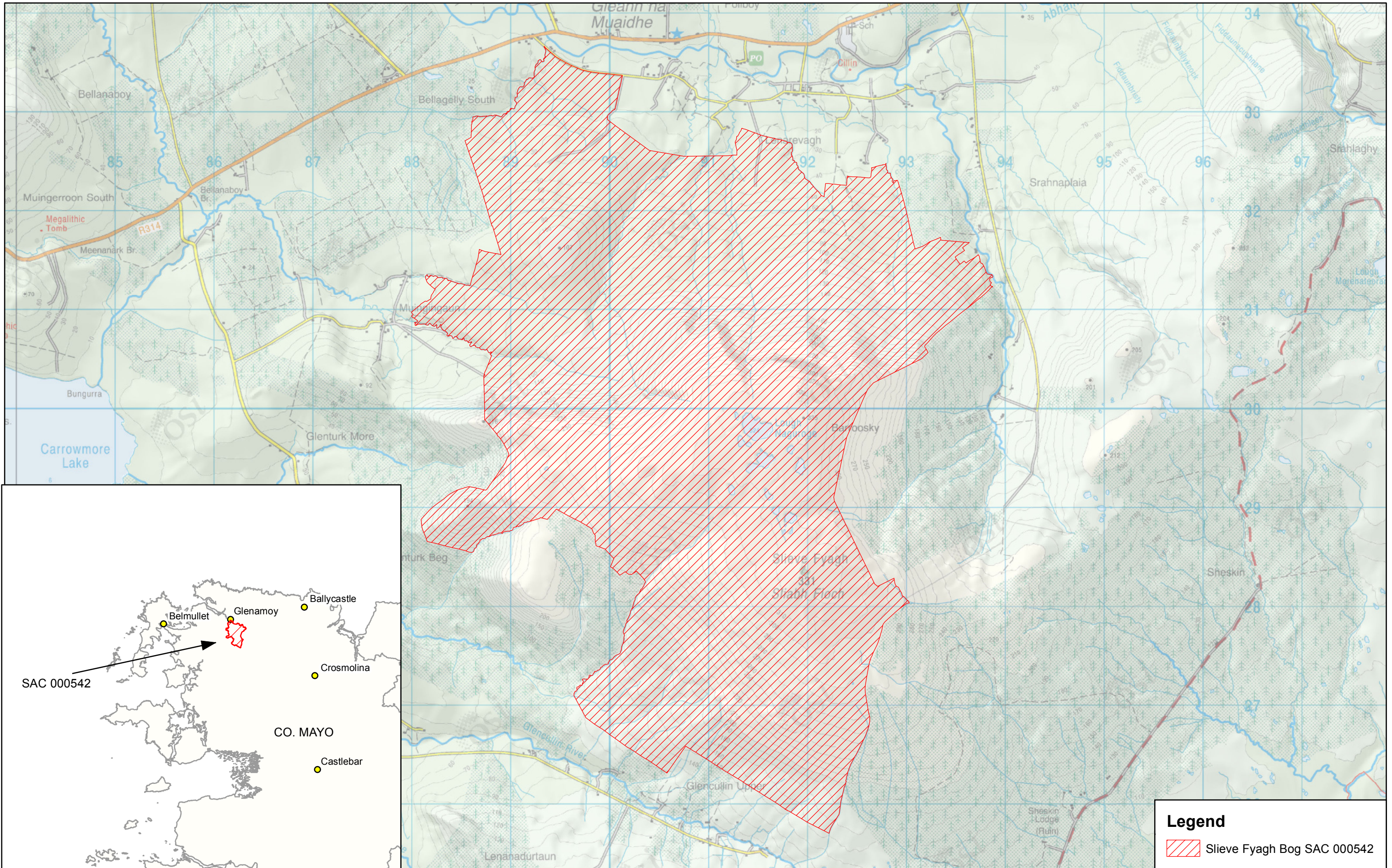
## Conservation Objectives for : Slieve Fyagh Bog SAC [000542]

### 7130 Blanket bogs (\* if active bog)


To restore the favourable conservation condition of Blanket bogs in Slieve Fyagh Bog SAC, which is defined by the following list of attributes and targets:

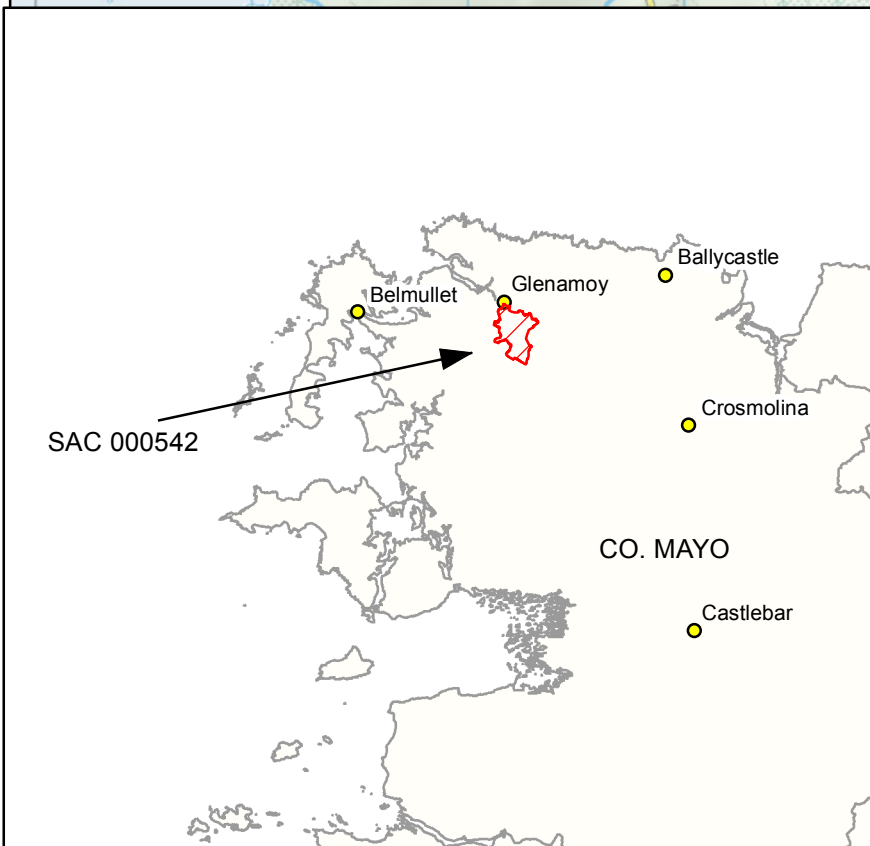
Attribute	Measure	Target	Notes
Habitat area	Hectares	Area stable or increasing, subject to natural processes	Blanket bog has not been mapped in detail for Slieve Fyagh Bog SAC, but from current available data the total area of the qualifying habitat is approximately 1,700 ha. Further information can be found in Foss and McGee (1987) and Douglas et al. (1989). Further details on this and the following attributes can be found in the Slieve Fyagh Bog SAC conservation objectives supporting document for upland habitats
Habitat distribution	Occurrence	No decline, subject to natural processes	Extensive areas of blanket bogs were recorded by Foss and McGee (1987) and Douglas et al. (1989) throughout this SAC. Further information can be found within these sources and the uplands supporting document
Ecosystem function: soil nutrients	Soil pH and appropriate nutrient levels at a representative number of monitoring stops	Maintain soil nutrient status within natural range	See the uplands supporting document for further details
Ecosystem function: peat formation	Active blanket bog as a proportion of the total area of Annex I blanket bog habitat	At least 99% of the total Annex I blanket bog area is active	See the uplands supporting document for further details
Ecosystem function: hydrology	Flow direction, water levels, occurrence of drains and erosion gullies	Natural hydrology unaffected by drains and erosion	Further details and a brief discussion of restoration potential is presented in the upland habitats supporting document
Community diversity	Abundance of variety of vegetation communities	Maintain variety of vegetation communities, subject to natural processes	Douglas et al. (1989) recorded different active blanket bogs communities within this SAC. Further information on vegetation communities associated with this habitat is presented in Perrin et al. (2014)
Vegetation composition: positive indicator species	Number of species at a representative number of 2m x 2m monitoring stops	Number of positive indicator species at each monitoring stop is at least seven	Based on Perrin et al. (2014), where the list of positive indicator species for this habitat is also presented. See the uplands supporting document for further details
Vegetation composition: lichens and bryophytes	Percentage cover at a representative number of 2m x 2m monitoring stops	Cover of bryophytes or lichens, excluding <i>Sphagnum fallax</i> , at least 10%	Based on Perrin et al. (2014). See the uplands supporting document for further details
Vegetation composition: potential dominant species	Percentage cover at a representative number of 2m x 2m monitoring stops	Cover of each of the potential dominant species less than 75%	Based on Perrin et al. (2014). See the uplands supporting document for further details, including the list of potentially dominant species
Vegetation composition: negative indicator species	Percentage cover at a representative number of 2m x 2m monitoring stops	Total cover of negative indicator species less than 1%	Based on Perrin et al. (2014), where the list of negative indicator species for this habitat is also presented. See the uplands supporting document for further details
Vegetation composition: non-native species	Percentage cover at, and in local vicinity of, a representative number of 2m x 2m monitoring stops	Cover of non-native species less than 1%	Based on Perrin et al. (2014). See the uplands supporting document for further details
Vegetation composition: native trees and scrub	Percentage cover in local vicinity of a representative number of monitoring stops	Cover of scattered native trees and shrubs less than 10%	Based on Perrin et al. (2014). See the uplands supporting document for further details
Vegetation structure: <i>Sphagnum</i> condition	Condition at a representative number of 2m x 2m monitoring stops	Less than 10% of the <i>Sphagnum</i> cover is crushed, broken and/or pulled up	Based on Perrin et al. (2014). See the uplands supporting document for further details

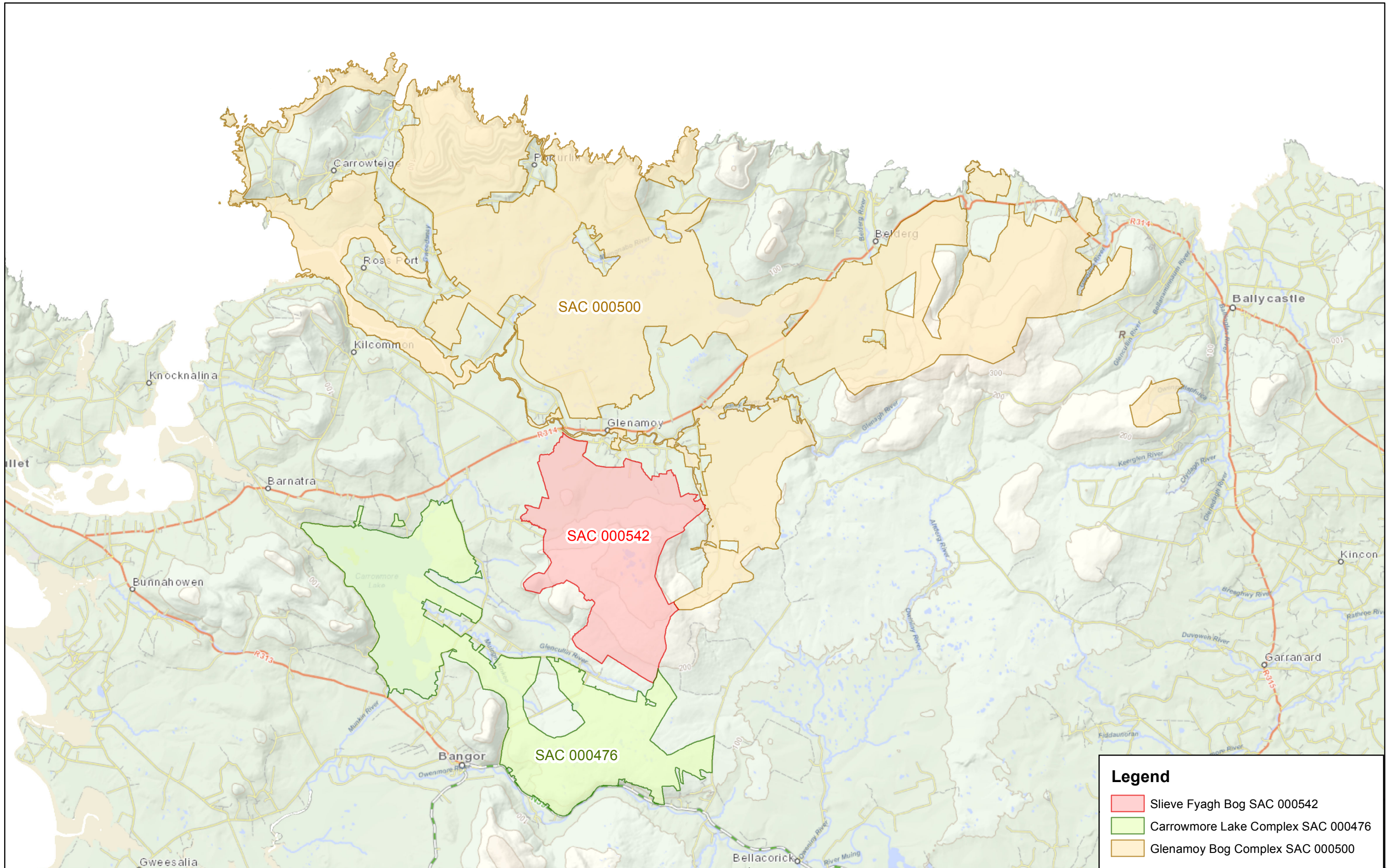
Vegetation structure: signs of browsing	Percentage of shoots browsed at a representative number of 2m x 2m monitoring stops	Last complete growing season's shoots of ericoids, crowberry ( <i>Empetrum nigrum</i> ) and bog-myrtle ( <i>Myrica gale</i> ) showing signs of browsing collectively less than 33%	Based on Perrin et al. (2014). See the uplands supporting document for further details
Vegetation structure: burning	Occurrence in local vicinity of a representative number of monitoring stops	No signs of burning in sensitive areas, into the moss, liverwort or lichen layer or exposure of peat surface due to burning	Based on Perrin et al. (2014), where the list of sensitive areas is also presented. See the uplands supporting document for further details
Physical structure: disturbed bare ground	Percentage cover at, and in local vicinity of, a representative number of 2m x 2m monitoring stops	Cover of disturbed bare ground less than 10%	Based on Perrin et al. (2014). See the uplands supporting document for further details
Physical structure: drainage	Percentage area in local vicinity of a representative number of monitoring stops	Area showing signs of drainage from heavy trampling, tracking or ditches less than 10%	Based on Perrin et al. (2014). See the uplands supporting document for further details
Physical structure: erosion	Occurrence in local vicinity of a representative number of monitoring stops	Less than 5% of the greater bog mosaic comprises erosion gullies and eroded areas	Based on Perrin et al. (2014). See the uplands supporting document for further details
Indicators of local distinctiveness	Occurrence and population size	No decline in distribution or population sizes of rare, threatened or scarce species associated with the habitat	This includes species listed in the Flora (Protection) Order, 2015 and/or the red data lists, Curtis and McGough (1988) and Lockhart et al. (2012). See the uplands supporting document for further details



**Legend**

 Slieve Fyagh Bog SAC 000542





**Legend**

- Slieve Fyagh Bog SAC 000542
- Carrowmore Lake Complex SAC 000476
- Glenamoy Bog Complex SAC 000500