

eDeposit Ireland

Epidemiology of COVID-19 Outbreaks/Clusters in Ireland Weekly Report Prepared by HPSC on 8th March 2021

Item Type	report
Citation	Health Protection Surveillance Centre, Health Service Executive, 'Epidemiology of COVID-19 Outbreaks/Clusters in Ireland Weekly Report Prepared by HPSC on 8th March 2021', [report], Health Protection Surveillance Centre, 2021-03-10
Publisher	Health Protection Surveillance Centre
Rights	Y
Download date	2026-05-13 22:37:20
Link to Item	https://hdl.handle.net/20.500.14765/95638



Epidemiology of COVID-19 Outbreaks/Clusters in Ireland

Weekly Report

Prepared by HPSC on 8th March 2021

Week 9 2021 (week ending 6th March 2021)

Note: Data are provisional

This report includes data extracted from CIDR on 8th March 2021 at 08:30am and includes COVID-19 outbreaks notified on CIDR up to midnight 06/03/2021.

Total Number of COVID-19 outbreaks notified since week 10:	13,087
Number of COVID-19 outbreaks notified from week 48:	4,052
Number of COVID-19 outbreaks notified since week 48 OPEN:	2,663
Number of COVID-19 outbreaks notified since week 48 CLOSED:	1,389
Number of COVID-19 outbreaks notified in week 9 2021:	431

Waves (weeks)	Dates
Wave 1 (weeks 10-31)	01/03/2020 – 01/08/2020
Wave 2 (week 32-47)	02/08/2020 – 21/11/2020
Wave 3 (week 48 onwards)	22/11/2020 onwards

The COVID-19 outbreak definition is available in appendix 3 of this report and on the HPSC website at: <https://www.hpsc.ie/a-z/respiratory/coronavirus/novelcoronavirus/casedefinitions/covid-19outbreakcasedefinitionforireland/>

Please note COVID-19 outbreaks and cases are continuously validated/updated on Ireland's national Computerised Infectious Disease Reporting System (CIDR).

Sincere thanks are extended to all those who are participating in the collection of data and reporting of data used in these reports. This includes the HSE COVID-19 Contact Management Programme (CMP), staff in ICU units, notifying clinicians, laboratory staff, public health doctors, nurses, surveillance scientists, microbiologists and administrative staff.

Note: Data are provisional

Summary (week 48 2020 to week 9 2021)

4,052 outbreaks have been reported from week 48 onwards (week beginning 22/11/2020; third wave of COVID-19 infection in Ireland) and key outbreak locations are as follows:

- 2,052 (51%) were in private houses*
- 198 (4.9%) were reported in hospitals
- 227 (5.6%) were reported in nursing homes
- 279 (6.9%) were reported in residential institutions
- 1,296 (32%) were reported in a range of other settings, including workplaces (n=308; 7.6%), travel/transport related settings (n=33; 0.8%) and restaurant/cafés (n=28; 0.7%). See Table 1 for further details.

1,389 outbreaks have been closed and 2,663 outbreaks are open (See Appendix 1, Table A for breakdown of outbreaks by location and outbreak status. Note that it is common practice not to close private house outbreaks on CIDR due to the large volume of outbreaks in this category.)

13,087 COVID-19 outbreaks have been reported in Ireland since week 10, 2020 (Figure 1).

Summary (week 9, 2021)

In **week 9** 2021, there were **431** COVID-19 outbreaks notified.

- The overall number of outbreaks notified in week 9 increased by 64 compared to week 8
- There were five new acute hospital outbreaks notified
- There were three nursing home outbreaks notified
- There were nine residential institution outbreaks notified
- Ten outbreaks associated with childcare facilities were notified
- There were no new outbreaks associated with school children +/- school staff notified
- Fifteen outbreaks were linked to third level students/University college
- There were 19 workplace outbreaks notified and locations are summarised in the workplaces section of this report
- The remaining 370 outbreaks included private houses* (n=295, excluding third-level student outbreaks), extended family (n=36), other healthcare services (n=10), social gathering (n=9), travel/transport related (n=6), retail (n=5), religious/other ceremony (n=4), community outbreaks (n=2, excluding third-level student outbreaks) and three in an unknown/other location

Late notifications of outbreaks

In **week 9**, 141 outbreaks were late notifications from October (n=2), December (n=44) and January (n=95) (See Appendix 2, Table B for breakdown of these outbreaks by month).

*Public Health are prioritising the reporting of outbreaks in key settings e.g. RCFs, hospitals. Therefore, the number of private house outbreaks is underestimated.

Note: Data are provisional

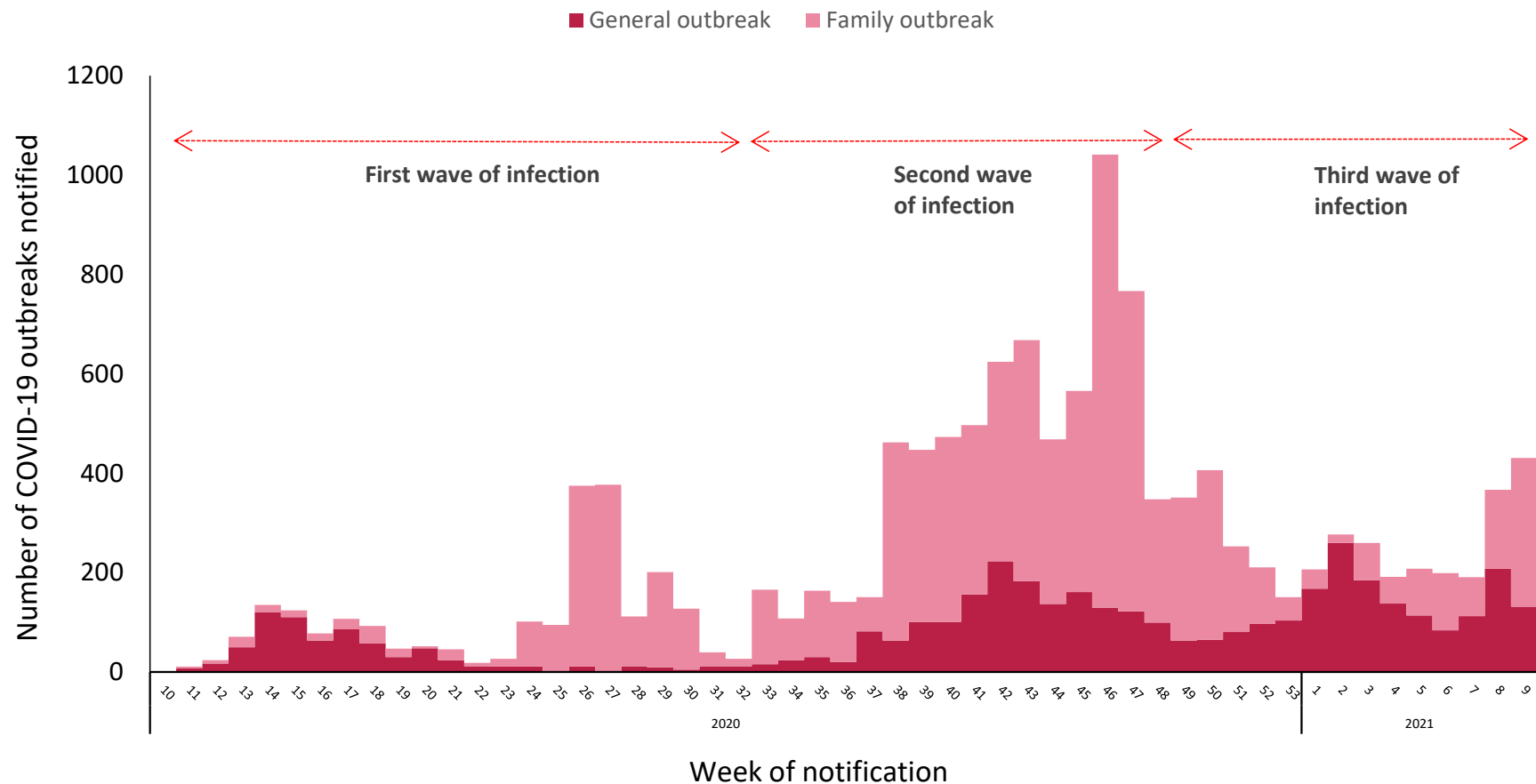


Figure 1: Epi-curve of COVID-19 outbreaks in all settings notified in Ireland by week of notification and outbreak type (see technical note 5, Appendix 3) to midnight on 06/03/2021, N=13,087. *Data source: CIDR*

Dashed red arrows indicate the timeline of the first, second and third waves of COVID-19 infection in Ireland (Second wave of infection commenced in week 32; week beginning 02/08/2020 and the third wave commenced in week 48 (22/11/2020)).

Note: Family outbreaks reported in July 2020 were composed largely of late notified outbreaks from the period March to May 2020.

Note: Data are provisional

Table 1: Number of COVID-19 outbreaks notified in Ireland by outbreak location and by week of notification from 22/11/2020 to midnight on 06/03/2021, and difference in number of outbreaks notified in week 9 2021 compared to the previous week, N=4,052. *Data source: CIDR*

Outbreak location	Week of Outbreak Notification									Difference in number of outbreaks notified since last week	Total (week 48 2020 to week 9 2021)
	Week 48 2020 to week 1 2021	2021									
		2	3	4	5	6	7	8	9		
Hospital	80	32	19	13	15	11	4	19	5	-14	198
Nursing home	102	44	26	23	11	5	7	6	3	-3	227
Community Hospital / Long-stay unit	11	1	4	1	0	1	5	0	0	0	23
Residential institution	73	72	33	30	19	13	11	19	9	-10	279
Community outbreak	24	7	2	3	3	4	0	27	4	-23	74
Other healthcare services	23	25	16	8	11	3	6	7	10	+3	109
Hotel	3	1	0	0	0	0	0	0	0	0	4
Restaurant / Cafe	15	6	0	0	2	0	2	3	0	-3	28
Public house	8	0	0	0	1	1	0	0	0	0	10
Social gathering	9	1	0	0	2	0	2	6	9	+3	29
Retail outlet	19	8	2	6	2	7	11	5	5	0	65
Workplace	80	35	36	24	28	21	29	36	19	-17	308
Travel related	9	0	0	6	0	3	3	1	3	+2	25
Transport	3	1	0	0	0	0	0	1	3	+2	8
Private house: family outbreaks	1160	9	65	33	69	89	54	131	259	+128	1869
Private house: general outbreaks	66	0	2	0	4	6	7	50	48	-2	183
Extended family	80	10	14	23	26	24	32	33	36	+3	278
Childcare Facility	35	14	27	14	12	5	9	15	10	-5	141
School*	98	8	8	1	1	0	0	3	0	-3	119
University/College**	6	0	0	2	1	0	1	4	1	-3	15
Religious/Other ceremony	11	1	3	2	1	3	6	0	4	+4	31
Sporting activity/fitness	1	0	0	0	0	0	0	0	0	0	1
Personal grooming service	2	0	0	0	0	0	0	0	0	0	2
Other	9	2	3	3	0	3	2	1	3	+2	26
Total	1927	277	260	192	208	199	191[^]	367^{^^}	431^{^^^}	+64	4052

*These outbreaks are outbreaks associated with school children +/- school staff. Transmission of COVID-19 within the school has not necessarily been established in these outbreaks.

These outbreaks are associated with a university/college location and do not include outbreaks among third level students that occurred at other locations. *Contains outbreaks for weeks in 2020 (48-53) and 2021 (weeks 1-9). [^]Includes late outbreak notifications from December 2020 (n=1), January (n=3) and February (n=1) 2021 ^{^^}Includes 99 late notifications from November, December and January. ^{^^^}Includes 141 late notifications from October, December and January (see Appendix 2, Table B for breakdown).

Note: Data are provisional

COVID-19 Outbreaks/Clusters in Residential Facilities and Hospital settings in Ireland

A summary of outbreaks linked to nursing homes, acute hospitals, community hospital/long-stay units, and other residential institutions is shown in Figure 2 (A-D), in the subsequent “Focus” sections and Tables 2-5.

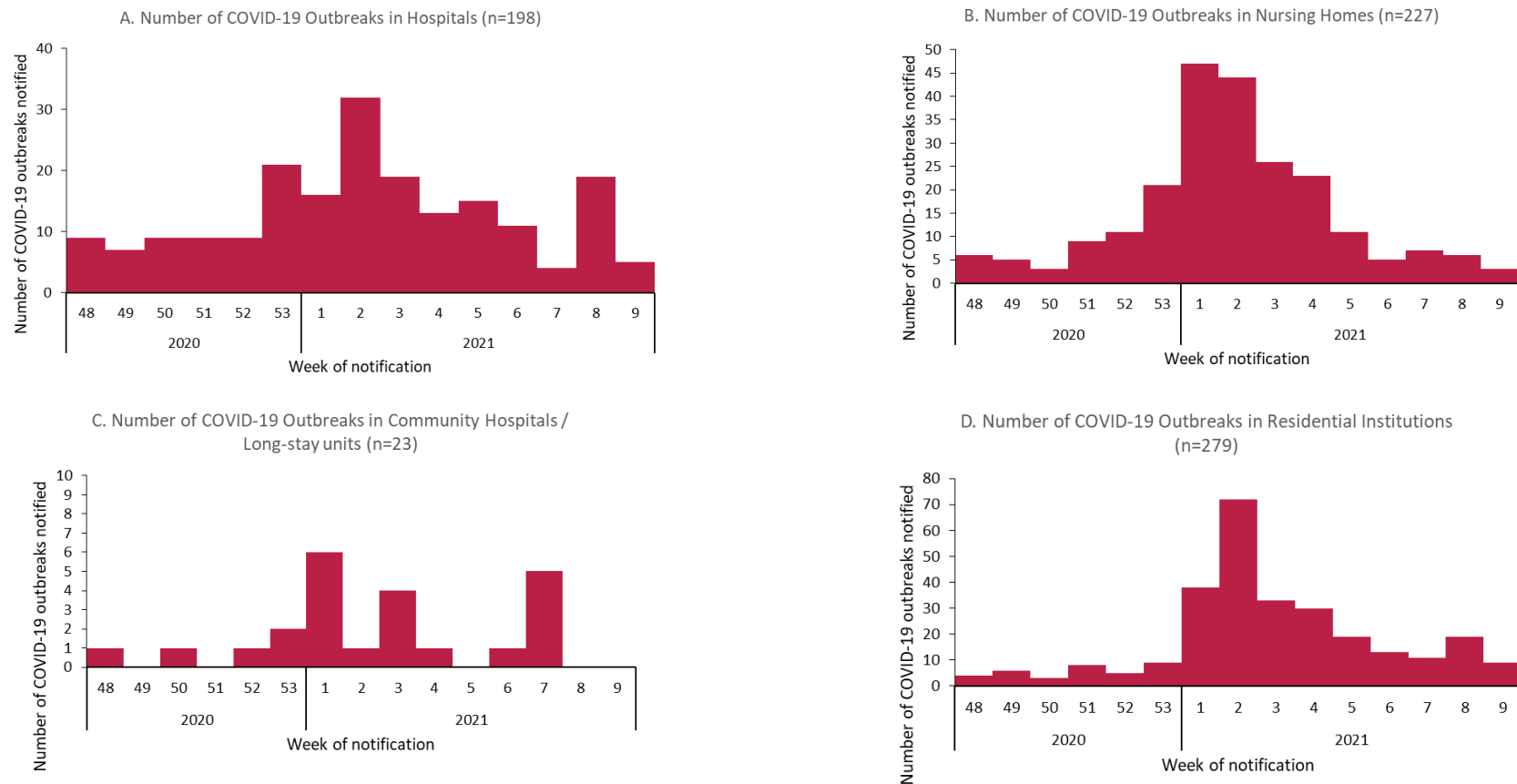


Figure 2 A-D: Epi-curve of COVID-19 outbreaks in (A) Acute Hospitals, (B) Nursing Homes*, (C) Community Hospitals/Long-stay units^ and (D) Residential institutions^^* notified in Ireland by week of notification, from 22/11/2020 to midnight on 06/03/2021. ^Week 7 includes late outbreak notifications from December 2020, January and February 2021. ^^Week 8 includes late notifications from November and December 2020 and January 2021 (Hospitals=11, Nursing home=1, Residential Institutions=7). *Week 9 includes late notifications from January 2021 (Nursing home=1, Residential Institutions=2). *Data source: CIDR*

Note: Data are provisional

Focus on Nursing Homes and Community Hospitals

There have been **630** outbreaks in nursing homes and community hospital/long stay units, with **15,838** linked laboratory confirmed COVID-19 cases, notified in Ireland since 01/03/2020.

From 22/11/2020 to 06/03/2021, **250** outbreaks in nursing homes or community hospital/long-stay units have been notified and **124** of these outbreaks remain open. A total of **7,889 laboratory confirmed cases** linked with outbreaks in nursing homes or community hospital/long-stay units have been notified. Of those cases, 535 were hospitalised, eleven were admitted to ICU, and 888 laboratory confirmed cases linked to outbreaks in these settings died (Table 2).

Cases were reported to be a healthcare worker (HCW) in 3,288 cases, not a HCW in 3,959 cases and HCW status was unknown for the remaining cases (Figure 3).

There were three new outbreaks reported in nursing homes and no new outbreaks in community hospital/long-stay units during week 9 2021.

Table 2: Number of COVID-19 outbreaks and cases[‡] in nursing homes and community hospital/long-stay units in Ireland, from 22/11/2020 to midnight on 06/03/2021. *Data source: CIDR*

Outbreak location	Number of outbreaks notified					Laboratory confirmed cases [‡] linked to outbreaks (week 48-9)*				
	Week 9	Week 9 outbreaks: Range in no. of cases [#]	Week 48-9*	Number open	Open outbreaks: Range in no. of cases [#]	Cases notified in week 9	Total cases	Total hospitalised cases	Total ICU cases	Total number of deaths
Nursing home	3**	2-54	227	104	2-127	17	7227	434	9	844
Community Hospital/Long-stay unit	0	n/a	23	20	4-92	<5	662	101	<5	44
Total	3	0-54	250	124	2-127	17	7889	535	11	888

[‡]Case numbers fewer than 5 are not presented here.

[#]n/a is used where there were no outbreaks in a category or where there are no confirmed cases currently linked to any outbreak in that category (see technical note 6, Appendix 3).

*Contains data from weeks in 2020 (48-53) and 2021 (weeks 1-9).

** Includes one late outbreak notification from January 2021.

Note: Data are provisional and confidential

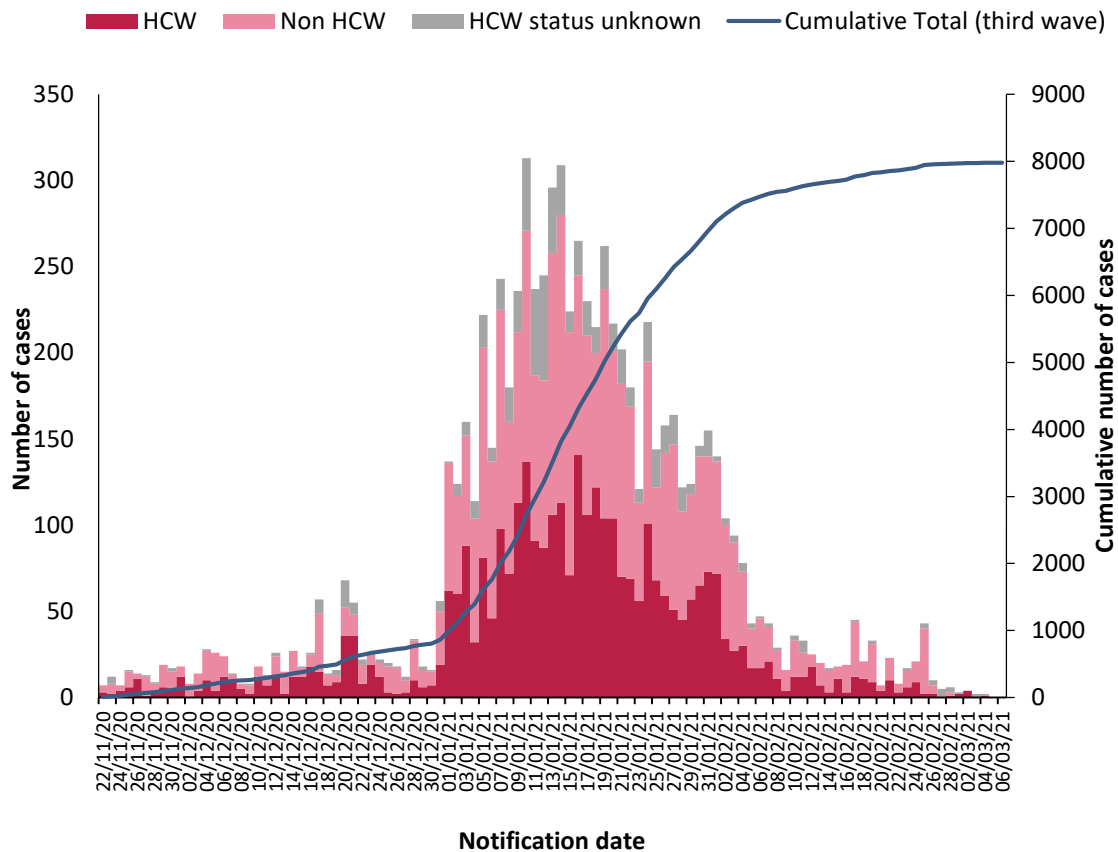


Figure 3: Epi-curve of confirmed COVID-19 cases linked to outbreaks in nursing homes and community hospital/long-stay units by healthcare worker (HCW) status and by date of notification, and cumulative number of confirmed cases during the third wave of infection by date of notification, from 22/11/2020 to midnight 06/03/2021. *Data source: CIDR*

Note: Data are provisional

Focus on Acute Hospitals

There were **376** outbreaks in acute hospitals, with **4,820** linked laboratory confirmed COVID-19 cases, notified in Ireland since 01/03/2020.

From 22/11/2020 to 06/03/2021, **198** outbreaks in acute hospitals have been notified and 94 of these outbreaks remain open. A total of **2,372 laboratory confirmed cases** linked with outbreaks in acute hospitals have been notified. Of those, 54 were admitted to ICU and 318 died (Table 3). Cases were reported to be a healthcare worker (HCW) in 966 cases, not a HCW in 1,287 cases and HCW status was unknown for the remaining cases (Figure 4).

There were five new outbreaks reported in acute hospitals during week 9 2021:

Table 3: Number of COVID-19 outbreaks and cases[‡] in acute hospital settings in Ireland, from 22/11/2020 to midnight on 06/03/2021. *Data source: CIDR*

Acute Hospitals	Number of outbreaks notified					Laboratory confirmed cases linked to outbreaks (week 48-9)*			
	Week 9	Week 9 outbreaks: Range in no. of cases	Week 48-9*	Number open	Open outbreaks: Range in no. of cases	Cases notified in week 9	Total cases	Total ICU cases	Total number of deaths
	5	0-13	198	94	0-149	<5**	2372	54	318

‡Case numbers fewer than 5 are not presented here. *Contains data from weeks in 2020 (48-53) and 2021 (weeks 1-9) **Not all cases are linked to outbreaks as of yet

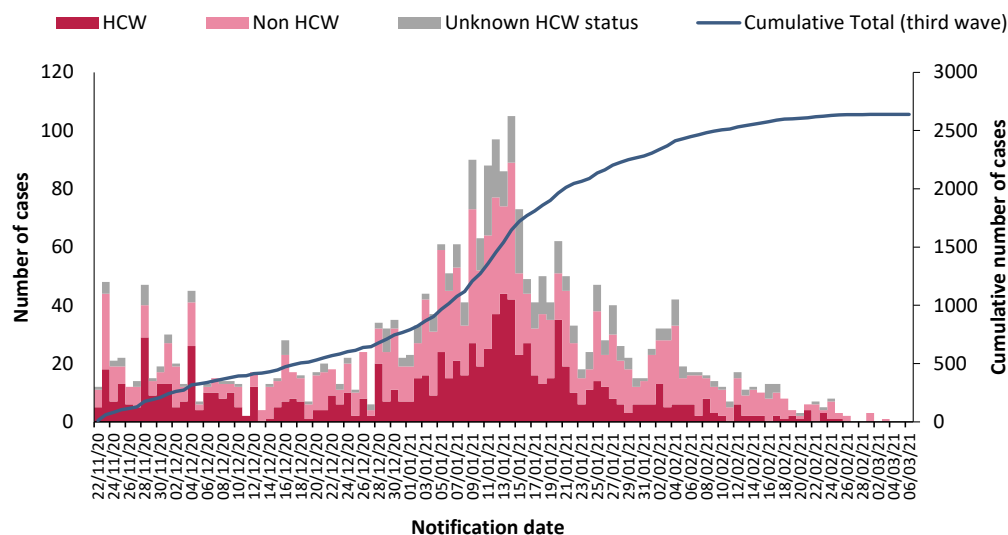


Figure 4: Epi-curve of confirmed COVID-19 cases linked to outbreaks in acute hospitals by healthcare worker (HCW) status and by date of notification, and cumulative number of confirmed cases during the third wave of infection by date of notification, from 22/11/2020 to 06/03/2021. *Data source: CIDR*

Note: Data are provisional

Focus on Residential Institutions (see footnote¹)

There were **436** outbreaks in residential institutions, with **2,910** linked laboratory confirmed COVID-19 cases, notified in Ireland since 01/03/2020.

From 22/11/2020 to 06/03/2021, **213** outbreaks in residential institutions have been notified and 103 of these outbreaks remain open. There were **1,619 laboratory confirmed cases** linked with outbreaks in residential institutions. Of those, 63 cases linked to outbreaks in residential facilities were hospitalised, three were admitted to ICU and 29 cases died (Table 4). The majority of residential institution outbreaks were notified in centres for disabilities, with **160** outbreaks and 1,226 linked cases notified since week 48.

There were three new outbreaks reported in residential institutions during week 9 2021

Table 4: Number of COVID-19 outbreaks and cases[‡] in residential institutions in Ireland, from 22/11/2020 to midnight on 06/03/2021. *Data source: CIDR*

Outbreak location	Number of outbreaks notified					Laboratory confirmed cases linked to outbreaks (week 48-9)*				
	Week 9	Week 9 outbreaks: Range in no. of cases [#]	Week 48-9*	Number open	Open outbreaks: Range in no. of cases [#]	Cases notified in week 9	Total cases	Total hospitalised cases	Total ICU cases	Total number of deaths
Centre for disabilities	1	4	160	78	0-46	<5	1226	46	<5	19
Centre for older people	0	n/a	14	8	1-44	<5	176	<5	<5	7
Children's / TUSLA residential centre	1	n/a	15	7	0-7	<5	53	<5	<5	<5
Mental health facility	1 [^]	4	18	7	0-11	<5	116	13	<5	<5
Other	0	n/a	5	2	0-19	5	41	<5	<5	<5
Not Specified	0	n/a	1	1	0-7	<5	7	<5	<5	<5
Total	3	0-4	213	103	0-46	7**	1619	63	<5	29

#n/a is used where there were no outbreaks in a category or where there are no confirmed cases currently linked to any outbreak in that category (see technical note 6, Appendix 3). ‡Case numbers fewer than 5 are not presented here. *Contains data from weeks in 2020 (48-53) and 2021 (weeks 1-9). **Not all cases are linked to outbreaks as of yet. ^Includes one late outbreak notification from January 2021

¹ This section focuses on the following residential settings: Centres for disabilities, Centres for older people, Children's/TUSLA residential centres and mental health facilities. Homeless services, addiction services, direct provision centres and prisons are reported in the Focus on Vulnerable Populations section.

Note: Data are provisional

COVID-19 Outbreaks in Other Vulnerable Populations

This brief overview of COVID-19 outbreaks in vulnerable populations/settings only includes outbreaks involving the Roma community, Irish Traveller community, outbreaks in Direct Provision Centres, facilities for the homeless/those with addiction issues and prisons notified up to midnight on 06/03/2021 (Table 5).

There were 37 new outbreaks reported in vulnerable populations during week 9 2021:

- Thirty outbreaks among Irish Travellers
- Four outbreaks in the homeless population
- One outbreak in the Roma population
- One outbreak in a Direct Provision Centre
- One outbreak in a prison

Table 5: Number of COVID-19 outbreaks in settings involving vulnerable populations, including the Roma community, Irish Traveller community, outbreaks in Direct Provision Centres, facilities for the homeless/those with addiction issues and prisons notified from week 48 (week commencing 22/11/2020) to midnight on 06/03/2021 and laboratory confirmed cases[‡] linked to these outbreaks. *Data source: CIDR*

Vulnerable populations	Number of outbreaks notified					Laboratory confirmed cases linked to outbreaks (week 48-9)**				
	Week 9	Week 9 outbreaks: Range in no. of cases [#]	Week 48-9**	Number open	Open outbreaks: Range in no. of cases [#]	Cases notified in week 9	Total cases	Total hospitalised cases	Total ICU cases	Total number of deaths*
Roma community	1	2	7	3	2-11	<5	49	8	<5	<5
Irish Travellers	30	1-100	187	130	0-100	119	2364	105	14	5
Direct provision centres	1	2	34	9	1-25	5	302	<5	<5	<5
Homeless [^]	4 [‡]	4-25	17	7	2-25	43	111	<5	<5	<5
People with addictions	0	n/a	9	3	4-19	<5	58	<5	<5	<5
Prisons	1	9	5	3	3-29	<5	101	<5	<5	<5
Total	37	0-100	259	155	0-100	168	2985	120	16	6

[‡]Case numbers fewer than 5 are not presented here. [^] Homeless facilities include some facilities that provide long term supported accommodation. Also includes staff of homeless facilities.

[#]n/a is used where there were no outbreaks in a category or where there are no confirmed cases currently linked to any outbreak in that category (see technical note 6, Appendix 3). [‡]Case numbers fewer than 5 are not presented here. ^{**}Contains data from weeks in 2020 (48-53) and 2021 (weeks 1-9). [‡]Includes one late outbreak notification from January 2021

Note: Data are provisional

COVID-19 Outbreaks in Workplaces

In total, **308** COVID-19 outbreaks in workplaces² have been notified from 22/11/2020 up to midnight on 06/03/2021. Since week 48, **70** COVID-19 outbreaks have been notified in businesses associated with the production or processing of food and beverages, of which **38** were in meat/poultry/fish plants in all HSE areas.

There were **19 COVID-19 workplace outbreaks notified during week 9 2021:**

- Six outbreaks were associated with the commercial sector
- Four outbreaks occurred in food production workplaces, two in meat-plants and two in other food/beverage production facilities
- Three outbreaks related to manufacturing
- Three outbreaks related to the construction sector
- There was one office-based outbreak and two in other workplace locations

Table 6: Number of COVID-19 workplace outbreaks notified from 22/11/2020 to midnight on 06/03/2021 and laboratory confirmed cases[‡] linked to workplace outbreaks. *Data source: CIDR*

Workplace outbreaks	Number of outbreaks notified					Laboratory confirmed cases linked to outbreaks (week 48-9) ^{***}				
	Week 9	Week 9 outbreaks: Range in no. of cases [#]	Weeks 48-9 ^{***}	Number open	Open outbreaks: Range in no. of cases [#]	Cases notified in week 9	Total cases	Total hospitalised cases	Total ICU cases	Total number of deaths [*]
Meat/poultry Production and Processing	2	4-9	38	31	0-132	22	949	5	<5	<5
Other food/beverage Production and Processing	2	4-6	32	25	0-96	5	297	7	<5	<5
Construction industry ^{**}	3	2-5	29	24	2-22	9	135	<5	<5	<5
Commercial	6	1-6	74	50	1-54	10	421	7	<5	<5
Manufacturing	3	1-4	49	32	1-49	15	336	8	<5	<5
Office-based	1	2	30	13	2-19	<5	159	6	<5	<5
Defence/Justice/Emergency services	0	n/a	40	24	0-16	6	210	<5	<5	<5
Other Workplace [^]	2	0-3	16	9	2-18	<5	71	<5	<5	<5
Total	19	0-9	308	208	0-132	70	2578	35	10	<5

[‡]Case numbers fewer than 5 are not presented here. ^{*}All COVID-19 cases that died and were linked to outbreaks in these settings have been laboratory confirmed. No deaths in probable/possible cases linked to outbreaks in these settings have been notified. ^{**}Cases linked to some construction site outbreaks may reside in Northern Ireland and consequently will be notified in that jurisdiction. These cases will not be included in the case numbers for Ireland. ^{***}Contains data from weeks in 2020 (48-53) and 2021 (weeks 1-9). [^]“Other workplace” includes businesses that do not fit in the above workplace categories. #n/a is used where there were no outbreaks in a category or where there are no confirmed cases currently linked to any outbreak in that category (see technical note 6, Appendix 3).

² Workplace outbreaks exclude the following workplaces: hospitals, residential facilities, hotels, public houses, retail outlets, and other settings (outbreaks in GP practices and outbreaks associated with home carers). These are reported under those headings.

Note: Data are provisional

COVID-19 Outbreaks associated with school children (+/- staff), universities/colleges and childcare facilities

In total, **357** COVID-19 outbreaks associated with school children (+/- staff), universities/colleges/third level students and childcare facilities have been notified from 21/11/2020 up to midnight on 06/03/2021.

During **week 9** 2021 there were **15** associated with University/college or third level students, **10** COVID-19 outbreaks associated with childcare facilities and **no** COVID-19 outbreaks associated with school children +/- staff

Of the **15** outbreaks associated with University/college or third level students:

- 13 outbreaks occurred with 36 confirmed cases
- One outbreak with three confirmed cases was in a University/College setting
- One outbreak had four confirmed cases

Table 7: Number of COVID-19 outbreaks associated with school children (+/- staff), universities/colleges/third level students and childcare facilities notified to midnight on 06/03/2021 and laboratory confirmed cases[†] linked to these outbreaks. *Data source: CIDR*

Outbreak location	Number of outbreaks notified					Laboratory confirmed cases linked to outbreaks (week 48-9) ^{##}				
	Week 9	Week 9 outbreaks: Range in no. of cases [#]	Week 48-9 ^{##}	Number open	Open outbreaks: Range in no. of cases [#]	Cases notified in week 9	Total cases	Total hospitalised cases	Total ICU cases ^{***}	Total number of deaths
School*	0	n/a	119	31	2-54	<5	580	7	<5	<5
University/college/third level students**	15	2-6	97	86	1-169	6 [^]	736	11	<5	<5
Childcare facility	10	0-9	141	73	0-22	34	783	5	<5	<5
Total	25	0-9	357	190	0-169	43	2099	23	<5	<5

†Case numbers fewer than 5 are not presented here. *These outbreaks are outbreaks associated with school children +/- or school staff. Transmission of COVID-19 within the school has not necessarily been established in these outbreaks. **These outbreaks also include outbreaks among third level students that may have occurred in other locations, such as private houses or social gatherings, and may not be directly linked to a University/college location #n/a is used where there were no outbreaks in a category or where there are no confirmed cases currently linked to any outbreak in that category (see technical note 6, Appendix 3) ^{##}Contains data from weeks in 2020 (48-53) and 2021 (weeks 1-9). [^]Not all cases are linked to outbreaks as of yet.

Note: Data are provisional

Appendices

Appendix 1

Table A: Number of COVID-19 outbreaks notified in Ireland by outbreak location and closure status, to midnight 06/03/2021, N=13,087. *Data source: CIDR*

Outbreak Location	Outbreak closure status (all outbreak classifications)		
	Closed	Open	Total
Hospital	275	101	376
Nursing home	470	105	575
Community Hospital/Long-stay unit	34	21	55
Residential institution	428	130	558
Other healthcare service	64	69	133
Private house*	3380	5513	8893
Workplace	369	212	581
Travel related	62	23	85
Transport	10	8	18
Extended family	215	255	470
Childcare facility	143	76	219
Community outbreak	127	144	271
Hotel	14	1	15
Guest house/ B&B	1	0	1
Public house	30	3	33
Restaurant / Cafe	60	15	75
Social gathering	58	21	79
Retail outlet	64	40	104
School**	280	39	319
University/college***	33	9	42
Religious/Other ceremony	22	29	51
Sporting activities/fitness	28	0	28
Other recreation activity	1	0	1
Personal grooming service	5	2	7
Other	73	22	95
Unknown	1	0	1
Not specified	2	0	2
Total	6249	6838	13087

*It is common practice not to close private house outbreaks on CIDR due to the large volume of these types of outbreaks on CIDR.

**These outbreaks are outbreaks associated with school children +/- or school staff. Transmission of COVID-19 within the school has not necessarily been established in these outbreaks.

***These outbreaks are associated with a university/college location and do not include outbreaks among third level students that occurred at other locations.

Note: Data are provisional

Appendix 2

Table B: Number of COVID-19 outbreaks in Ireland notified in Week 9 2021, by outbreak location and month of occurrence of first case, data up to midnight 06/03/2021, N=431. *Data source: CIDR*

Outbreak location	2020		2021			Unknown	Total
	Oct	Dec	Jan	Feb	Mar		
Childcare facility				8	1	1	10
Community outbreak				4			4
Extended family	1	2	15	18			36
Hospital				4		1	5
Not Specified			1				1
Nursing home			1	2			3
Other		1		1			2
Other healthcare service			3	7			10
Private house	1	36	66	199	4		306
Public house			1				1
Religious/Other ceremony		1	2	1			4
Residential institution			2	6		1	9
Retail outlet			1	4			5
Social gathering		4	2	3			9
Transport				3			3
Travel related				3			3
University/College				1			1
Workplace			1	16	2		19
Total	2	44	95	280	7	3	431

Note: Data are provisional

Appendix 3 Technical Notes

1. Data are based on statutory notifications and were extracted from the National Computerised Infectious Disease Reporting (CIDR) system. Data are provisional and subject to ongoing review, validation and update. As a result, figures in this report may differ from previously published figures.

2. For surveillance purposes, the following COVID-19 outbreak definition is used for notifying COVID-19 outbreaks/clusters:

Confirmed*

- **There is a cluster/outbreak, with two or more cases of laboratory confirmed COVID-19 infection regardless of symptom status. This includes cases with symptoms and cases who are asymptomatic.**

OR

- **There is a cluster/outbreak, with two or more cases of illness with symptoms consistent with COVID-19 infection (as per the COVID-19 case definition), and at least one person is a confirmed case of COVID-19.**

* From September 21st 2020, suspected COVID outbreaks should be reported with the disease category 'Acute Respiratory Infection (ARI)'. If one or more cases linked to the outbreak are subsequently confirmed as COVID-19, the ARI outbreak should be reclassified to being a COVID-19 outbreak. Outbreaks of suspected COVID-19 which were notified before September 21st 2020, and met the previous COVID-19 outbreak definition should remain as COVID-19 outbreaks on CIDR.

The COVID-19 case definition is detailed on the Health Protection Surveillance Centre (HPSC) website: <https://www.hpsc.ie/a-z/respiratory/coronavirus/novelcoronavirus/casedefinitions/>

3. This report includes confirmed and suspected COVID-19 outbreaks.

4. An "Open" or "Closed" outbreak is defined as an outbreak where the outbreak status is "Open" or "Closed" on CIDR. In order to declare an outbreak "Closed" the outbreak location should not have experienced any new cases of infection which meet the case definition for a period of 28 days (two incubation periods).

5. Outbreak type (family/general) indicates whether an outbreak is confined to a family (family outbreak) or affects members of more than one household (general outbreak).

6. The "range in number of cases" presented in Tables 2 to 7 is based on laboratory confirmed cases linked to an outbreak in CIDR. The priority is to notify outbreaks to CIDR in a timely fashion and, while every effort is made to link cases to outbreaks as quickly as possible, there can sometimes be a delay in linking cases to the outbreak. Ranges in number of cases that include "0" include outbreaks that currently have no linked cases. Data in CIDR are continuously reviewed and updated and this includes the identification and linking of outbreak-associated cases.

Note: Data are provisional