

# eDeposit Ireland

## **Epidemiology of COVID-19 in Ireland : report prepared by HPSC on 23/03/2020 for NPHE**

Item Type	report
Citation	Health Protection Surveillance Centre, 'Epidemiology of COVID-19 in Ireland : report prepared by HPSC on 23/03/2020 for NPHE', [report], Health Protection Surveillance Centre, 2020-03-23
Publisher	Health Protection Surveillance Centre
Rights	Y
Download date	2026-03-14 20:16:23
Link to Item	<a href="https://hdl.handle.net/20.500.14765/92154">https://hdl.handle.net/20.500.14765/92154</a>



# Epidemiology of COVID-19 in Ireland

Report prepared by HPSC on 23/03/2020 for NPHE

## Summary

This report includes data as of 23<sup>rd</sup> March 2020 13:05 for events created on CIDR up to midnight Saturday, 21<sup>st</sup> March, 2020

**Note: Data are provisional**

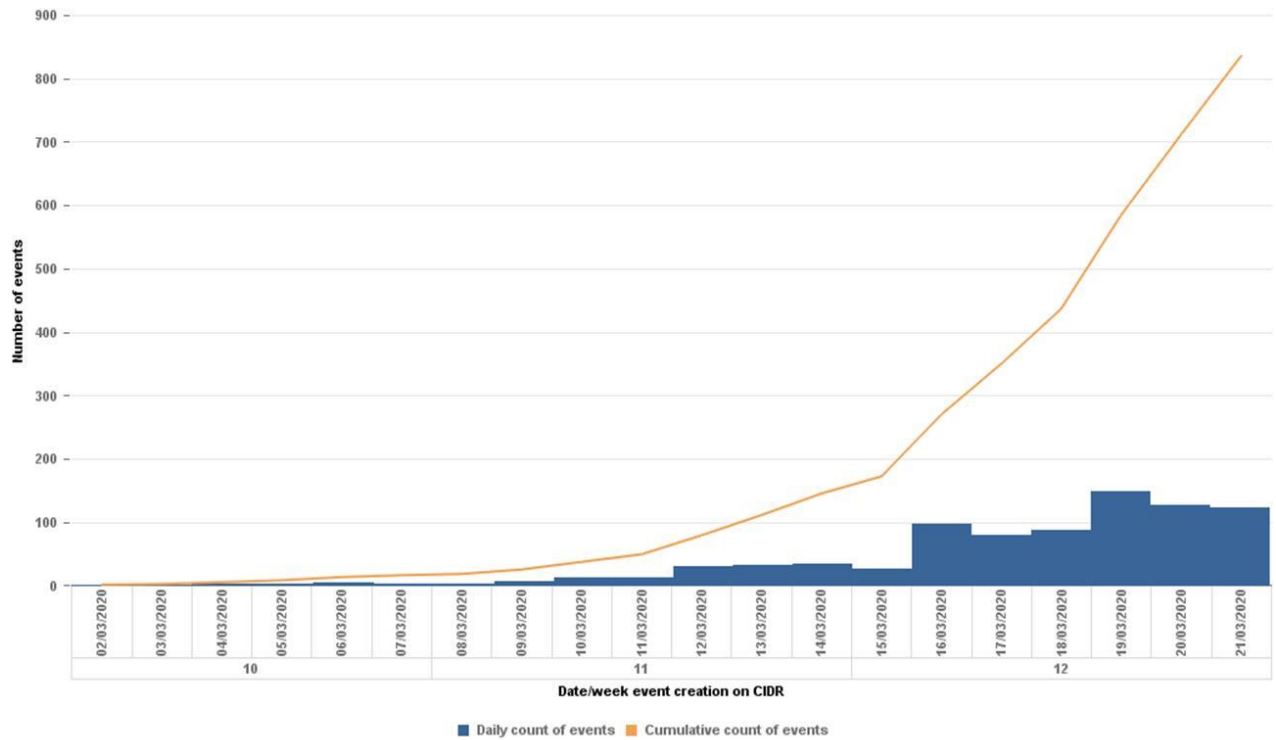
Total number of confirmed cases	836	
Number of new cases 21 <sup>st</sup> March	124	
Total number hospitalised	239	28.6%
Total number admitted to ICU	25	3.0%
Total number of deaths	6	
Case Fatality Ratio (CFR %)	0.7	
Total number of outbreaks/clusters	37	
Total number cases associated with clusters	210	25.1%
Total number of imported cases	185	22.1%
Number of cases in HCW	208	24.9%
Median age (years)	44	
Age range (years)	0-95	

### Confirmed cases

In total, 836 confirmed cases of COVID-19 were notified in Ireland **before midnight March 21<sup>st</sup> 2020**, with the first cases reported in Week 10 2020, week ending 07/03/2020 (Figure 1).

### Outbreaks/Clusters

Thirty seven outbreaks/clusters of COVID-19 were notified on CIDR **before midnight March 21<sup>st</sup> 2020**.



**Figure 1: Number and cumulative number of confirmed COVID-19 cases notified in Ireland to midnight March 21<sup>st</sup> 2020**

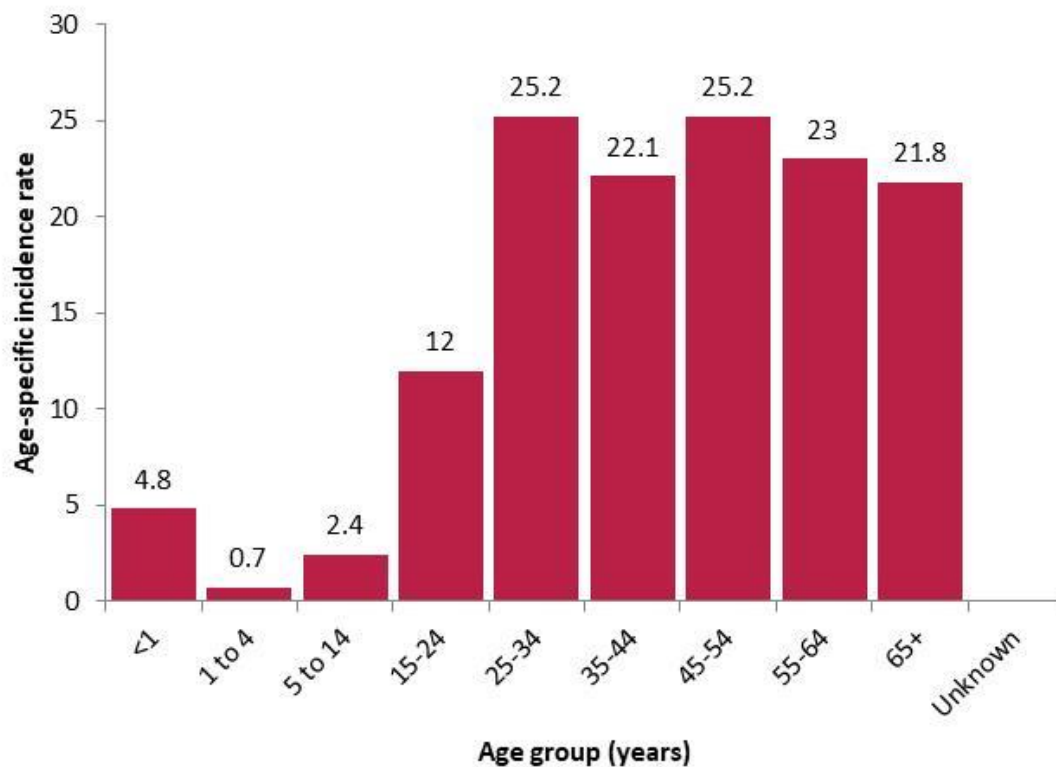
Data source: CIDR as of 23/03/2020 13:05

**Table 1: Characteristics of confirmed COVID-19 cases notified as of midnight March 21<sup>st</sup> 2020, Ireland**

	Number	Percent
<b>Total</b>	836	100
<b>Sex</b>		
Female	369	44.1
Male	460	55.0
Unknown	7	0.8
<b>Age group (years)</b>		
<1	3	0.4
1-4	2	0.2
5-14	16	1.9
15-24	69	8.3
25-34	166	19.6
35-44	165	19.7
45-54	158	18.9
55-64	117	14.0
65+	139	16.6
Unknown	1	0.4
<b>HSE area</b>		
HSE E	516	61.7
HSE M	39	4.7
HSE MW	44	5.3
HSE NE	32	3.8
HSE NW	17	2.0
HSE SE	32	3.8
HSE S	116	13.9
HSE W	40	4.8
<b>Country of Infection</b>		
Andorra	2	0.2
Austria	37	4.4
Bulgaria	1	0.1
Czech Republic	1	0.1
France	11	1.3
Ireland	543	65.0
Italy	60	7.2
Netherlands	2	0.2
Philippines	1	0.1
Portugal	2	0.2
Singapore	2	0.2
Spain	16	1.9
Sri Lanka	1	0.1
Sweden	1	0.1
Switzerland	7	0.8
United kingdom	39	4.7
United States	2	0.2
Unknown	8	1.0
Not specified	100	12.0

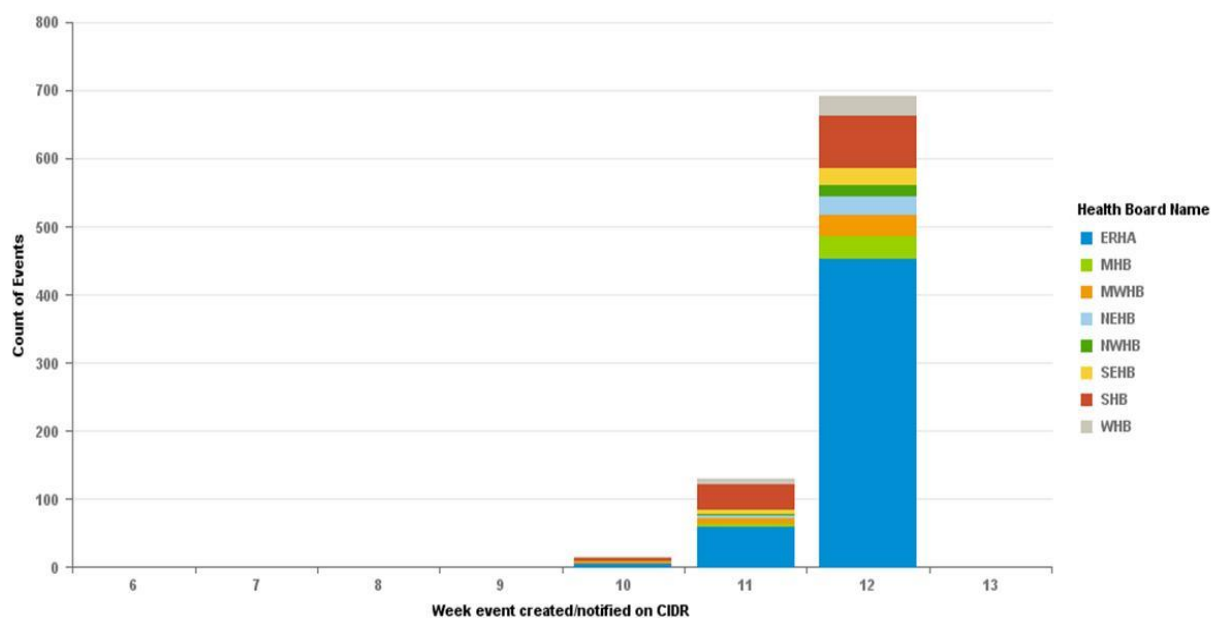
Data source: CIDR as of 23/03/2020 13:05

**Note: Data are provisional**



**Figure 2:** Age-specific incidence rates of confirmed cases of COVID-19 notified to midnight March 21<sup>st</sup> 2020, Ireland

Data source: CIDR as of 23/03/2020 13:05

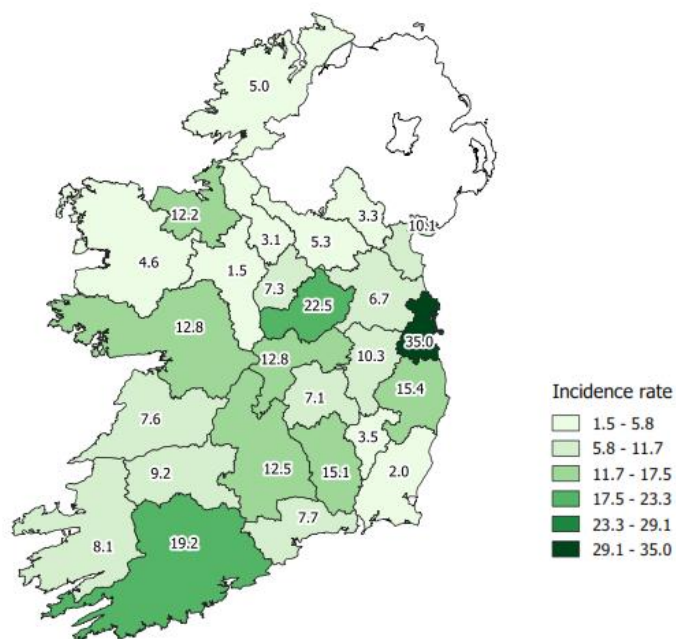


**Figure 3:** Confirmed cases of COVID-19 notified to midnight March 21<sup>st</sup> 2020, by HSE Area and week of notification

Data source: CIDR as of 23/03/2020 13:05

**Note: Data are provisional**

Cumulative incidence rates of confirmed cases of COVID-19 by county, Ireland



**Figure 4:** Cumulative incidence rates of confirmed cases of COVID-19 notified to midnight March 21<sup>st</sup> 2020 by county, Ireland

Data source: CIDR as of 23/03/2020 13:05

**Table 2:** Number of confirmed cases of COVID-19 notified to midnight March 21<sup>st</sup> 2020 by County

County Name	Count of Events	%
Carlow	2	0.2
Cavan	4	0.5
Clare	9	1.1
Cork	104	12.4
Donegal	8	1.0
Dublin	471	56.3
Galway	33	3.9
Kerry	12	1.4
Kildare	23	2.8
Kilkenny	15	1.8
Laois	6	0.7
Leitrim	1	0.1
Limerick	18	2.2
Longford	3	0.4
Louth	13	1.6
Mayo	6	0.7
Meath	13	1.6
Monaghan	2	0.2
Offaly	10	1.2
Roscommon	1	0.1
Sligo	8	1.0
Tipperary	20	2.4
Waterford	9	1.1
Westmeath	20	2.4
Wexford	3	0.4
Wicklow	22	2.6

Data source: CIDR as of 23/03/2020 13:05

**Note: Data are provisional**

**Table 3: Number of confirmed COVID-19 cases notified to midnight March 21<sup>st</sup> 2020 by transmission classification, Ireland**

Transmission classification*	Number of events	%
Community transmission	238	28.5
Possible community transmission	26	3.1
Local transmission	136	16.3
Possible local transmission	0	0
Travel abroad	183	21.9
Unknown	253	30.3

\* Transmission classification is based on country of infection as well as enhanced exposure data (international travel; close contact of a case) recorded in CIDR. The World Health Organization's (WHO) Definition of transmission classification is outlined in Appendix 1.

Data source: CIDR as of 23/03/2020 13:05

**Table 4: Number of confirmed cases of COVID-19 notified to midnight March 21<sup>st</sup> 2020 by age group and hospital, ICU and vital status, Ireland**

Age group (years)	Number hospitalised	% hospitalized	Number in ICU	% in ICU	Number died	Case fatality ratio (%)
<5	2	0.8	0	0	.	.
5-14	2	0.8	1	4.0	.	.
15-24	14	5.9	0	0	.	.
25-34	31	13.0	1	4.0	.	.
35-44	26	10.9	3	12.0	.	.
45-54	42	17.6	6	24.0	.	.
55-64	37	15.5	6	24.0	.	.
65+	85	35.6	8	32.0	.	.
<b>Total</b>	<b>239</b>	<b>100</b>	<b>25</b>	<b>100</b>	<b>6</b>	<b>0.7</b>

Data source: CIDR as of 23/03/2020 13:05

**Table 5: Number of confirmed cases of COVID-19 notified to midnight March 21<sup>st</sup> 2020 in healthcare workers by HSE-area and travel status**

HSE-area	Foreign travel	No foreign travel	Not specified	Total
E	25	91	12	128
M	3	11	0	14
MW	1	2	2	5
NE	2	1	0	3
NW	2	1	0	3
SE	1	0	2	3
S	13	17	3	33
W	8	10	1	19
<b>Total</b>	<b>55</b>	<b>133</b>	<b>20</b>	<b>208</b>

Data source: CIDR as of 23/03/2020 13:05

Of the 208 cases who were healthcare workers, 64% had no history of foreign travel in the 14 days prior to onset of symptoms.

**Note: Data are provisional**

**Table 6: Number of clusters/outbreaks COVID-19 notified to midnight March 21<sup>st</sup> 2020 by location and HSE-area**

Location	E	M	MW	NE	SE	S	W	Total
Travel related			2	4	1	2	2	11
Hospital	2	1		1		1	1	6
Extended family	1				3	1		5
Private house	1	1		1		1	3	7
Nursing home	4							4
Workplace	1			1	1			3
Not Specified						1		1
<b>Total</b>	<b>9</b>	<b>2</b>	<b>2</b>	<b>7</b>	<b>5</b>	<b>6</b>	<b>6</b>	<b>37</b>

Data source: CIDR as of 23/03/2020 13:05

## Acknowledgements

Sincere thanks is extended to all those who participated in the collection and reporting of data used in this report. This includes the notifying clinicians and staff in laboratories and Departments of Public Health.

### Report prepared by Epi Team, HPSC

#### Appendix 1: World Health Organization's (WHO) Definition of transmission classification

WHO definition of transmission classification is specified below:

- Community transmission is evidenced by the inability to relate confirmed cases through chains of transmission for a large number of cases, or by increasing positive tests through routine screening of sentinel samples.
- Local transmission indicates locations where the source of infection is within the reporting location.
- Imported cases only indicate locations where all cases have been acquired outside the location of reporting.

Unknown: Transmission is classified as 'unknown' due to incomplete data on CIDR.