

eDeposit Ireland

Monthly Weather Bulletin May 2001

Item Type	report
Publisher	Met Éireann
Rights	Y
Download date	2026-03-07 11:38:50
Link to Item	https://hdl.handle.net/20.500.14765/70017

Monthly Weather Bulletin

No. 181
MAY 2001

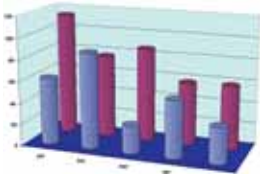


INSIDE

Wind & Elements	4
Marine & Pressure	5
Agmet /Lab.....	6
Diary	8
Rainfall	10
Temperature ...	12

Warmest May on record at Clones

Sunshine	14
World Weather..	15
The Weather of Spring	16



Dry year so far at Malin Head

Produced by Met Éireann,
Glasnevin Hill, Dublin 9.
Annual subscription £48



For more information-
tel: +353-1-8064260
fax: +353-1-8064216
climat.enquiries@met.ie
www.met.ie/climate

Notes on the tables and map showing location of stations appear in each January issue

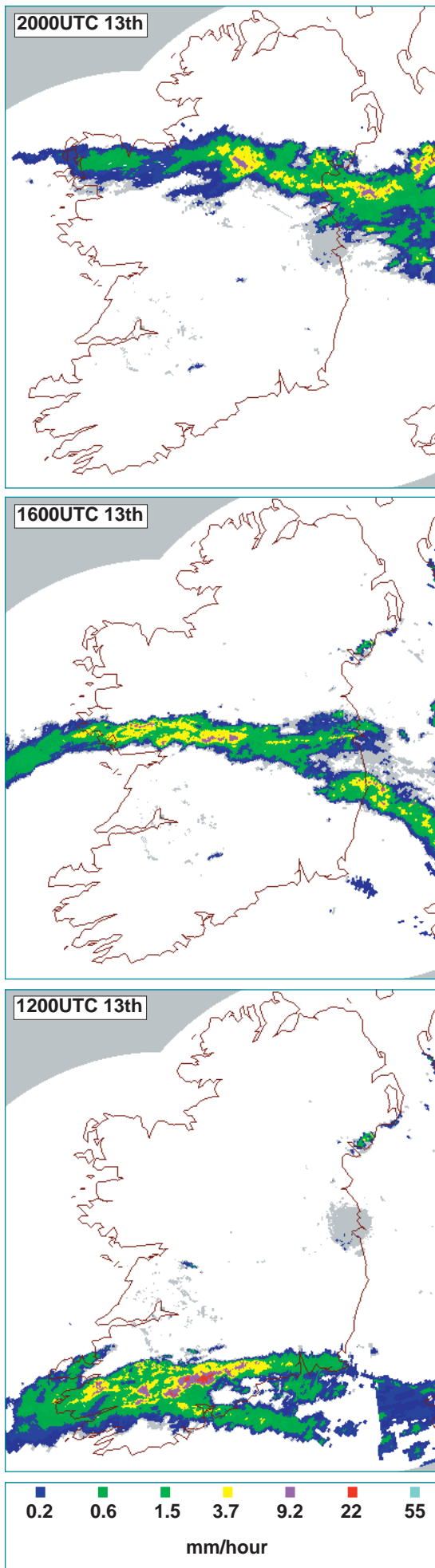


Weather conditions were ideal at the beginning of the month for the launch in Howth, Co. Dublin, of the second buoy in Ireland's Marine Data Buoy Network; this buoy is now positioned in the Irish Sea

WARM AFTER COOL START- DRY AND SUNNY

Summary: High pressure over or near Ireland during much of May gave long spells of dry, sunny weather but there were some wet days also around the middle and again at the end of the month. After a cool opening week with fairly widespread ground frost, the remainder of the month was warm and mean temperatures ended up over a degree above normal generally and over two degrees higher than the May normal at a couple of stations. One of these was Clones, where the mean temperature of

12.3°C was its highest for May in fifty years of record. Mean maximum temperatures were particularly high; they were between two and three degrees above normal except at coastal stations, where sea breezes kept daytime temperatures lower on several days. Rainfall was below normal everywhere and was mostly confined to the periods 13th to 17th and 25th to 30th; over half the monthly total at many stations fell in the period 15th to 16th. Sunshine totals were between 5% and 40%



Right
A narrow band of frontal rain moved steadily northwards over the country during the afternoon of the 13th.

above normal everywhere but at most stations it was not quite as sunny as May of last year; an exception was Cork Airport, which had its sunniest May on record. Over 10 hours sunshine were recorded on several days during the first half of the month and particularly in the period 21st to 24th, when almost all stations had between 12 and 15 hours sunshine each day.

1st to 12th: Anticyclones, or areas of high pressure, were the dominant influence, giving dry and sunny weather almost everywhere. There were a few showers at the beginning and end of the period, some of which were heavy in parts of the west during the 11th and 12th. Light, mainly northerly winds at first veered easterly by the end of the period. Temperatures were below normal at first with widespread ground frost, becoming milder after the 9th.

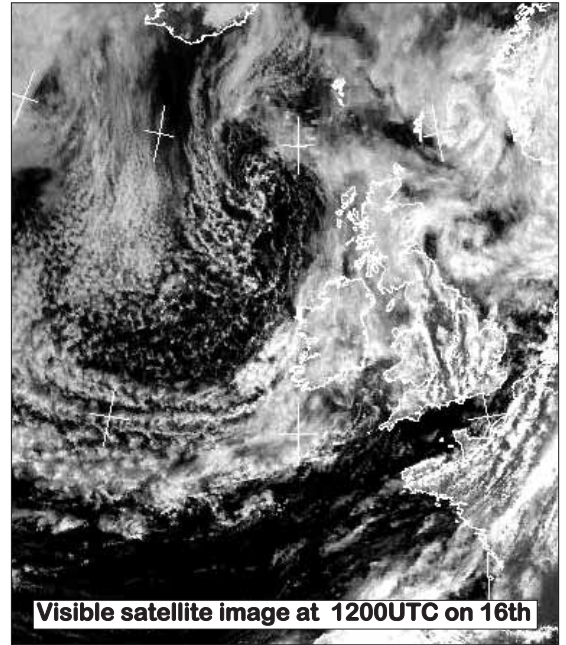
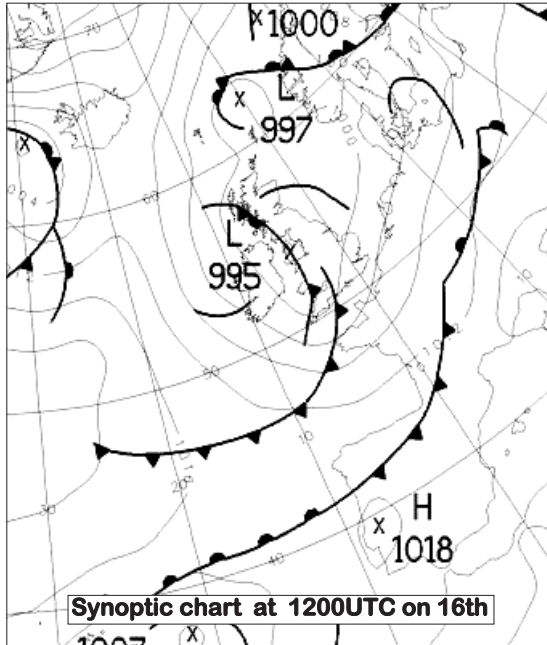
13th to 18th: Frontal systems over the country gave spells of rain or showers, heavy in many places on the 15th and 16th, as a depression moved slowly northeastwards across Ireland. Easterly winds at first backed northwesterly and strengthened, bringing a drop in temperatures.

19th to 24th: High pressure became re-established, giving dry, warm and very sunny weather with light, mainly southerly winds.

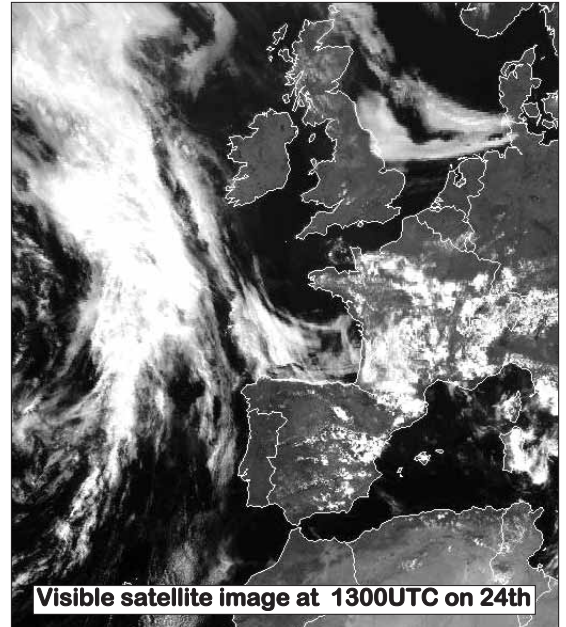
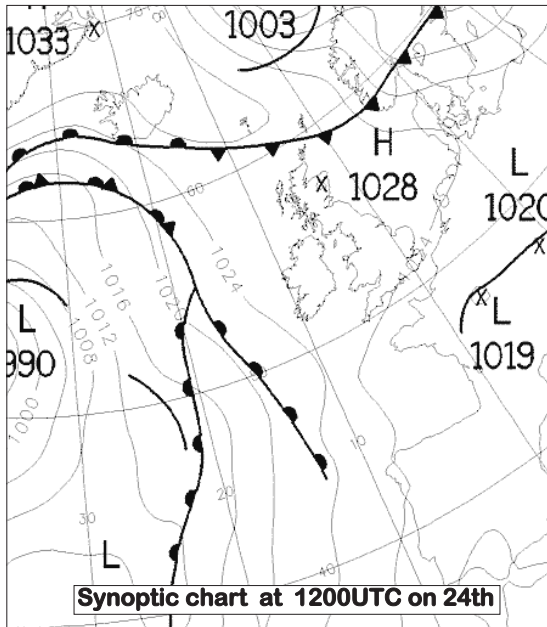
25th to 31st: Unsettled, with Atlantic frontal systems bringing rain or showers each day, although amounts were generally small. Warm and humid southwesterly winds at first during the period were replaced by cooler northwesterlies after the 29th; becoming sunnier through the period.

Mean windspeeds for the month were below normal everywhere, varying between 5 and 10 knots (*6 and 12m.p.h.*) everywhere. Malin Head recorded the highest gust, 58 knots (*67m.p.h.*), on the 28th. Fog was fairly widespread on the 12th and 26th, while there were reports of thunder on the 10th, 12th, 13th and 15th.

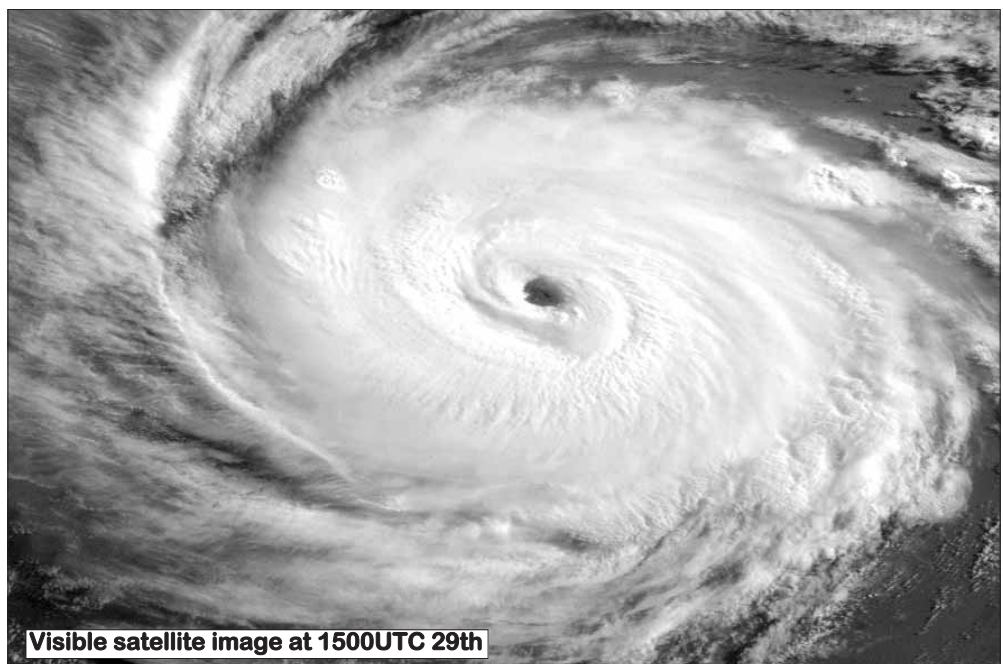
13th to 18th:
 After dry weather early in the month, most areas received some heavy rain around mid-May. Between the 15th and 16th, a slow-moving depression over Ireland gave falls of between 15 and 30mm over most of the country.



19th - 24th:
 Clear skies associated with high pressure centred to the east of Ireland gave dry, warm and very sunny weather. The satellite image shows the approaching Atlantic frontal system, which heralded more unsettled conditions for the last week of the month.



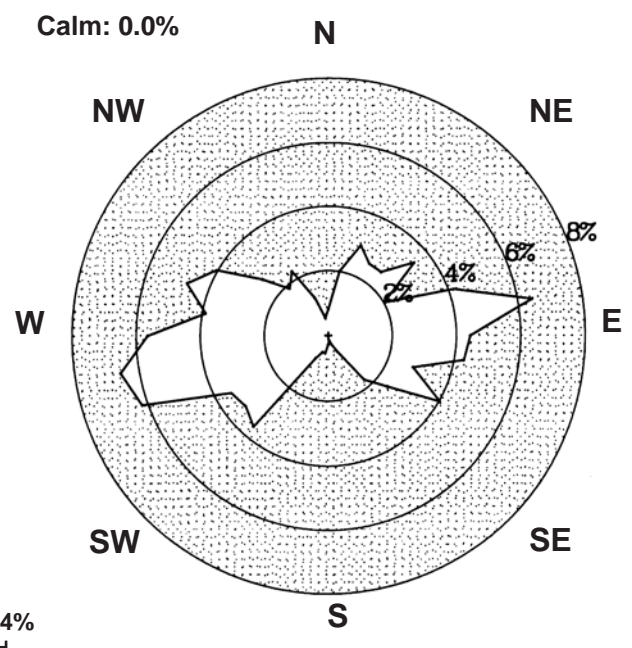
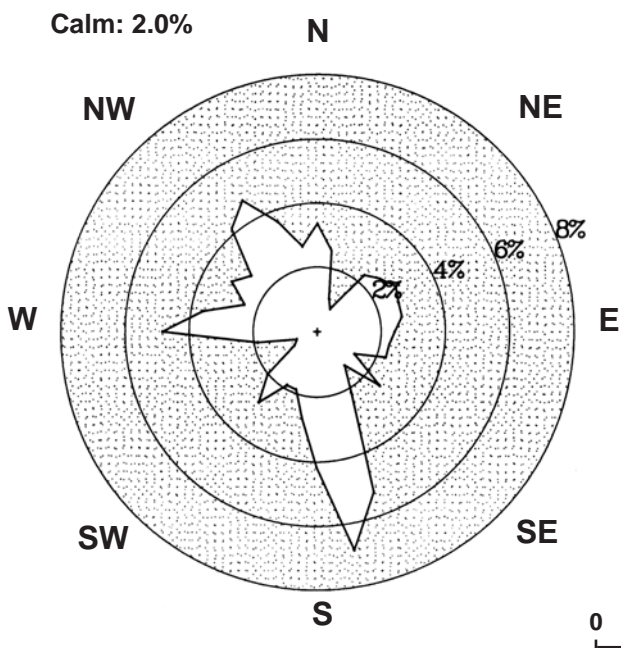
Right:
 A GOES-10 satellite image of Hurricane Apolph, as it lay off the western coast of Mexico in the eastern Pacific. The hurricane reached category 4 status on the 28th, with a central pressure of 960hPa and mean windspeeds of 108 knots (125m.p.h.). Although some heavy rain fell along the Mexican coast near Acapulco, the track of the hurricane offshore prevented any serious damage over populated areas. (picture NOAA)



County / Station	WIND (KNOTS)						ELEMENTS								
	Mean speed	Max. 10-min. mean dir.	Max. 10-min. mean speed	Max. 10-min. mean date/hour	Max. Gust dir.	Max. Gust speed	Max. Gust date/time	Days with gales	Days with gale gusts	Hours with gale gusts	Snow	Snow Lying	Hail	Thunder	Fog
CO. CLARE SHANNON AIRPORT	7.1	250°	30	28/14	250°	38	28/1348	0	1	4	0	0	0	0	3
CO. CORK CORK AIRPORT	8.2	320°	24	16/17	090°	35	13/0918	0	4	4	0	0	0	0	13
					320°	35	16/1644								
CO. DONEGAL MALIN HEAD	9.7	240°	37	28/16	240°	58	28/1559	1	6	21	0	0	0	0	2
CO. DUBLIN CASEMENT AERODROME	7.0	250°	33	28/16	240°	46	28/1417	0	1	7	0	0	0	0	0
DUBLIN AIRPORT	7.7	250°	31	28/17	250°	40	28/1717	0	2	6	0	0	0	0	0
CO. KERRY VALENTIA OBSERVATORY	6.8	340°	23	16/13	100°	37	13/1102	0	2	2	0	0	0	0	0
		210°	23	28/09											
CO. KILKENNY KILKENNY	5.6	240°	24	28/16	240°	34	28/1532	0	1	2		0			2
CO. MAYO BELMULLET	8.6	200°	34	28/13	200°	48	28/1230	1	4	18	0	0	0	0	1
CONNAUGHT AIRPORT	8.0	250°	27	28/15	330°	40	16/1213	0	3	14	0	0	0	0	10
					210°	40	28/1201								
CO. MONAGHAN CLONES	6.3	260°	22	28/17	240°	36	28/1529	0	1	3		0			0
CO. OFFALY BIRR	5.5	240°	23	28/15	240°	37	28/1333	0	1	2		0			1
CO. WESTMEATH MULLINGAR II	5.5	250°	21	28/15	230°	35	28/1424	0	1	1		0			2
CO. WEXFORD ROSSLARE	8.7	050°	25	1/16	220°	39	28/1553	0	3	9	0	0	0	0	8

Valentia Observatory

Dublin Airport

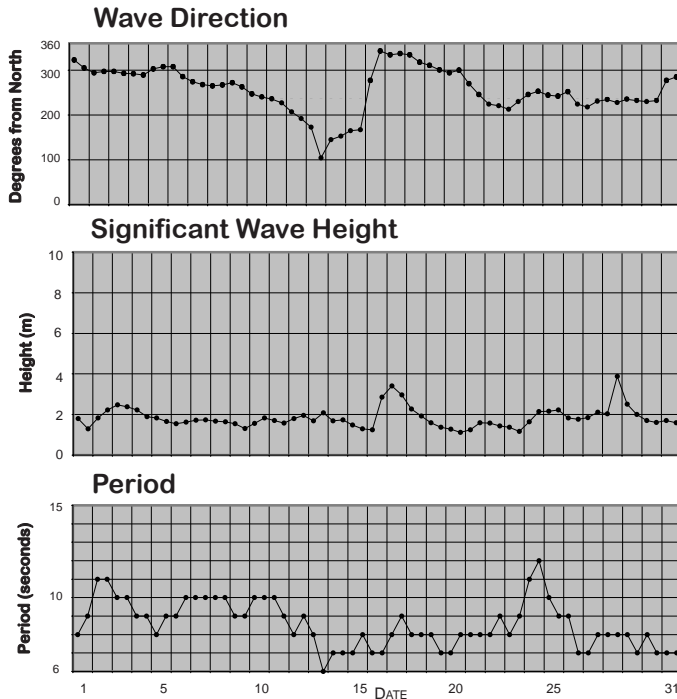


0 1 2 3 4%

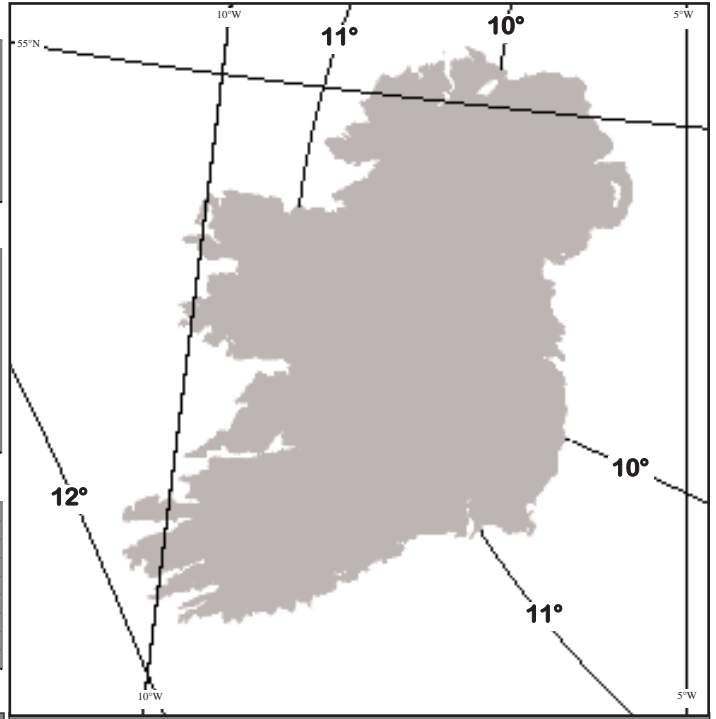
FREQUENCY OF WIND DIRECTION

SEA TEMPERATURES

Sea temperatures rose by around two degrees during the month; while near normal near northern coasts, they were around a degree higher than normal in the south. They ranged from under 10°C off the northeast coast to almost 12°C in the extreme southwest around mid-month. At Malin Head the mean sea temperature for the month was 10.3°C, compared with its May normal of 10.0°C.



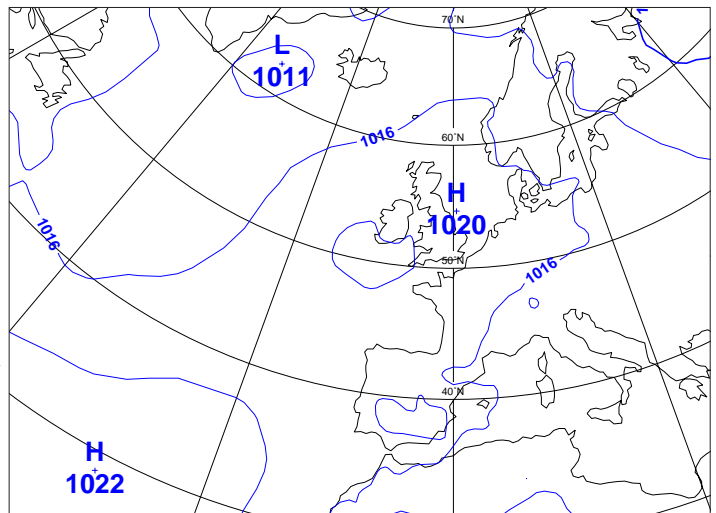
Wave conditions at 52.5°N, 12°W based on WAM model



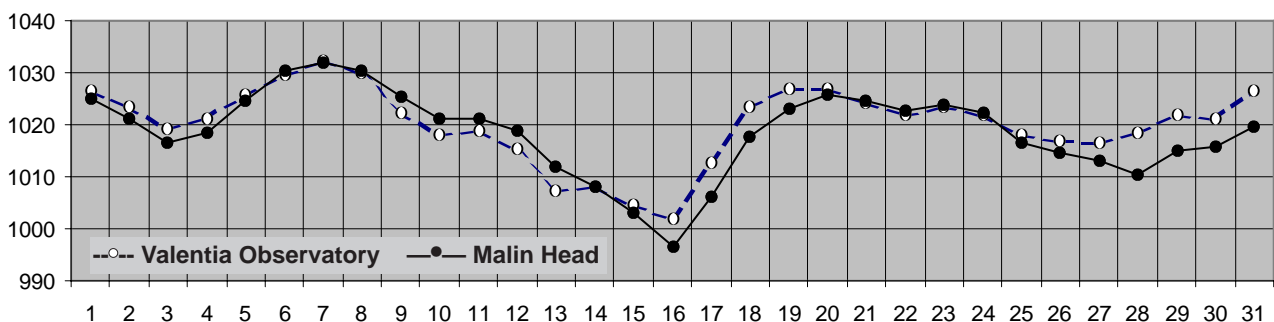
Sea Temperatures (°C) around mid-month

MEAN ATMOSPHERIC PRESSURE

Mean sea level pressure values for the month were above normal everywhere. They were almost uniform over the country, being close to 1020hPa everywhere, or around 5hPa above the normal for May. Anticyclonic weather dominated much of the month, with the highest pressure values recorded between the 6th and 8th. The highest value, 1033.7hPa, was measured at Valentia Observatory on both the 7th and 8th. Depressions over or near the country brought pressure values below normal around mid-month; the lowest pressure, 974.8hPa, was recorded at Malin Head, Dublin Airport and Casement Aerodrome on the 6th.

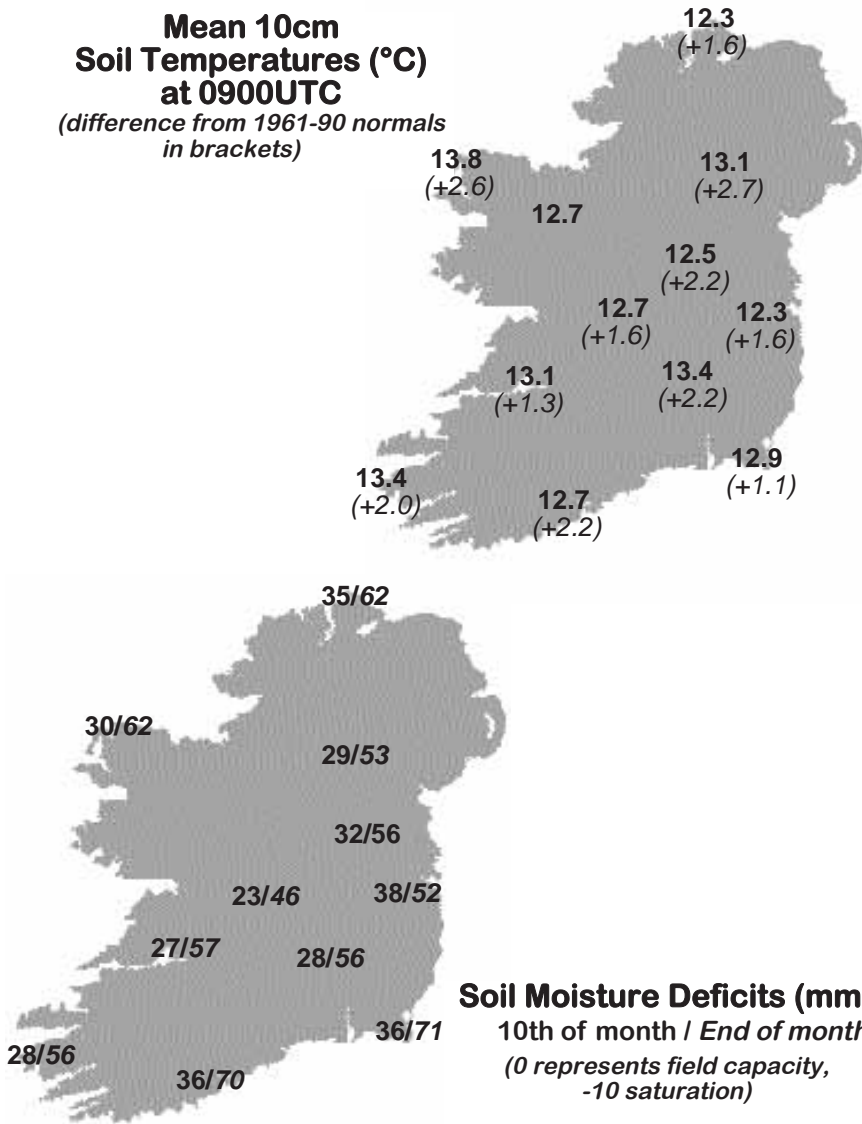


The above map is based on monthly means of 1200 UTC values



Mean daily M.S.L. pressure (hPa)

Mean 10cm Soil Temperatures (°C) at 0900UTC
(difference from 1961-90 normals in brackets)

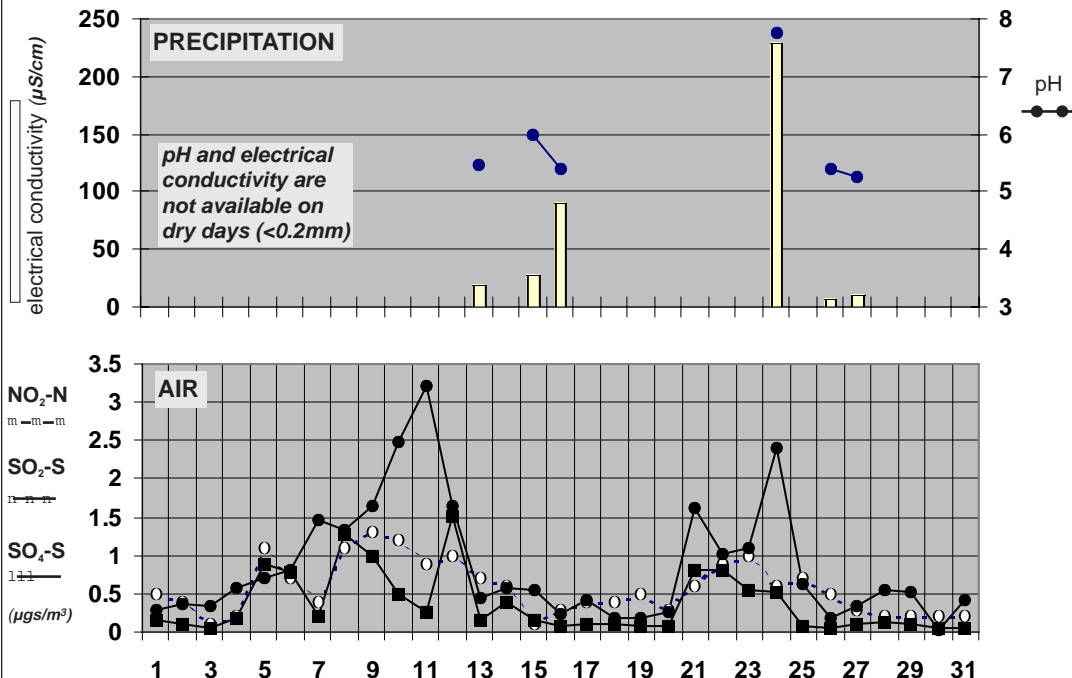


Soil Temperatures at 0900UTC

County/Station	°C		
	10cm	20cm	30cm
CO. CLARE			
SHANNON AIRPORT	13.1	13.3	13.4
CARRON	12.1		12.7
CO. CORK			
FERMOY (MOORE PARK)	13.0	12.5	12.9
CORK AIRPORT	12.7	12.3	13.9
SHERKIN ISLAND	13.1		13.5
BALLINCURRIG (PEAFIELD)	11.9	11.2	11.9
CO. DONEGAL			
MALIN HEAD	12.3	12.2	12.2
CO. DUBLIN			
DUBLIN AIRPORT	11.6	11.7	11.9
CASEMENT AERODROME	12.3	12.4	12.4
CO. KERRY			
VALENTIA OBSERVATORY	13.4	13.5	13.8
CO. KILKENNY			
KILKENNY	13.4	13.6	14.0
CO. LEITRIM			
BALLINAMORE	11.8	12.0	12.3
CO. LIMERICK			
MOUNT RUSSELL	11.4	12.3	
CO. LOUTH			
ARDEE (BOHARNAMOE)	12.3	12.4	12.2
CO. MAYO			
BELMULLET	13.8	14.4	15.2
STRAIDE	12.6		
CONNAUGHT AIRPORT	12.7	10.7	11.9
CO. MEATH			
WARRENSTOWN	12.3	12.4	13.2
CO. MONAGHAN			
CLONES	13.1	12.4	12.6
CO. OFFALY			
BIRR	12.7	13.2	13.9
CO. TIPPERARY			
FETHARD (PARSONSHILL)	11.4	12.0	
CO. WATERFORD			
DUNGARVAN (CARRIGLEA)		12.8	13.2
CO. WESTMEATH			
MULLINGAR II	12.5	12.7	13.6
CO. WEXFORD			
JOHNSTOWN CASTLE	12.8	12.4	12.9
ROSSLARE	12.9	12.9	13.6
CLONROCHE	10.3	12.0	12.3
JOHN F. KENNEDY PARK	13.0	12.8	13.3

Soil Moisture Deficits (mm)
10th of month / End of month
(0 represents field capacity, -10 saturation)

Chemical Analysis of Precipitation and Air Samples at Valentia Observatory



Acid rain occurs when pollutants combine with moisture in the air to form sulphuric or nitric acid. pH is the simplest way of measuring the acidity of precipitation. Usually pH of 7.00 is considered neutral but this is not the case in rainfall samples. Pure water in the atmosphere has an equilibrium pH value of 5.65 at 20°C owing to carbon dioxide in the air dissolving to form carbonic acid. Any value below pH 5.65 is considered acid while any value above is considered alkaline.

Sulphur dioxide and sulphate in air contribute to the formation of sulphuric acid; nitrate in air contributes to the formation of nitric acid.

Conductivity measures the total ion activity in the rainfall, i.e. the higher the conductivity the greater the number of ions present.

10-DAY VALUES FOR SELECTED AGROMETEOROLOGICAL STATIONS		RAINFALL				TEMPERATURE										SUNSHINE		P.E. (Penman) (mm)					
Station	period	amount	% of average	rain days	wet days	mean max.	mean min.	mean daily	diff. from average	lowest min.	date	days with air frost	degree days > 4.4°C	degree days > 10.0°C	lowest "grass-min."	date	days with ground frost	mean 10cm at 0900h	mean 30cm at 0900h	total no. of hours	% of average	mean wind speed (m/s) 2m agl.	P.E. (Penman) (mm)
Fermoy	11-20	7.5	-	4	3	17.0	7.3	12.2	-	2.4	17	0	78	29	-0.7	17	1	13.2	12.9	-	-	2.4	-
	21-end	22.2	-	4	4	19.3	8.2	13.8	-	2.7	23	0	104	49	-0.3	24	1	15.3	14.8	-	-	2.2	-
	month	30.5	45	9	7	17.3	6.2	11.8	1.3	-0.4	7	1	234	93	-2.6	7	6	13.0	12.9	-	-	2.2	-
Co. Donegal	1-10	5.5	-	3	1	15.3	3.7	9.5	-	-0.6	1	1	56	18	-4.1	1	7	-	-	-	-	-	-
Glenties	11-20	35.5	-	6	6	16.7	8.7	12.7	-	3.1	17	0	83	34	-1.1	17	1	-	-	-	-	-	-
	21-end	19.9	-	7	4	19.1	9.5	14.3	-	6.6	22	0	109	52	0.4	21	0	-	-	-	-	-	-
	month	60.9	67	16	11	17.1	7.4	12.3	2.3	-0.6	1	1	248	103	-4.1	1	8	-	-	-	-	-	-
Co. Kerry	1-10	0.3	-	1	0	16.4	4.5	10.5	-	0.4	1	0	62	20	-0.7	1	1	-	-	75.7	-	-	-
Ardfert	11-20	28.6	-	6	4	18.0	7.1	12.6	-	3.3	17	0	82	34	1.7	17	0	-	-	66.2	-	-	-
	21-end	20.3	-	7	5	19.5	9.9	14.7	-	6.2	21	0	113	55	4.3	23	0	-	-	85.7	-	-	-
	month	49.2	-	14	9	18.0	7.3	12.7	2.1	0.4	1	0	258	109	-0.7	1	1	-	-	227.6	-	-	-
Co. Leitrim	1-10	0.1	-	0	0	15.4	3.0	9.2	-	-0.2	7	1	53	15	0.9	10	0	8.8	10.2	71.8	-	0.8	-
Ballinamore	11-20	34.2	-	7	4	16.0	8.2	12.1	-	4.9	17	0	77	26	0.9	20	0	12.3	12.5	49.6	-	1.1	-
	21-end	22.1	-	8	4	19.3	8.2	13.8	-	3.6	23	0	103	47	0.9	31	0	14.2	14.1	78.5	-	0.7	-
	month	56.4	72	15	8	17.0	6.5	11.8	1.6	-0.2	7	1	233	89	0.9	31	0	11.8	12.3	199.9	130	0.9	31
Co. Louth	1-10	2.2	-	2	2	15.8	2.8	9.3	-	-0.6	7	1	55	17	-5.4	7	8	9.5	9.8	-	-	-	-
Ardee	11-20	45.2	-	6	4	16.5	7.7	12.1	-	3.6	17	0	78	28	-1.1	18	1	12.3	12.0	-	-	-	-
	21-end	10.4	-	7	3	20.3	9.0	14.7	-	4.2	23	0	113	56	-1.1	23	1	14.8	14.6	-	-	-	-
	month	57.8	96	15	9	17.6	6.6	12.1	2.1	-0.6	7	1	246	101	-5.4	7	10	12.3	12.2	-	-	-	-
Co. Waterford	1-10	1.1	-	1	1	16.0	4.8	10.4	-	1.0	7	0	61	18	-1.5	7	1	-	11.1	87.8	-	1.4	-
Dungarvan	11-20	9.7	-	4	3	16.8	8.3	12.6	-	3.2	17	0	81	31	1.5	17	0	-	13.1	51.5	-	1.5	-
	21-end	15.3	-	4	3	19.0	9.0	14.0	-	3.5	23	0	106	50	1.5	23	0	-	15.1	95.7	-	1.8	-
	month	26.1	-	9	7	17.3	7.4	12.4	1.6	1.0	7	0	248	99	-1.5	7	1	-	13.2	235.0	126	1.6	82
Co. Wexford	1-10	0.1	-	0	0	13.7	4.9	9.3	-	2.9	8	0	50	10	-1.5	8	1	10.4	11.0	86.0	-	0.6	-
Johnstown Castle	11-20	12.9	-	4	3	15.7	8.3	12.0	-	4.3	17	0	76	25	1.4	17	0	12.4	12.5	30.4	-	0.7	-
	21-end	9.9	-	4	2	17.5	10.0	13.8	-	7.3	21	0	103	44	4.8	31	0	15.3	14.9	80.4	-	1.0	-
	month	22.9	36	8	5	15.7	7.8	11.8	1.5	2.9	8	0	228	79	-1.5	8	1	12.8	12.9	196.8	106	0.8	69

MEASURED POTENTIAL EVAPOTRANSPIRATION (P.E.) AND SOIL MOISTURE

SEE BACK PAGE OF JANUARY ISSUE FOR NOTES ON THE DATA

County/Station	Period	P.E. (mm) Amount	Soil Moisture (mm) Deficit	Accumulated Deficit	Surplus
Co. Dublin	1-10	37.9	34	34	-
Kinsealy	11-20	24.2	-	18	16
	21-end	41.2	25	43	-
	month	103.3			
Co. Kerry	1-10	20.9	21	21	-
Valentia Obs.	11-20	20.0	11	32	-
	21-end	23.7	-	31	1
	month	64.6			
Co. Leitrim	1-10	12.3	12	12	-
Ballinamore	11-20	18.5	-	0	16
	21-end	25.7	4	4	-
	month	56.5			
Co. Wexford	1-10	19.6	20	20	-
Johnstown Castle	11-20	9.5	-	17	3
	21-end	18.7	5	22	-
	month	47.8			

County/Station	GLOBAL SOLAR RADIATION (MJ/sq. m)				P.E. (Penman) total for
	10-day totals 1-10	11-20	21-end	total for month	
Co. Donegal					
Malin Head	183.70	162.58	219.89	566.17	86
Co. Dublin					
Dublin Airport	222.06	150.72	223.95	596.73	90
Co. Kerry					
Valentia Obs.	184.86	198.61	216.52	599.76	89
Co. Kilkenny					
Kilkenny	188.62	146.36	227.65	562.63	84
Co. Mayo					
Belmullet	199.08	198.58	217.61	615.27	84
Co. Monaghan					
Clones	177.41	147.86	207.17	532.44	87
Co. Offaly					
Birr	185.67	144.40	216.42	546.49	78

Tuesday 1st: A large anticyclone lay to the southwest of Ireland with a weak frontal system off the northwest coast. Slight to sharp frost in inland areas at first. A sunny day in most places, but with some light rain or showers in the northwest. Light to moderate north to northwesterly winds. Temperatures dropped quickly after dark with mainly clear skies.

Rainfall: nil or trace

Temperature: max. 14°C to 16°C, min. zero to 6°C; ground temperatures -2°C to -5°C inland

Sunshine: 10 to 14 hours generally; 4 hours at Belmullet

Wednesday 2nd: Pressure remained high over the country. A frontal trough off the northwest coast edged southeastwards during the evening. Good bright or sunny spells in most areas except the northwest and north, where cloud and drizzle developed during the morning. During the early evening, rain and drizzle became more widespread with just the extreme south remaining dry. Winds generally light, west or northwesterly in direction.

Rainfall: nil generally; 2.4mm at Birr

Temperature: max. 13°C to 18°C, highest in east, min. 1°C to 8°C, lowest in east; ground temperatures down to -4°C in Kilkenny

Sunshine: 2 to 7 hours in western half, 10 to 12 hours in east and midlands

Thursday 3rd: A moderate northerly airflow covered Ireland as pressure rose from the west. Mist and fog patches overnight with outbreaks of rain, mainly in the east, clearing to give a mostly dry, cool and sunny day with scattered showers. Light to moderate north to northwesterly winds.

Rainfall: nil or trace generally, 2mm at Dublin Airport

Temperature: max. 10°C to 14°C, min. 3°C to 8°C; ground temperatures zero to -2°C inland

Sunshine: 7 to 11 hours generally, 5 hours at Shannon Airport

Friday 4th: A weak rainbelt crossed Ireland as high pressure approached from the Atlantic. Cold overnight away from Atlantic coasts with a slight to sharp ground frost. The odd shower also, mainly in the northwest. The day was partly cloudy with sunny spells and occasional showers. Winds were mostly light northwesterly but were moderate at times on south and west coasts.

Rainfall: nil or trace generally, 2mm at Kilkenny

Temperature: max. 10°C to 14°C, min. zero to 8°C, mildest in southwest; ground temperatures down to -4°C in Clones

Sunshine: 1 to 8 hours, sunniest in southeast

Saturday 5th: Pressure remained high over Ireland. Some slight frost and mist or fog overnight, clearing quickly. A dry day generally with long periods of sunshine in places, but more cloudy with some light drizzle or rain over the western half of the country. Cool. Light north to northwesterly winds.

Rainfall: nil

Temperature: max. 12°C to 16°C, min. 6°C to 8°C generally; slight ground frost at Casement Aerodrome

Sunshine: 5 to 11 hours generally, trace at Shannon Airport

Sunday 6th: Ireland lay within a large anticyclone, extending from the Azores to western Norway. A dry day in most areas except for a short period of light drizzle in the northwest. Sunny periods in many areas with light variable winds. Ground and air frost in midland and eastern areas after nightfall.

Rainfall: nil

Temperature: max. 9°C to 12°C in north and east, 14°C to 18°C otherwise, min. 2°C to 8°C, mildest in southeast; ground temperatures -2°C to -5°C inland

Sunshine: 4 to 9 hours generally, 1 hour at Malin Head

Monday 7th: The anticyclone centred to the west maintained light variable winds over the area. Cool and dry overnight with ground frost in many areas and some fog patches. Frost and any fog cleared quickly to give a warm, dry day with prolonged sunshine almost everywhere.

Rainfall: nil

Temperature: max. 11°C to 17°C, coolest in north and southeast, min. 2°C to -1°C inland; ground temperatures -3°C to -6°C inland

Sunshine: 13 to 15 hours generally

Tuesday 8th: High pressure maintained generally light variable winds over the area throughout. Cool and dry overnight with mist and fog in places and ground frost in midlands and eastern areas. Frost and any fog cleared quickly to give another dry warm day with prolonged sunshine almost everywhere.

Rainfall: nil

Temperature: max. 11°C to 19°C, coolest in north, min. 2°C to 6°C, -1°C at

Casement Aerodrome; ground temperatures -1°C to -4°C inland

Sunshine: 11 to 14 hours

Wednesday 9th: Anticyclone centred to the northeast. Dry and sunny at first but showers in the south by evening and some outbreaks of rain or drizzle in parts of Ulster. Light winds at first freshened from an easterly direction.

Rainfall: nil to 0.3mm

Temperature: max. 12°C to 17°C, min. 3°C to 9°C, mildest in southeast; ground temperatures zero to -2°C inland

Sunshine: 4 to 14 hours, sunniest in northern half

Thursday 10th: The anticyclone centred north of Scotland maintained a fresh and unstable east or northeasterly airflow over the country. Rain, drizzle and fog in places at first, but mainly dry with good sunny spells in many areas for the remainder of the day. Some thundery activity in the northeast later.

Rainfall: nil generally, 2.5mm at Malin Head

Temperature: max. 13°C at Rosslare and Malin Head, 17°C to 22°C otherwise, min. 5°C to 10°C; ground temperatures between -1°C and 8°C

Sunshine: 3 to 10 hours, sunniest in northwest

Friday 11th: Ireland lay between an anticyclone to the northeast and a depression to the southwest. Mild and humid overnight with mist and fog patches, leading to a warm day with hazy sunshine; mostly dry except for some light rain and scattered showers, some thundery, in the midlands and west. Light easterly winds were fresh and gusty at times on northern coasts.

Rainfall: nil generally, 1mm at Birr

Temperature: max. 15°C to 22°C, min. 6°C to 11°C; ground temperatures between 2°C and 10°C

Sunshine: less than 2 hours generally, 6 to 9 hours in parts of west and south

Saturday 12th: A light to moderate easterly airflow covered the area throughout. Dry and mild overnight with widespread mist and fog, clearing during the morning to give a fine, very warm day with hazy sunshine everywhere. Isolated showers, some thundery, developed in western areas during the afternoon and evening.

Rainfall: nil or trace

Temperature: max. 14°C to 15°C at Rosslare and Malin Head, 19°C to 24°C otherwise, min. 7°C to 11°C; ground temperatures 4°C to 11°C

Sunshine: 8 to 13 hours

Sunday 13th: A warm easterly airflow covered Ireland. A cold front moved slowly northwards during the day, bringing rain to southern areas by midday; this became slow-moving over the north midlands during the evening.

Rainfall: dry in north and northwest, 1 to 5mm generally

Temperature: max. 14°C to 23°C, warmest in northwest, min. 8°C to 12°C; ground temperatures 2° to 9°C

Sunshine: 4 to 12 hours, sunniest in northern half

Monday 14th: Slack pressure across Ireland with a light easterly airflow. Rain or showers in the northwest and north. Fog in the midlands and southeast for a time, but generally sunny except in the far north.

Rainfall: 0 to 2mm

Temperature: max. 13°C to 19°C, min. 6°C to 10°C; ground temperatures 1°C to 3°C inland

Sunshine: 8 to 12 hours generally, 1 hour at Malin Head

Tuesday 15th: A depression to the southwest with a slow-moving front across the area. Widespread rain, some heavy, except in parts of the south, where it was dry with sunshine for a time. Mist or fog in many places. Winds were light variable.

Rainfall: dry in south and southeast, 5 to 15mm elsewhere

Temperature: max. 10°C to 16°C, min. 7°C to 10°C; ground temperatures 4°C to 9°C

Sunshine: nil or trace generally, 7 to 10 hours in south and southwest

Wednesday 16th: Ireland was under the influence of a depression which drifted slowly northeastwards during the period. Its associated frontal systems brought rain and drizzle to all areas during the night, persisting along the east coast until the evening, but turning showery elsewhere. Some sunshine in the north and northwest, but very cool for the time of year. North to northwesterly winds increased in strength during the day.

Rainfall: 2 to 4mm in south and west, 8 to 20mm elsewhere

Temperature: max. 9°C to 13°C, min. 3°C to 7°C; ground temperatures between 1° and 6°C

Sunshine: nil to 2 hours generally, 6 hours at Belmullet

Thursday 17th: Low pressure centred in the Irish Sea moved slowly eastwards. Rain in eastern areas at first with scattered showers further west; this rain died out during the early morning and thereafter there were scattered showers countrywide, with a few bright or sunny spells. Light to moderate northwest to north winds declined and backed westerly by evening.

Rainfall: nil to 3mm

Temperature: max. 11°C to 15°C, min. 3°C to 8°C, mildest in north; ground temperatures between 1°C and 6°C

Sunshine: 3 to 11 hours, sunniest in southwest

Friday 18th: A stabilising west to northwest airflow covered the area as pressure increased from the south. Mostly dry apart from some isolated rain or showers, mainly near Atlantic coasts. Some sunny spells generally. Winds mainly light, between southwesterly and northwesterly.

Rainfall: nil to 2mm

Temperature: max. 13°C to 16°C, min. 5°C to 9°C; ground temperatures down to -1°C in Kilkenny

Sunshine: 2 to 6 hours

Saturday 19th: A westerly airflow covered Ireland. Weak frontal troughs crossed the north and west. Mostly cloudy with showers, particularly in the west, but amounts were small. Long sunny spells in the southwest and north. Winds fell light or calm by evening.

Rainfall: nil to 1mm

Temperature: max. 13°C to 16°C, min. 8°C to 10°C; ground temperatures between 4° and 9°C

Sunshine: 1 to 3 hours generally, 5 to 11 hours in north and west

Sunday 20th: An anticyclone to the south of Ireland moved northeastwards over Britain. Mild and humid overnight with isolated showers in the west in the morning. A dry day otherwise with long sunny spells except in the east and midlands. Winds were mostly light and variable but moderate southwesterly at times on northern coasts.

Rainfall: nil or trace

Temperature: max. 15°C to 18°C, min. 6°C to 10°C; ground temperatures zero to 2°C inland

Sunshine: less than 1 hour near east coast, 2 to 6 hours generally, 10 hours at Rosslare

Monday 21st: Ireland's weather was dominated by an anticyclone in the North Sea. Generally mild and humid overnight with some mist or fog patches but cooler in some inland areas with a slight touch of ground frost. A dry, sunny day with afternoon temperatures a few degrees above normal. Mostly light winds between southeasterly and southwesterly in direction.

Rainfall: nil

Temperature: max. 17°C to 22°C, 10°C to 12°C in south, min. 4°C to 10°C; ground temperatures down to -1°C in Kilkenny

Sunshine: 9 to 15 hours

Tuesday 22nd: The anticyclone centred over the North Sea was almost stationary and maintained an east to southeast airflow over the country. A clear night with a few fog patches around dawn, followed by long periods of sunshine during the day and becoming warm in the afternoon.

Rainfall: nil

Temperature: max. 15°C in Rosslare, 18°C to 23°C generally, min. 6°C to 11°C, ground temperatures between 1°C and 7°C

Sunshine: 11 to 15 hours

Wednesday 23rd: A ridge of high pressure which extended from a high in the North Sea covered Ireland. Cool overnight with some mist or fog patches and a slight touch of ground frost in some midland areas. Mist lingered near northern coasts during the day but elsewhere it was another dry, warm and sunny day. Winds were mostly light and southeasterly or variable in direction, moderate at times on northern coasts.

Rainfall: nil

Temperature: max. 16°C to 23°C, warmest in midlands, min. 4°C to 11°C, mildest in southeast; ground temperatures down to -1°C in Kilkenny

Sunshine: 13 to 15 hours

Thursday 24th: A ridge of high pressure declined as frontal troughs approached from the Atlantic. Some mist or fog overnight, clearing to give a dry, warm and sunny day. Fog returned to some areas again late in the evening. Light to moderate, mainly southeasterly winds.

Rainfall: nil

Temperature: max. 16°C to 24°C, min. 5°C to 11°C; ground temperatures down

to -1°C in Kilkenny

Sunshine: 11 to 14 hours

Friday 25th: A southerly airflow over Ireland as a frontal trough moved slowly eastwards over the country. Patchy light rain in some areas during the night and early morning, becoming more extensive during the day with a few heavier bursts. Cloudy and mild, with light southerly or southeasterly winds.

Rainfall: dry in southeast, 2 to 5mm generally

Temperature: max. 14°C to 19°C, coolest in southwest, min 9°C to 13°C; ground temperatures 5°C to 13°C

Sunshine: less than 1 hour generally, 3 hours at Rosslare and Belmullet

Saturday 26th: Ireland remained in a southerly airflow. A frontal trough cleared the southeast coast during the night. Mist and fog in many areas during the night and early morning, followed by a warm day but with patches of light rain or drizzle. Most sunshine over the northern half of the country.

Rainfall: nil at Belmullet, 4 to 7mm generally

Temperature: max. 15°C to 22°C, warmest in east, min 8°C to 13°C; ground temperatures 4°C to 13°C

Sunshine: 1 to 4 hours generally, 10 hours at Malin Head

Sunday 27th: Ireland lay in a south to southwest airflow. Mild and humid at first with outbreaks of rain or drizzle and some mist or fog patches, becoming mostly dry by afternoon with short sunny spells and temperatures above normal for the time of year. Light rain or drizzle and mist and fog patches returned after dark. Southerly winds were moderate and sometimes gusty on north and northwest coasts.

Rainfall: 1 to 4 mm generally, 9mm at Valentia Observatory

Temperature: max. 16°C to 21°C, min. 11°C to 14°C; ground temperatures above 10°C everywhere

Sunshine: 1 to 4 hours in most places

Monday 28th: A frontal wave crossed Ireland overnight. Very mild and humid at first with outbreaks of rain and drizzle. This cleared away northeastwards by around midday and the afternoon was bright, warm and breezy with sunny spells and temperatures above normal for the time of year. Remaining dry and mild in the evening. Winds started off light and variable but became fresh to strong and gusty southwesterly as the front pushed northwards, up to gale force on exposed coasts, before easing off during the evening.

Rainfall: 1 to 7mm

Temperature: max. 16°C to 22°C, warmest in east, min. 10°C to 14°C; ground temperatures between 5°C and 13°C

Sunshine: 5 to 11 hours, sunniest in east and southwest

Tuesday 29th: Ireland lay in a southwesterly airflow, as an occlusion persisted to the north of Ulster. Mainly dry apart from some light showers in the north and northwest. Long sunny spells in many areas, particularly the east and southeast. Generally warm with temperatures well up to normal. Winds light to moderate southwesterly, fresher along the north and northwest coast.

Rainfall: nil generally, 3mm at Belmullet

Temperature: max. 15°C to 20°C, min. 9°C to 13°C; ground temperatures between 6° and 12°C

Sunshine: 0 to 4 hours in parts of west and southwest, 9 to 15 hours generally

Wednesday 30th: A showery trough moved eastwards across the area, followed by a cool west to northwesterly airflow. Showers in all areas except the extreme south and southeast, persistent and locally heavy in the northwest. Sunny spells also between the showers, especially in the south. Cooler than recent days with daytime temperatures near or below normal. Winds were mostly light westerly or northwesterly, gusty near showers.

Rainfall: nil to 1mm in east and south, 2 to 7mm generally, 9 to 11mm in northwest

Temperature: max. 14°C to 18°C, min. 8°C to 11°C; ground temperatures between 3°C and 9°C

Sunshine: 4 to 10 hours, sunniest in south

Thursday 31st: A cool westerly airflow over Ireland as a frontal system approached the northwest. Showers continued for a time over the northern half of the country and were generally light. Mostly cloudy, but with long sunny spells in the extreme south and southeast. Cool, especially in the north and northwest. Moderate westerly winds were gusty near northern coasts.

Rainfall: nil to 2mm

Temperature: max. 12°C to 17°C, coolest in northwest, min. 7°C to 10°C; ground temperatures 3°C to 8°C

Sunshine: 1 to 8 hours, sunniest in southeast

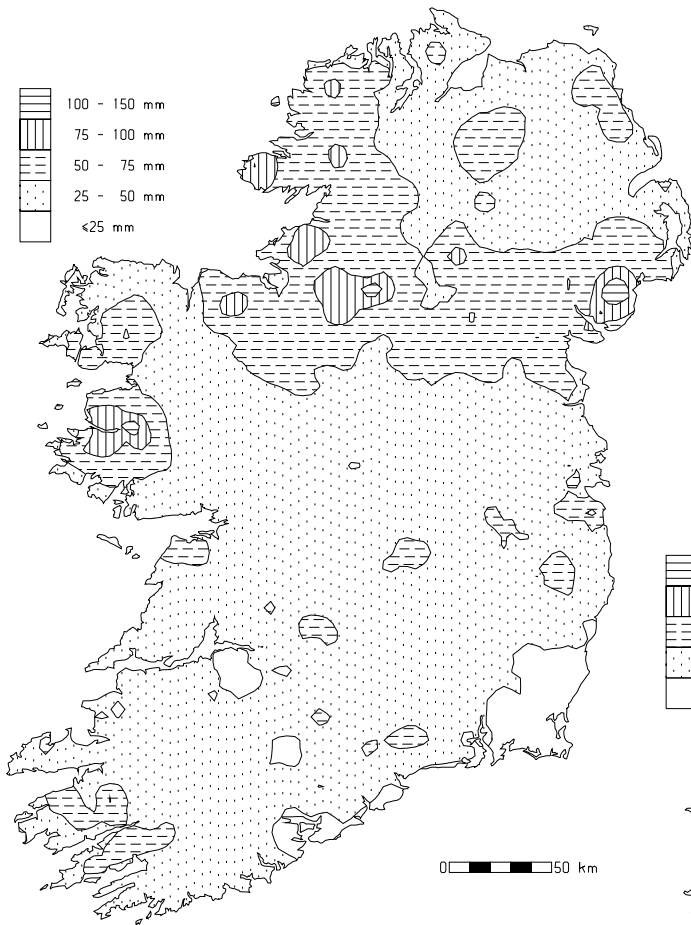
Very dry in southern half

Rainfall was below normal everywhere except for a few stations in the east and north. Totals ranged from 20mm at Waterford (Tycor) to 75mm at Maam Valley, Co. Galway, with percentage of normal values between 27% at Cork Airport and 105% at Dublin (Merrion Square). At a number of stations it was the driest May for between 7 and 10 years.

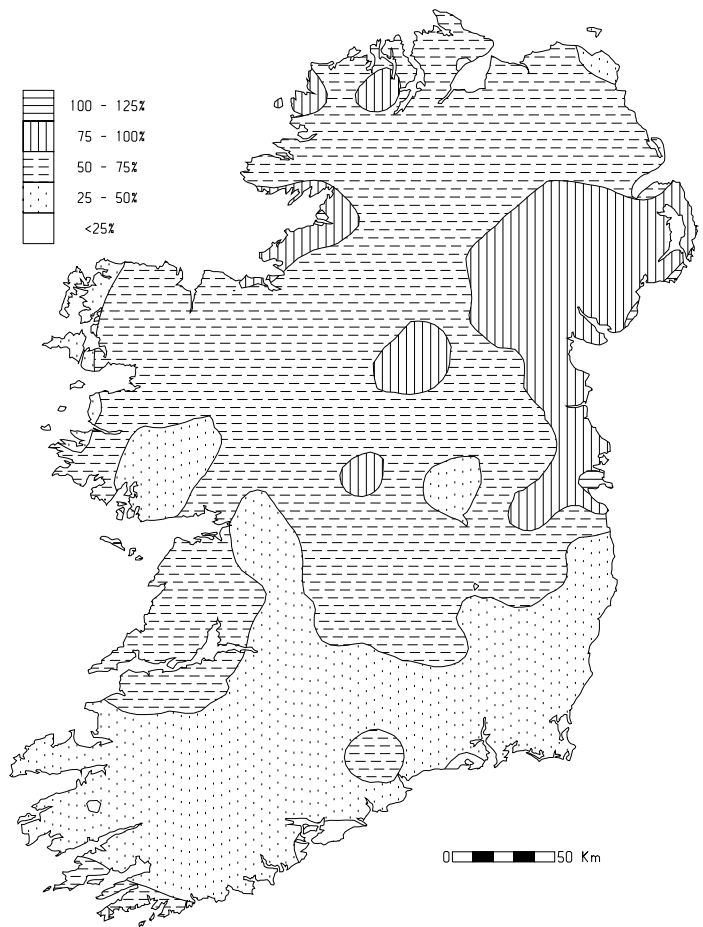
The early part of the month was dry, with less than 5mm of rain measured during the period 1st to 12th; little or no rain was recorded also between 18th and 23rd. There were between 7 and 11 wetdays (*days with 1.0mm or more of rainfall*) during the month at most stations compared with the normal range for May of 12 to 17. By far the wettest weather of the month at most stations was in the periods 15th to 16th and 26th to 27th. Ballincurrig (Peafield), Co. Cork, measured the highest daily fall of the month, 30.4mm on the 15th, a day when both hail and thunder were observed there.

<i>County/ Station</i>	Total Amount (mm)	% of 1961-90 average	Most in a day / date		Number of Raindays ($>0.2\text{mm}$)	Wetdays ($\geq 1\text{mm}$)
CO. CLARE						
SHANNON AIRPORT	34.5	58	8.5	15	10	7
CARRON	51.4	57	18.6	15	14	8
CO. CORK						
FERMOY (MOORE PARK)	30.5	45	16.9	26	9	7
CORK AIRPORT	22.7	27	6.8	26	9	7
SHERKIN ISLAND	41.8	58	15.3	26	6	6
BALLINCURRIG (PEAFIELD)	54.1		30.4	15	7	7
CO. DONEGAL						
MALIN HEAD	34.7	59	16.4	15	15	7
BALLYSHANNON (CATHLEEN'S FALL)	69.9	103	17.4	15	16	13
GLENTIES	60.9	67	15.9	15	16	11
CO. DUBLIN						
DUBLIN (PHOENIX PARK)	57.1	100	19.0	16	10	9
DUBLIN AIRPORT	49.5		18.0	16	12	8
CASEMENT AERODROME	47.8	82	19.1	16	11	7
DUBLIN (MERRION SQUARE)	56.9	105	21.1	16	13	8
CO. GALWAY						
GALWAY (UNIV. COLL.)	41.2	55	13.5	15	8	7
MAAM VALLEY	74.5		24.3	29	14	11
CONNEMARA NATIONAL PARK	42.9	44	12.4	15	14	11
BALLYGAR	41.8	60	10.4	15	14	7
CO. KERRY						
VALENTIA OBSERVATORY	34.8	39	10.5	27	14	7
ARDFERT (LISCAHANE)	49.2		13.8	14	14	9
CO. KILKENNY						
KILKENNY	34.5	55	7.3	16	10	9
CO. LETTRIM						
BALLINAMORE	56.4	72	13.4	15	15	8
CO. LIMERICK						
MOUNT RUSSELL	40.7		10.3	26	14	9
CO. LOUTH						
ARDEE (BOHARNAMOE)	57.8	96	18.2	16	15	9
CO. MAYO						
BELMULLET	27.1	40	8.0	29	14	10
STRAIDE	44.6	59	16.8	29	12	6
CONNAUGHT AIRPORT	51.3		15.5	15	16	9
CO. MEATH						
WARRENTOWN	40.4	64	18.0	16	11	7
CO. MONAGHAN						
CLONES	48.0	71	12.9	15	15	9
CO. OFFALY						
BIRR	40.0	65	8.2	15	15	11
DERRYGREENAGH	28.1	43	7.6	16	9	6
CO. SLIGO						
ARDTARMON	62.2		22.5	15	11	8
CO. TIPPERARY						
FETHARD (PARSONSHILL)	32.9		8.3	16 26	10	7
CO. WATERFORD						
WATERFORD (TYCOR)	20.1	29	4.8	16	10	7
DUNGARVAN (CARRIGLEA)	26.1		8.9	26	9	7
CO. WESTMEATH						
MULLINGAR II	40.6	57	7.4	15	13	8
CO. WEXFORD						
JOHNSTOWN CASTLE	22.9	36	7.7	16	8	5
ROSSLARE	19.8	36	7.5	16	7	4
CLONROCHE	25.3	32	7.4	30	9	6
JOHN F. KENNEDY PARK	21.4	30	7.2	26	9	8

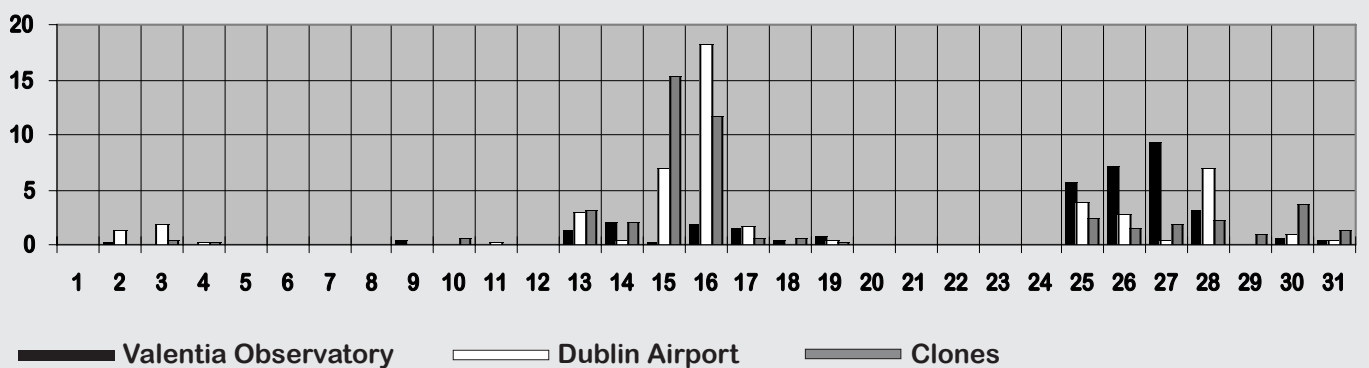
Total rainfall (mm)



Percentage of normal rainfall



Daily 0-24h rainfall values (mm)

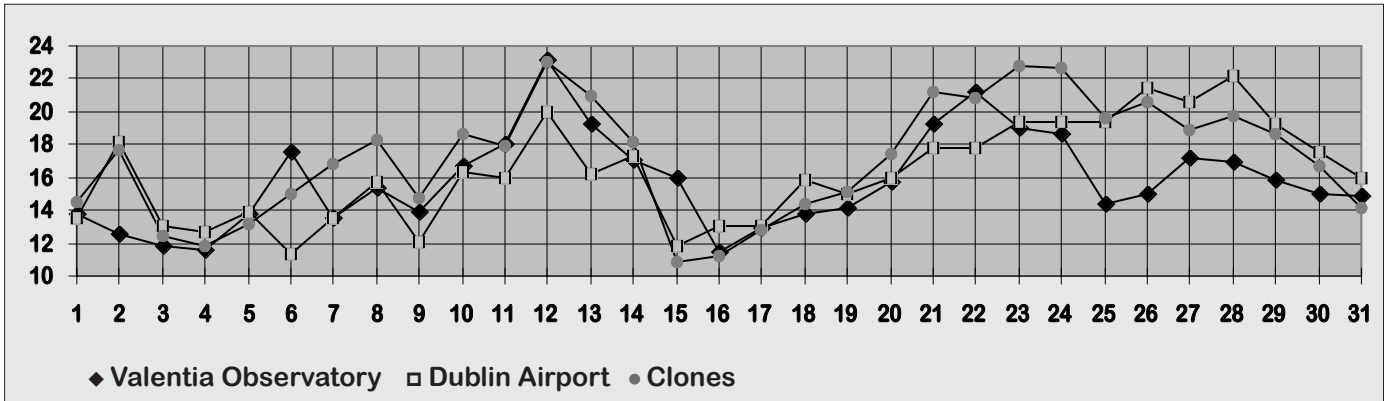


Warmest May on record at Clones

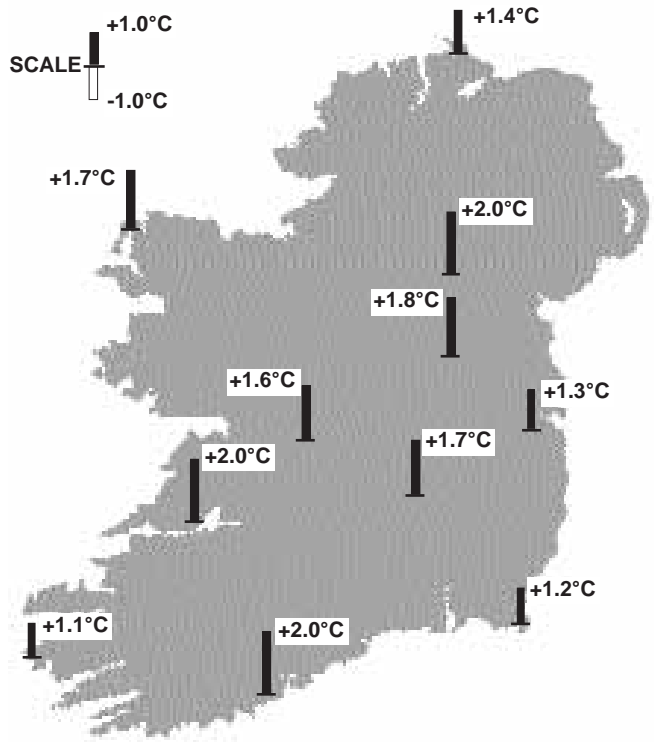
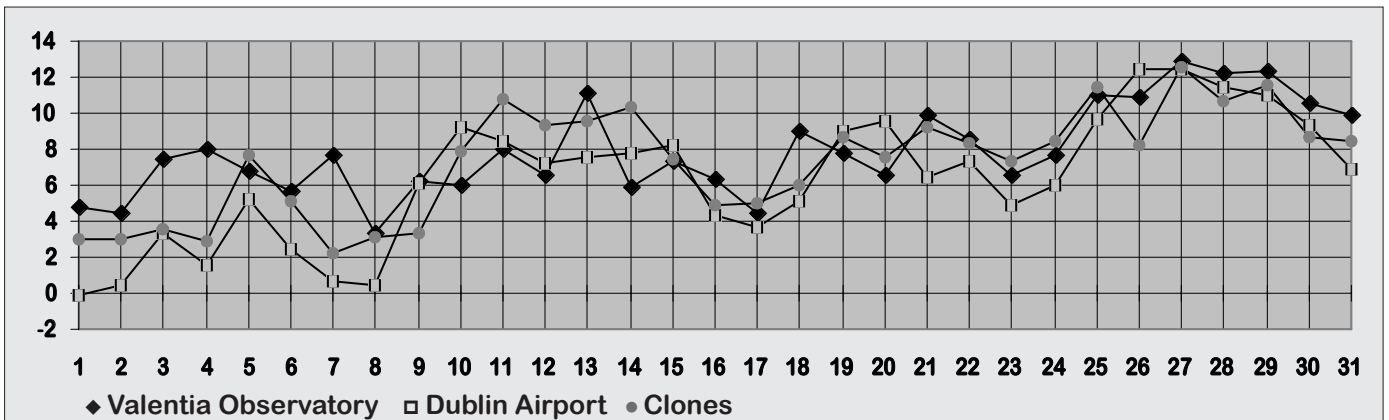
Despite a relatively cool start to May, it turned out to be a warm month overall, with mean temperatures between one and two degrees above normal almost everywhere. They ranged from 11.5°C at both Malin Head and Dublin Airport to 13.5°C at Shannon Airport. It was the warmest May for between 5 and 11 years at several stations and the warmest at Clones since records began there in 1951.

Mean maximum temperatures for the month were particularly high; they were over two degrees above the normal for May at most stations and up to four degrees above normal at Mullingar. The second half of the month was very warm, with daytime temperatures rising above 20°C at most stations during the period 21st to 28th. Derrygreenagh, Co. Offaly, measured the highest temperature of the month, 24.6°C on the 24th, the highest May temperature at the station since 1990. The early part of the month was cool, however, with frequent ground frost at inland stations; here there were between 7 and 11 ground frosts compared with the normal number for May of 6 or 7. The lowest air

Daily 0-24h maximum temperatures (°C)



Daily 0-24h minimum temperatures (°C)



Mean Temperature
(difference from 1961-90 normals)

temperature, -1.4°C, was recorded at Straide, Co. Mayo, on the 9th, while the lowest grass minimum temperature, -6.0°C, was measured at both Kilkenny and Derrygreenagh on the 7th.

TEMPERATURE

13

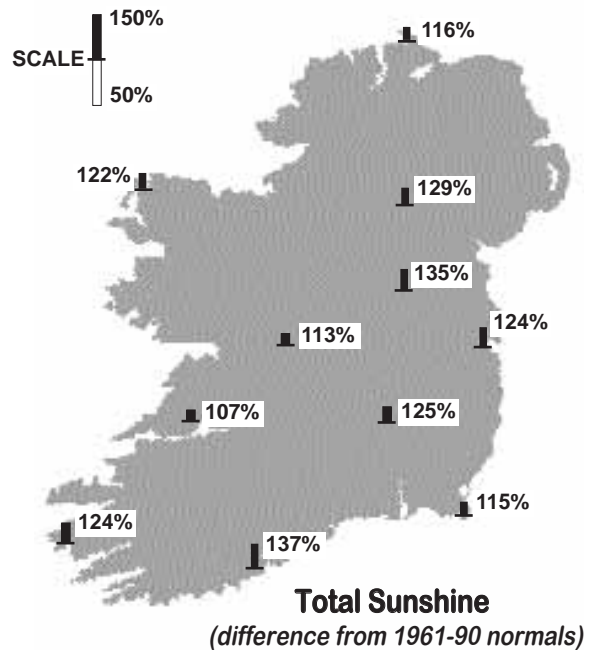
County/ Station	°C											
	Mean max.	Mean min.	Mean/ deviation from 1961-90 average		Highest max./date	Lowest min./date		Lowest grass min./date		Days with air frost ground frost		
CO. CLARE												
SHANNON AIRPORT	18.1	8.9	13.5	2.0	24.0	12	3.6	1	-5.4	1	0	8
CARRON	16.3	7.3	11.8	1.8	22.2	12	2.1	1 17	-3.6	1	0	10
CO. CORK												
FERMOY (MOORE PARK)	17.3	6.2	11.8	1.3	21.6	23	-0.4	7	-2.6	7	1	6
CORK AIRPORT	16.4	8.2	12.3	2.0	21.0	23	2.9	17	-3.0	7	0	1
SHERKIN ISLAND	15.4	8.8	12.1	1.1	18.4	12 23	5.0	7	3.3	8	0	0
BALLINCURRIG (PEAFIELD)	16.6	6.5	11.6		21.1	12	1.1	7	-1.6	7	0	2
CO. DONEGAL												
MALIN HEAD	14.3	8.7	11.5	1.4	22.3	22	3.7	7	2.2	7	0	0
BALLYSHANNON (CATHLEEN'S FALL)	16.3	8.5	12.4	1.9	24.1	24	2.4	1			0	
GLENTIES	17.1	7.4	12.3	2.3	24.0	24	-0.6	1	-4.1	1	1	8
CO. DUBLIN												
DUBLIN (PHOENIX PARK)	17.4	6.7	12.1	1.7	23.1	28	-0.1	7	-4.4	7 8	1	8
DUBLIN AIRPORT	16.3	6.7	11.5		22.2	28	-0.1	1	-3.4	1	1	5
CASEMENT AERODROME	16.8	6.6	11.7	1.3	21.8	28	-1.0	8	-4.6	7	3	6
DUBLIN (MERRION SQUARE)	16.6	9.4	13.0	1.4	23.4	28	3.7	17			0	
CO. GALWAY												
GALWAY (UNIV. COLL.)				not	available							
MAAM VALLEY	17.1	8.1	12.6		23.2	24	2.6	17	0.1	17	0	0
CONNEMARA NATIONAL PARK	16.5	7.9	12.2	1.6	23.4	13	1.5	17			0	
BALLYGAR	17.8	7.0	12.4		24.0	24	0.9	1	-1.0	7	0	2
CO. KERRY												
VALENTIA OBSERVATORY	15.8	8.4	12.1	1.1	23.2	12	3.3	8	0.9	8	0	0
ARDFERT (LISCAHANE)	18.0	7.3	12.7	2.1	23.2	12	0.4	1	-0.7	1	0	1
CO. KILKENNY												
KILKENNY	17.6	6.8	12.2	1.7	23.2	12 24	0.3	7	-6.0	7	0	11
CO. LEITRIM												
BALLINAMORE	17.0	6.5	11.8	1.6	23.8	24	-0.2	7			1	
CO. LIMERICK												
MOUNT RUSSELL	16.6	7.5	12.1		22.9	23	2.0	17	-2.8	1	0	5
CO. LOUTH												
ARDEE (BOHARNAMOE)	17.6	6.6	12.1	2.1	22.5	28	-0.6	7	-5.4	1 7	1	10
CO. MAYO												
BELMULLET	16.0	8.4	12.2	1.7	23.1	13	3.1	1 17	0.1	1	0	0
STRAIDE	17.2	6.5	11.9	1.6	23.4	12	-1.4	9	-4.5	1	2	12
CONNAUGHT AIRPORT	15.6	7.5	11.6		22.1	12 24	2.8	17	-2.4	1	0	3
CO. MEATH												
WARRENTOWN	17.1	7.5	12.3	2.0	23.1	23	0.9	2	-2.7	7	0	5
CO. MONAGHAN												
CLONES	17.1	7.5	12.3	2.0	23.0	12	2.2	1 7	-4.4	1	0	6
CO. OFFALY												
BIRR	17.5	6.9	12.2	1.6	23.9	12	-0.4	1	-4.9	7	1	6
DERRYGREENAGH	17.7	6.1	11.9	1.9	24.6	24	-0.7	7	-6.0	7	1	9
CO. SLIGO												
ARDTARMON	16.9	8.9	12.9		23.8	24	4.8	1	0.6	1	0	0
CO. TIPPERARY												
FETHARD (PARSONSHILL)	17.2	6.7	12.0		23.2	24	1.4	17	-2.5	7	0	6
CO. WATERFORD												
WATERFORD (TYCOR)	18.0	8.0	13.0	2.1	23.7	12	3.2	1			0	
DUNGARVAN (CARRIGLEA)	17.3	7.4	12.4	1.6	20.9	24	1.0	7	-1.5	7	0	1
CO. WESTMEATH												
MULLINGAR II	17.1	6.9	12.0	1.8	23.4	24	-1.1	7	-4.7	7	1	7
CO. WEXFORD												
JOHNSTOWN CASTLE	15.7	7.8	11.8	1.5	20.2	24	2.9	8	-1.5	8	0	1
ROSSLARE	14.4	9.2	11.8	1.2	17.8	21	5.0	17	2.6	21	0	0
CLONROCHE	16.7	7.0	11.9	1.6	22.0	24	2.0	8	-4.5	8	0	12
JOHN F. KENNEDY PARK	16.8	7.8	12.3	1.7	21.8	12	2.5	8	-2.1	8	0	1

County/ Station	Daily mean (hours/day)	% of average	% of possible	Most in a day/date
CO. CLARE				
SHANNON AIRPORT	6.43	111	41	14.5 23
CO. CORK				
CORK AIRPORT	8.27	137	53	14.7 22 23
SHERKIN ISLAND	7.99	118	51	14.5 23
BALLINCURRIG (PEAFIELD)	8.15		43	14.5 23
CO. DONEGAL				
MALIN HEAD	7.16	116	44	14.5 7 23
BALLYSHANNON (CATHLEEN'S FALL)	6.92	128	43	14.6 23
CO. DUBLIN				
DUBLIN AIRPORT	7.74	127	49	14.7 23
CASEMENT AERODROME	7.25	124	46	14.5 23
CO. GALWAY				
GALWAY (UNIV. COLL.)	6.38	110	40	14.8 23
CO. KERRY				
VALENTIA OBSERVATORY	7.22	124	46	14.5 23
ARDFERT (LISCAHANE)	7.34		47	13.8 23
CO. KILKENNY				
KILKENNY	6.85	125	43	14.0 7
CO. LEITRIM				
BALLINAMORE	6.45	130	40	14.3 23
CO. MAYO				
BELMULLET	7.50	122	47	14.8 23
STRAIDE	7.18			14.6 23
CONNAUGHT AIRPORT	6.83		43	15.0 23
CO. MONAGHAN				
CLONES	6.79	129	42	14.9 23
CO. OFFALY				
BIRR	6.01	113	38	14.0 23
CO. WATERFORD				
DUNGARVAN (CARRIGLEA)	7.58	126	47	13.3 22
CO. WESTMEATH				
MULLINGAR II	7.53	135	47	14.4 23
CO. WEXFORD				
JOHNSTOWN CASTLE	6.35	106	40	13.8 8
ROSSLARE	7.89	115	50	14.7 29
CLONROCHE	6.06	108	39	12.7 22
JOHN F. KENNEDY PARK	6.85	124	44	12.9 24

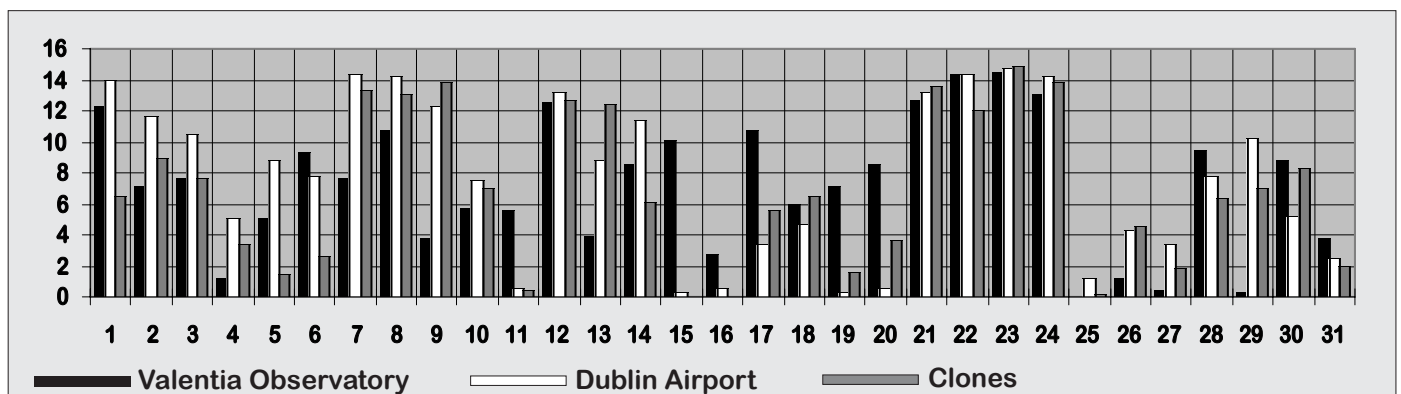
Very sunny in south

Sunshine totals were above normal everywhere, ranging from 186 hours at Birr to 256 hours at Cork Airport. Cork's total, which represents an average of 8.3 hours of sunshine per day, was the highest of any month at the station since records began there in 1962. Percentage of normal values were between 106% at Johnstown Castle and 137% at Cork Airport.

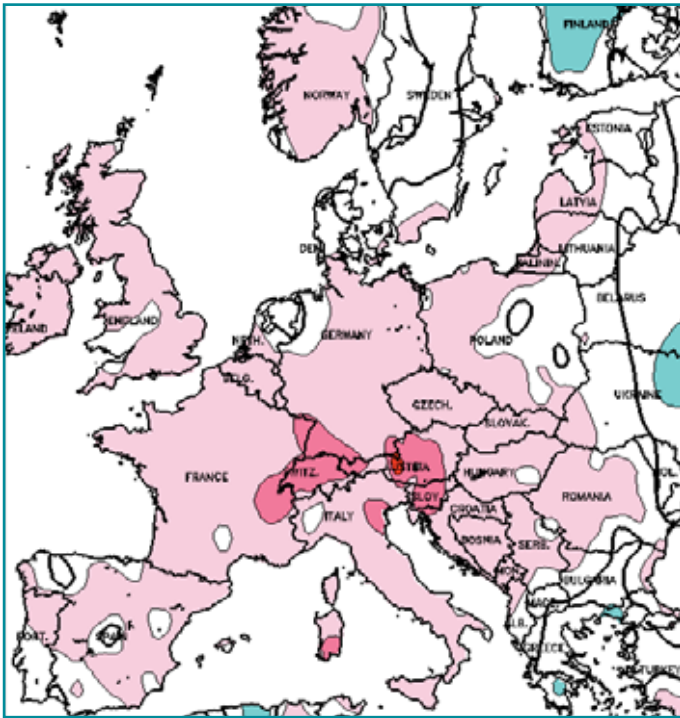
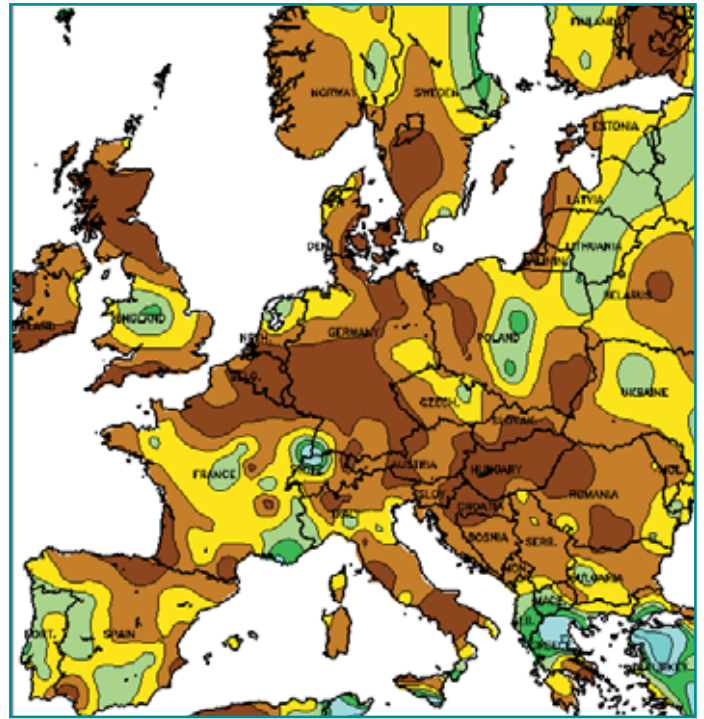
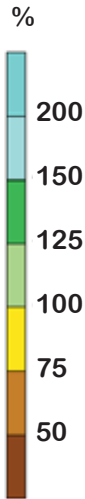
Daily sunshine values were consistently high through the month apart from the final week. Between 13 and 15 hours sunshine were measured generally between the 21st and 24th, close to the maximum possible for May. Connaught Airport measured the highest daily value, 15.0 hours on the 23rd. Global solar radiation totals were also above normal everywhere, ranging from 103% of normal at Malin Head to 119% at Belmullet.



Daily sunshine values (hours)

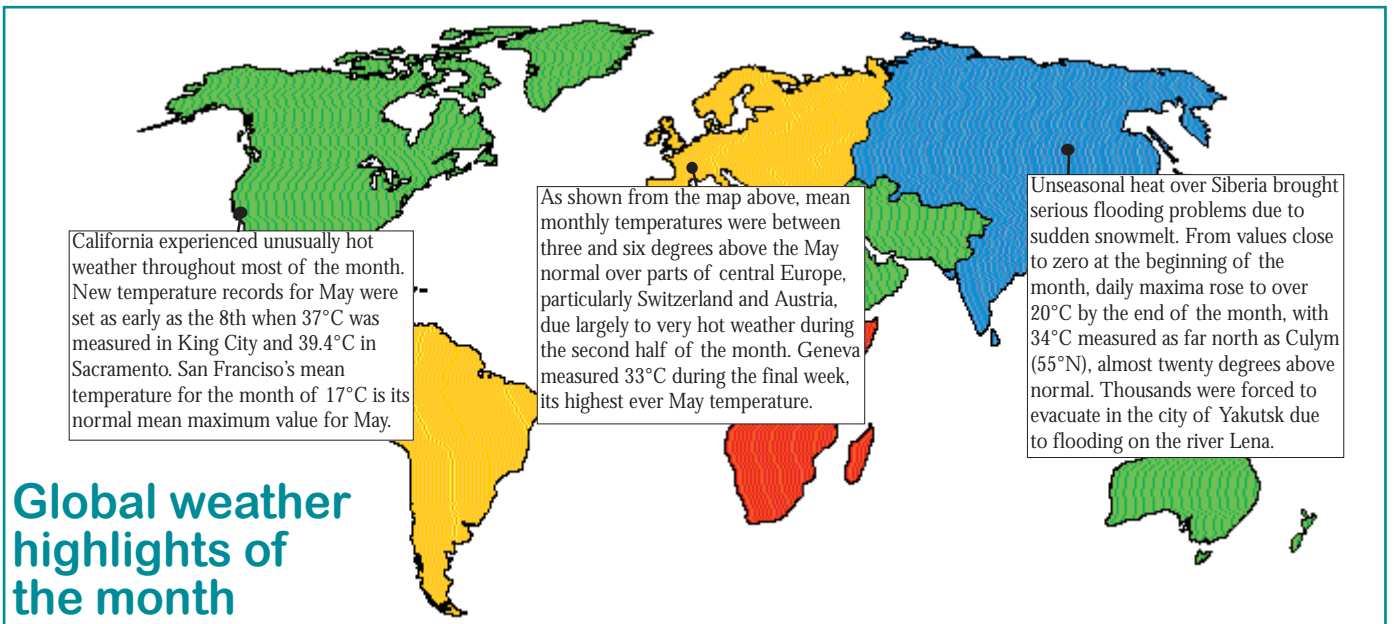


MAY RAINFALL
(Percentage of
1961-1990 normal)



MAY MEAN TEMPERATURES
(difference from
1961-1990 normal)

Data supplied by NOAA
Climate Prediction Centre,
US Department of Commerce



California experienced unusually hot weather throughout most of the month. New temperature records for May were set as early as the 8th when 37°C was measured in King City and 39.4°C in Sacramento. San Francisco's mean temperature for the month of 17°C is its normal mean maximum value for May.

As shown from the map above, mean monthly temperatures were between three and six degrees above the May normal over parts of central Europe, particularly Switzerland and Austria, due largely to very hot weather during the second half of the month. Geneva measured 33°C during the final week, its highest ever May temperature.

Unseasonal heat over Siberia brought serious flooding problems due to sudden snowmelt. From values close to zero at the beginning of the month, daily maxima rose to over 20°C by the end of the month, with 34°C measured as far north as Culym (55°N), almost twenty degrees above normal. Thousands were forced to evacuate in the city of Yakutsk due to flooding on the river Lena.

Global weather highlights of the month

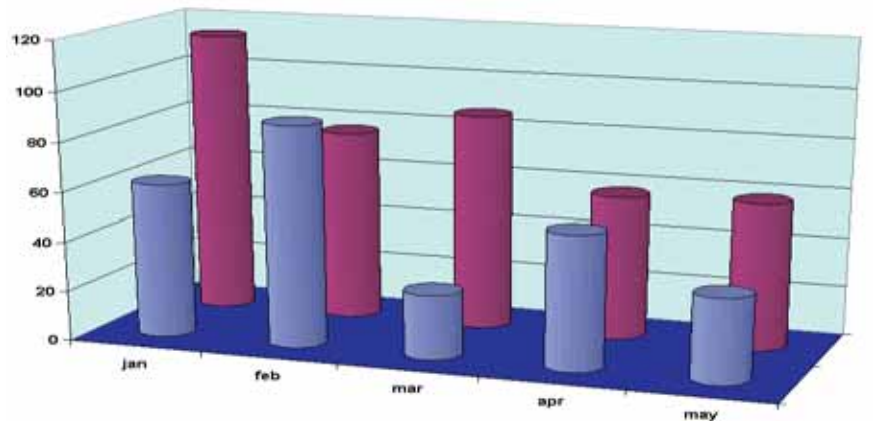
*The Weather of March, April and May***Sunnier, warmer than normal;
dry in north**

Mean temperatures for the season were between 8.0°C and 10.0°C generally, a little higher than normal at most stations. A warm May compensated for a cooler than normal March, while mean temperatures for April were close to normal. There was a very cold start to the season with all stations measuring their lowest air and ground temperatures between March 1st and 4th. During this period grass minimum temperatures fell to between -10°C and -16°C in many places, the lowest ground temperatures on record for spring at several stations. Frost was more frequent than normal during the season despite the higher than normal temperatures overall; there was a total of between 40 and 50 ground frosts at inland stations compared with the normal range for spring of 30 to 35.

Rainfall totals for the season varied widely over the country. Each of the spring months was drier than normal in the north (*see below*), but both March and April were relatively wet in the south. Sunshine totals for the season were above normal almost everywhere. Both March and May were sunny months, while April totals were close to normal. Following the sunniest winter for at least 10 years, spring totals were the highest for between 11 and 19 years generally and for over 30 years at both Kilkenny and Cork Airport. Daily sunshine values of over 14 hours were measured on a number of days during May; many stations recorded their highest spring values for between 10 and 14 years on May 23rd. Mean wind speeds for the season of between 7 and 10 knots (*8 and 12m.p.h.*) generally were below normal everywhere. Malin Head measured the highest gust of the season, 66 knots (*76m.p.h.*), on March 6th.

**Dry year so far at
Malin Head**

This chart shows monthly rainfall totals at Malin Head (blue) compared with 1961-90 normals at the station (red). Apart from a slightly wetter than average February, other months have been much drier than normal. The yearly total so far at the station of 266mm is the lowest for the 5-month period since 1964.



County/ Station	RAINFALL (mm)			TEMPERATURE (°C)			SUNSHINE (HOURS)			NO. OF DAYS WITH:						
	Total	% of average	Most in a day amount date(s)	Mean	diff. from average	Extremes Highest Lowest	Daily mean	% of average	most in a day amount date(s)	Rain	Snow	Air frost	Hail	Thunder	Fog	Gale gusts
CO. CLARE SHANNON AIRPORT	206.9	116	15.7 8 Apr	9.9	+0.9	24.0 -5.4	4.93	102	14.5 23 May	53	0	6	2	0	6	11
CO. CORK CORK AIRPORT	209.6	84	27.5 6 Mar	9.0	+1.1	21.0 -4.0	5.81	118	14.7 22 May	56	0	5	2	0	35	22
CO. DONEGAL MALIN HEAD	118.4	64	12.4 29 Apr	8.2	+0.4	22.3 -2.5	5.42	112	14.5 7 May	54	2	4	6	0	2	37
CO. DUBLIN DUBLIN AIRPORT	183.9		18.8 16 May	8.1		22.2 -7.9	5.52	108	14.7 23 May	59	3	15	4	0	9	17
CASEMENT AERODROME CO. KERRY	144.1	94	19.5 16 May	8.2	+0.5	21.8 -9.0	5.31	114	14.5 23 May	49	4	14	4	0	3	14
VALENTIA OBSERVATORY CO. KILKENNY	284.0	102	35.0 6 Mar	9.4	+0.1	23.2 -4.0	5.15	106	14.5 23 May	63	0	4	3	0	2	19
KILKENNY CO. MAYO	192.2	109	19.4 26 Mar	8.8	+0.6	23.2 -7.4	5.15	112	14.0 7 May	53		11				5
BELMULLET CONNAUGHT AIRPORT	178.3	86	10.7 5 Apr	9.1	+0.6	23.1 -4.8	5.09	99	14.8 23 May	62	5	3	12	0	4	28
CO. MONAGHAN CLONES	209.4		15.3 15 May	7.6		22.1 -3.8	4.73		15.0 23 May	71	6	11	4	0	36	21
CO. OFFALY BIRR	194.9	108	15.3 15 May	8.3	+0.5	23.0 -5.4	5.09	115	14.9 23 May	60		14				10
CO. WESTMEATH MULLINGAR II	191.7	112	14.5 5 Apr	8.6	+0.4	23.9 -7.8	4.40	95	14.0 23 May	55		14				8
CO. WEXFORD ROSSLARE	200.6	107	17.2 11 Mar	8.2	+0.2	23.4 -8.0	5.33	113	14.4 23 May	55		15				5
	185.6	104	18.6 21 Mar	9.1	+0.5	17.8 -0.7	5.78	104	14.7 29 May	50	1	2	2	0	21	23